



# ALBACON II

34th ANNUAL UK. SCIENCE-FICTION CONVENTION 1st-4th APRIL 1983

# BID REPORT 2

This is the second Bid Report for Albacon II, intended to be the 1983 national UK Easter Science-Fiction Convention. Albacon II will stretch across the four days from 1 to 4 April 1983, and may even expand into the Thursday preceding and Tuesday following the Easter Holiday.

Site for Albacon II is Glasgow's Central Station Hotel, a location characterised by four-star luxury and vast conference facilities. The Bidding Committee for Albacon II are keen to create an Eastercon which will cater to all branches of SF fandom, and intend to work hard and seek aid and advice from all quarters in order to meet their goals.

### Hotel Prices

Bedroom rates at the Central Hotel have been renegotiated and are now substantially lower than those quoted in our first Bid Report. Reductions across the board have been of the order of £5.00, and more in some cases. For example, a Single with Bathroom has been reduced to £15.00 (previously £20.00) per night.

Hotel bedroom rates include VAT, Service, and Full English Breakfast (not just Continental). Naturally, should the VAT rate be adjusted then these prices may be modified. A non-refundable deposit of £5.00 will be required with bookings.

### Room Rates are:

Single room with bathroom/shower	£15.00	Double Room with bathroom	£12.50 each
without bathroom	£12.50	without bathroom	£10.00 each
Twin Room with bathroom	£12.50 each		
without bathroom	£10.00 each	Triple Room without bathroom	£9.00 each

These rates offer remarkable value in a four star hotel; normal single room prices are £34.00 and our quotes for 1983 are actually lower than the figures agreed for Faircon '82 at the same hotel!



## Hotel facilities

The Central Hotel is a hotel in the grand style, with magnificent and roomy function halls located on two adjacent floors. Built 99 years ago, it is a solid yellow sandstone building capable of surviving the most determined assaults of SF fans. It boasts a number of interesting architectural features, including the unusual curved Court Lounge with its domed ceiling.

The hotel staff will, by the time of Albacon II, be well-used to the needs of SF fans, having hosted the 1982 Faircon in July this year. Any teething troubles will be discovered at Faircon and rectified before Albacon II takes place.

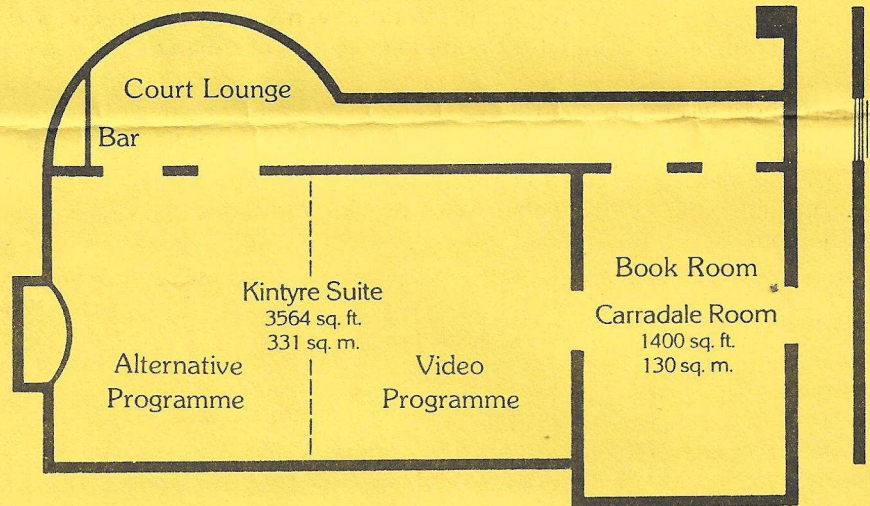
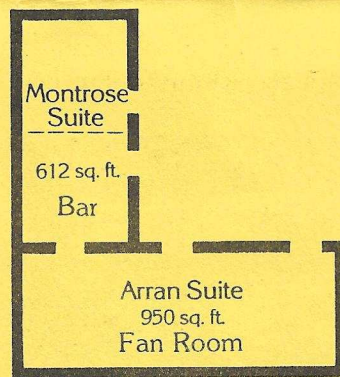
An added bonus with regard to the Central lies in the recently-revealed fact that both the General Manager and Banqueting Manager were on the staff of the hotel which hosted Tynescon in 1974, and remember that Eastercon well. They have both indicated their pleasure at the prospect of another UK Convention at their hotel, and are already familiar with the requirements of an Eastercon.

Function rooms are excellent both in terms of size and number. With four rooms capable of seating up to 600 people, three smaller function rooms in the 35-50 seat range, and a host of smaller rooms, there isn't the slightest possibility of running out of space. Accommodation is listed in the table below, and reveals that over 1400 people can be housed at one time. Our major Convention Hall seats 600, and is attended by spacious foyer areas.

Day Accommodation	Conference capacity	
Banqueting Hall	102' x 45'	600
Kintyre Suite	81' x 44'	450
Carradale Room	50' x 28'	140
Clydesdale Room	28' x 21'	50
Douglas Room	18' x 18'	50
Montrose Suite	36' x 17'	35
Arran Suite	50' x 19'	100

### Night Accommodation

211 bedrooms	Singles	Doubles/Twins
303 beds	123	81



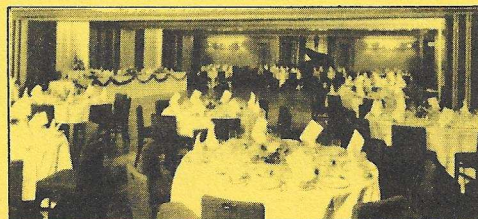
## Bar Prices and Policy

The Central Hotel will provide at least two Bars purely for the use of Albacon II Members. One of these will be situated immediately outside the Fan Room. The hotel management have indicated their willingness to provide real ale in at least one Bar if at all possible. Beer, spirits, and soft drinks prices are still under negotiation. The *current* tariff shows prices for private functions such as 62p per pint for McEwans Heavy, and 66p for Lager. Whisky costs 72p per fifth gill measure, and Coke 30p per bottle.

Late licences will be applied for by the hotel, and no difficulty is envisaged here. Sunday afternoon bar-opening will occur. The Hotel are, in essence, agreeable to keeping a Bar open so long as there are customers, and have been warned of the volume of trade to be expected!

## Banquet and eating places

A Banquet will be held at Albacon II, where the traditional Eastercon presentations and speeches will be made. Price for the Banquet will be £8.00, and this sum includes Service and VAT. A representative menu is given opposite.



- Brussels Paté with Salad
- Roast Loin of Pork in a Pastry
- Cream of Cider Sauce
- Buttered Broccoli
- Fondant Potatoes
- Peach Cardinal
- Coffee and Mints



Veterans of the Albacon 80 Banquet will be pleased to know that there will be no haggis, piper, or dancers! A vegetarian meal will be available on request.

As well as the Banquet, the hotel will operate a fast-food service with a limited selection at reasonable rates. In addition, the Malmaison Restaurant offers excellent meals at good prices.

Literally dozens of eating places are to be found within five minutes walk from the railway station, and these offer all the selection one might possibly want in terms of both price and quality. For those who prefer not to eat food, there is a 24 hour British Rail buffet within the confines of Central Station.

### **Publications**

Albacon II will publish three Progress Reports in July, November, and February. Each will be photo-typeset, and to the same standard as this Bid Report. We will utilise an A5 format (like the Channelcon PRs) and produce 12 pages containing around 5,000 words of text in each PR.

We will publish an attractive Programme Book, and may produce other publications too. One such may well be a Bibliography of our Guest of Honour.

We will produce a report on Albacon II for distribution after the Convention, and this will contain a full financial report.

Our publications will be open to contributions from all, and will seek to provide a forum for debate and ideas from fandom at large (much as the Faircon PRs do already).

### **Travel**

Forming part of the Central Station concourse, the Central Hotel must be the easiest hotel to reach that could be thought of. Main-line rail links to Glasgow terminate at Central Station, while east coast trains arrive at nearby Queen Street station, minutes walk or a brief bus link ride away. Road travel to Glasgow is straightforward, with easy access from all parts of the country. Glasgow Airport is a major UK airport, while continental access is possible via Prestwick Airport.

We will approach British Rail and arrange a cheap fares deal. This will typically involve a reduction of one-third from normal rates. Other cheap rail offers abound, and are equally good value.

### **Programme**

Albacon II will offer a full programme of talks, panel discussions, films and video. We will provide a Main Programme, Alternative Programme, Fan Room Programme, Wide-screen Video Programme, and much else besides. We will have a large Art Show, Book Room, and a Computer Room, and will use our many smaller rooms to cater for minority interests.

We will include a Fancy Dress Competition where there will be strict control of weaponry, and a Vogon Poetry Competition where there will be no control of extremely dangerous poems.

Some Programmes will run on a more-or-less 24 hours a day basis; others will be more limited.

In general, we will give you a wide choice of different Programmes, and try to cater to as many tastes as possible. From hardened fanzine-fan to the merest neofan we will provide amusement and interest, and will actively seek contributions from all branches of fandom.

### **The Committee**



Composed of veterans from past organising Committees for the Faircons and other Conventions, as well as fresh faces, the Committee includes (in alphabetical order):

Robert Aitchison (Art Show), John Allardice (Films), Jim Barker (Fan Room), Henry Balen, Neil Craig (Book Room), Iain Dickson, Lilian Edwards, Dave Ellis (Programme), Dave Hutton (Production), Bob Jewett, Chris O'Kane, Doug McCallum (Membership), Mike Molloy (Art Show), Frances-Jane Nelson (Hotel), Joan Paterson, Bruce Saville (Films), Bob Shaw (Production), and Ian Sorensen (Treasurer).

Offers of aid and assistance in addition to the above-named Committee have already been made by a number of individuals, and YOUR help will be more than welcome.

### **Guests**

Two Professional Author Guests have indicated willingness to attend Albacon II. They will be announced after we win, but are extremely worthwhile individuals who will without any doubt add much to our Convention.

In addition to our main Guests we will offer the 1983 TAFF Winner the position of Fan Guest of Honour, and aid him with expenses and other costs not met by TAFF itself.

### **Financial Policy**

The Committee of Albacon II will NOT have their Hotel Rooms etc paid out of Convention funds. This position, similar to that announced before every other Glasgow Con, will be rigidly adhered to. We will endeavour to keep costs as low as possible, and will consult our Members before disposing of any profit. First choice for any disbursement of excess cash would normally be the following Eastercon, subject to approval by the Business Meeting.

We will include a Business Meeting during Albacon II in addition to any Bidding Session, and invite comment and criticism from all sources. We will publish accounts as soon as possible after Albacon II.



## Membership

A list of Membership Rates is given below. We want as many folk as possible to sign up in order to show support for our Bid! Pre-Supporting Membership costs you £1.00, and will be deducted from the eventual rate for Supporting/Full Membership after we win the Bid. If we fail, and have cash left over, we'll do something suitable with it (and publish an account of our spending). Pre-Supporting Members will have a first Progress Report sent to them but no others unless they take out Supporting or Full Membership.

Albacon II will operate a staggered scale for Memberships:

*Full Membership*  
to 1 July 1982 £7.00  
to 1 December 1982 £8.00  
to 1 February 1983 £9.00  
At the door rate will be £10.00

*Supporting Membership*  
to 1 July 1982 £3.00  
to 1 December 1982 £4.00  
to 1 February 1983 £5.00  
Balance to Full from Supporting is always £4.00

*Day Memberships* will cost £5.00 per day (convertible to Full on payment of a total of £10.00)

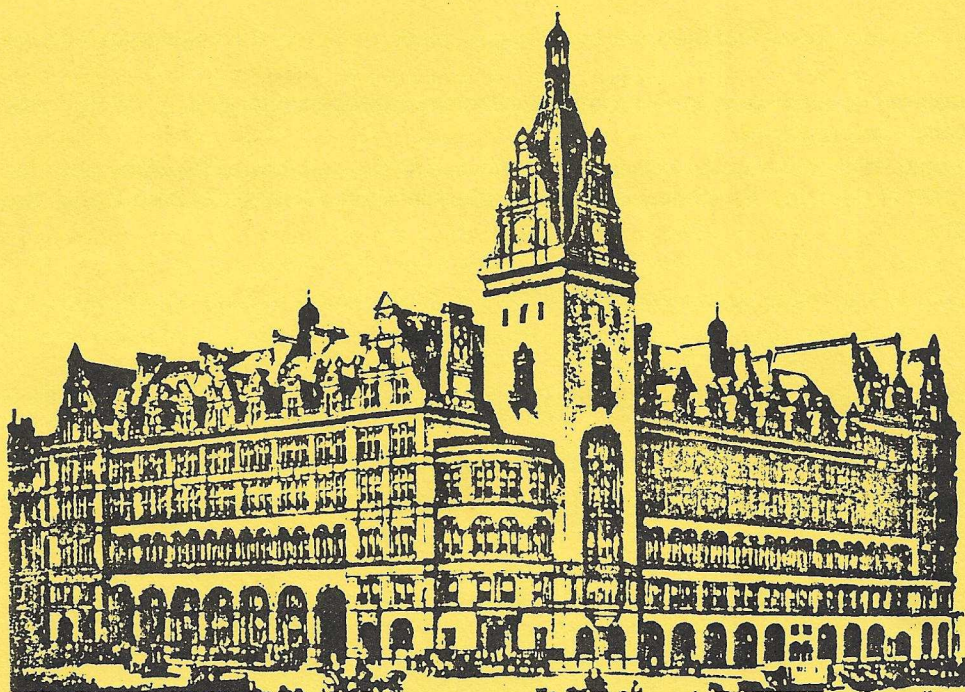
Our mailings will be controlled by computer, resulting in a more accurate and readable address on each envelope, and each Albacon II Member will be sent a printed statement with their final Progress Report detailing amounts paid etc. etc. This whole system will be put into use at Faircon '82, and so we will have a proven and, we trust, bug-free method of getting everything to you. If there is an error on your mailing label then write to us with your full address as it should be.

All Cheques, POs etc (NO CASH, PLEASE) should be sent to Albacon II at the address below. All remittances should be made payable to Albacon. If you require a receipt then say so and enclose an SAE.

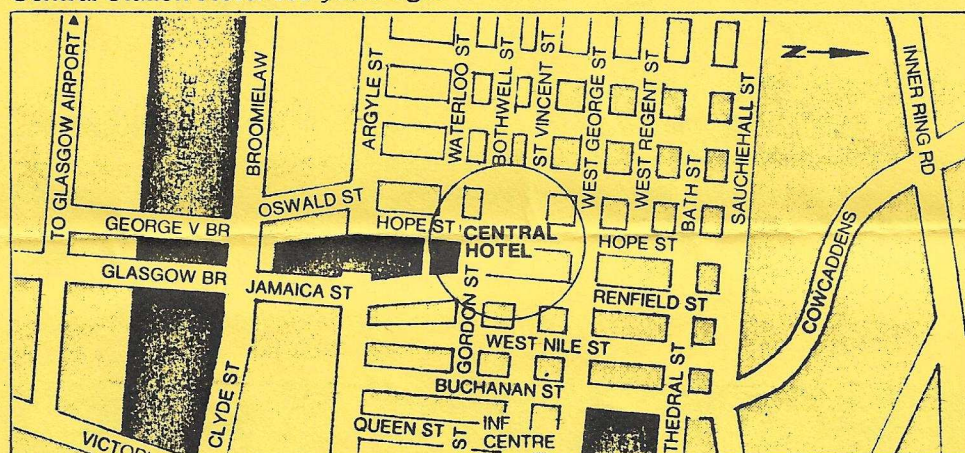
All Albacon mail should be addressed to:

ALBACON II  
c/o 1/R 39 Partickhill Road  
Glasgow G11 5BY

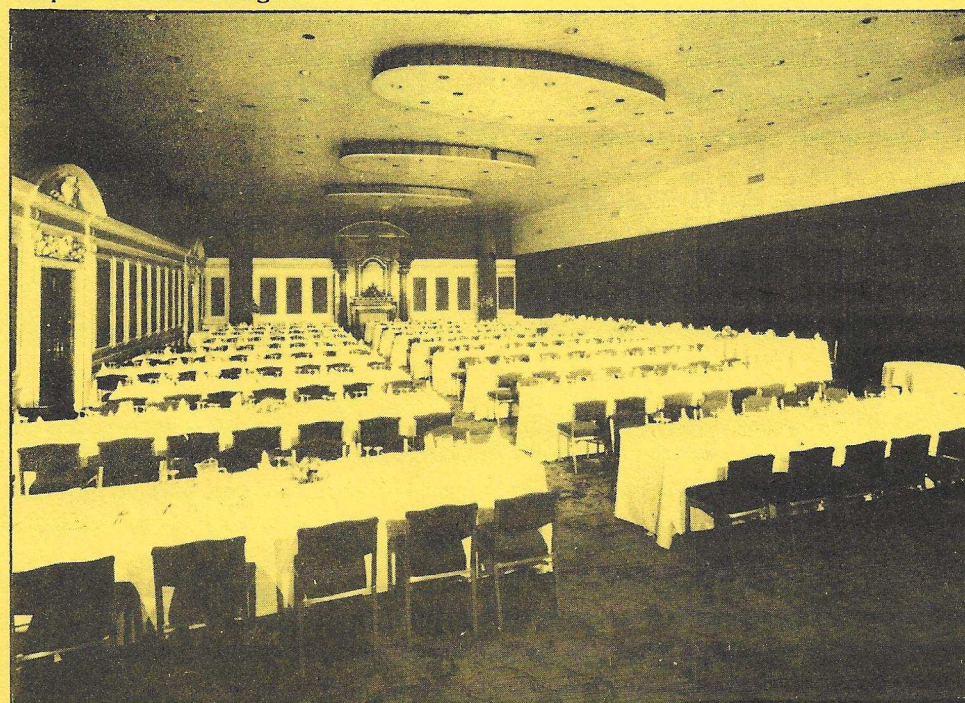
You may telephone BOB SHAW on (041) 334 6874 if you have any other urgent query (beware of the answering machine).



Central Station Hotel 100 years ago.



Map of Central Glasgow



Main Con Hall