

# ODYSSEY 2010



POCKET PROGRAMME

THE 61ST BRITISH NATIONAL  
SCIENCE FICTION CONVENTION  
RADISSON EDWARDIAN HEATHROW

2 - 5 APRIL 2010

## THURSDAY 8AM-5PM

|      | Common-wealth | Connaught | Room 12 | Royal C+D                          | Room 41 | Room 40 |
|------|---------------|-----------|---------|------------------------------------|---------|---------|
| 8am  |               |           |         |                                    |         |         |
| 9am  |               |           |         |                                    |         |         |
| 10am |               |           |         |                                    |         |         |
| 11am |               |           |         |                                    |         |         |
| 12pm |               |           |         |                                    |         |         |
| 1pm  |               |           |         |                                    |         |         |
| 2pm  |               |           |         | Ikea<br>Workshop<br>(finishes 6pm) |         |         |
| 3pm  |               |           |         |                                    |         |         |
| 4pm  |               |           |         |                                    |         |         |

**THURSDAY 8AM-5PM**

| Room 42 | Room 18 | Room 19 | Newbury 1 | Others | Others |      |
|---------|---------|---------|-----------|--------|--------|------|
|         |         |         |           |        |        | 8am  |
|         |         |         |           |        |        | 9am  |
|         |         |         |           |        |        | 10am |
|         |         |         |           |        |        | 11am |
|         |         |         |           |        |        | 12pm |
|         |         |         |           |        |        | 1pm  |
|         |         |         |           |        |        | 2pm  |
|         |         |         |           |        |        | 3pm  |
|         |         |         |           |        |        | 4pm  |

**THURSDAY 5PM-2AM**

|             | <b>Common-wealth</b> | <b>Connaught</b> | <b>Room 12</b> | <b>Royal C+D</b>           | <b>Room 41</b> | <b>Room 40</b> |
|-------------|----------------------|------------------|----------------|----------------------------|----------------|----------------|
| <b>5pm</b>  |                      |                  |                | Ikea Workshop (starts 2pm) |                |                |
| <b>6pm</b>  |                      |                  |                |                            |                |                |
| <b>7pm</b>  |                      |                  |                |                            |                |                |
| <b>8pm</b>  |                      |                  |                |                            |                |                |
| <b>9pm</b>  |                      |                  |                |                            |                |                |
| <b>10pm</b> |                      |                  |                |                            |                |                |
| <b>11pm</b> |                      |                  |                |                            |                |                |
| <b>12am</b> |                      |                  |                |                            |                |                |
| <b>1am</b>  |                      |                  |                |                            |                |                |

**THURSDAY 5PM-2AM**

| Room 42 | Room 18 | Room 19 | Newbury 1 | Others   | Others                                 |      |
|---------|---------|---------|-----------|--|--|------|
|         |         |         |           |  |  | 5pm  |
|         |         |         |           | Room 37:<br>Newsletter<br>Recruitment<br>and Teaching<br>Session |  | 6pm  |
|         |         |         |           |  | Newbury 2:<br>Thursday<br>Evening Meal | 7pm  |
|         |         |         |           |  |  | 8pm  |
|         |         |         |           |  | Newbury 2:<br>Pub Quiz                 | 9pm  |
|         |         |         |           |  | Newbury 2:<br>Volunteers'<br>Meeting   | 10pm |
|         |         |         |           |  |  | 11pm |
|         |         |         |           |  |  | 12am |
|         |         |         |           |  |  | 1am  |

| FRIDAY 8AM-5PM |   |   |   |   |   |  |
|----------------|---|---|---|---|---|--|
|                | Common-wealth   | Connaught   | Room 12   | Royal C+D   | Room 41   | Room 40  |
| 8am            |   |   |   |   |   |  |
| 9am            |   | Were Fans Bullied at School?                            |   | Tai Chi   |   |  |
| 10am           |   | Life of a Hydrogen Atom                                 |   | North West Morris Dancing for Beginners                       |   |  |
| 11am           |   | Comics 101 - Essential Comics for New Readers           | Kate Bush as a Fantasy Author                                 |   | Terry Pratchett - Time Travel and Alternative History | Conversational German                                    |
| 12pm           |   | Book Collections - How Do You Store/Index Your Library? | Animatronics - Artificial Intelligence?                       | Craft: Create Your Own Egg Character                          | Homer's Odyssey - The World's First Fantasy Novel     |  |
| 1pm            |   | Master of the Universe Quiz                             | Iain Banks Before The Wasp Factory                            |   | European Fandom Today                                 |  |
| 2pm            |   |   | The English in the Marvelverse                                | Live Action Video Game Charades                               |   | Allergies - an Introduction to Our Current Understanding |
| 3pm            |   | Writing Steampunk                                       | Censorship - Should Parents Control What Their Children Read? | Ceilidh Workshop  | Alien Archeology                                      |  |
| 4pm            | Utopia - How the Concept Has Developed in Philosophy and SF | Arthur and Merlin - Where Do the Legends Originate?     | SF - Taking Shows From TV to Audio                            | Hitchiker Games - Towel Origami, Disaster Area Sun-Dive Tour! | Is the New Trek a Trekkie's Trek?                     |  |

**FRIDAY 8AM-5PM**

| Room 42              | Room 18                               | Room 19   | Newbury 1               | Others   | Others   |             |
|----------------------|---------------------------------------|---|-------------------------|--|--|-------------|
|                      |                                       | Crafts After Breakfast - Clangers and Lightsabers | Breakfast (starts 7am)  |  |  | <b>8am</b>  |
|                      |                                       |   |                         | Room 31: I Want to Help and I Don't Know Where to Go               |  | <b>9am</b>  |
|                      |                                       |   |                         |  |  | <b>10am</b> |
|                      |                                       |   |                         |  |  | <b>11am</b> |
|                      |                                       |   | Convention Buffet Lunch |  |  | <b>11am</b> |
| What are we showing? |                                       |   |                         |  |  | <b>12pm</b> |
|                      |                                       |   |                         |  |  | <b>1pm</b>  |
|                      |                                       |   |                         |  |  | <b>2pm</b>  |
| Naming Pluto         |                                       | Choral Workshop - Green Hills of Earth            |                         | Room 17: Crisis Management Team Game - First Group of Participants | Newbury 2: Battlestar Atlantia - Rules, Registration, etc. | <b>3pm</b>  |
|                      | Robot Workshop (Beyond Cyberdrome 3D) |   |                         |  | Room 30: Masquerade and Cabaret Sign-Up                    | <b>4pm</b>  |

| FRIDAY 5PM-2AM |  |  |   |  |                                    |  |
|----------------|--|--|---|--|------------------------------------|--|
|                | Common-wealth                                      | Connaught  | Room 12   | Royal C+D  | Room 41                            | Room 40  |
| 5pm            | How Writers, Artists and Illustrators Interact     | Farmville - the Social Dynamics of Online Games    | BSFA Survey of British SF Writers - the Conclusions | Multi Dimensional Swap Shop - Comics, DVDs, Games, etc.          | How to Be a Panellist or Moderator | UK vs. US TV - Which Side of the Pond Makes Better Television? |
| 6pm            | Universal Soldier: Regeneration - UK Film Premiere | Arthur and Merlin - Modern Interpretations         | Writing Video Games                                 | NewCon Press and Constable & Robinson Book Launch                | First-Timers' Meeting              | Tech and the Masquerade - What is Possible / Impossible?       |
| 7pm            |  | Patent Your Flying Saucer!                         | Podcasts - Science Fiction and SF News              | Kids' Science Lab - Catapults, Spinners and Identifying Objects! | Gender in Space Opera              |  |
| 8pm            | Opening Ceremony                                   |  |   |  |                                    |  |
| 9pm            |  | Alternative Sexualities in SF Literature and Media | Disability and Villains                             | Filking - an Introduction - All Singers / Listeners Welcome      | Volunteers' Meeting                | Rope Bondage Workshop - Basic Techniques                       |
|                | 9:30pm - Ceilidh                                   |  |   |  |                                    |  |
| 10pm           |  | Blake's 7 Drinking Game                            | It's Sh*t But We Like It - Crap TV and Film         | Dr. Horrible's Sing-Along Blog                                   | Physics of BDSM                    | 10:30pm - Filk Session   |
| 11pm           |  |  |   | La Menace Vient De L'Espace - Film                               |                                    |  |
| 12am           |  |  |   |  |                                    |  |
| 1am            |  |  |   |  |                                    |  |



**FRIDAY 5PM-2AM**

| Room 42 | Room 18 | Room 19 | Newbury 1                    | Others  | Others |      |
|---------|---------|---------|------------------------------|---|--------|------|
|         |         |         |                              |   |        | 5pm  |
|         |         |         | Convention<br>Buffet Meal    | Henleys<br>Drawing<br>Room: Poly<br>Social<br>Gathering |        | 6pm  |
|         |         |         |                              | Room 38: Art<br>Show Launch<br>- Meet the<br>Artists    |        | 7pm  |
|         |         |         |                              |   |        | 8pm  |
|         |         |         | Worldcon Bid<br>Launch Party | Newbury 2:<br>Battlestar<br>Atlantia -<br>Introduction  |        | 9pm  |
|         |         |         |                              |   |        | 10pm |
|         |         |         |                              |   |        | 11pm |
|         |         |         |                              |   |        | 12am |
|         |         |         |                              |   |        | 1am  |

## SATURDAY 8AM-5PM

|      | Commonwealth   | Connaught  | Room 12   | Royal C+D   | Room 41   | Room 40  |
|------|--|--|---|---|---|--|
| 8am  |  |  |   |   |   |  |
| 9am  | Quarterstaff Workshop  | Living Forever - Is it a Good Thing?                         | Red Dragons and Atomic Lorries: Early Welsh-Language SF     | Tai Chi   | Female Superheroes - Why Aren't There More of Them? | 9:30am - Feedback  |
|      |  |  |   |   |   |  |
| 10am | Guest of Honour Interview: Carlos Ezquerro                       | Worldcon 2014 and Eurocon 2014 - Should They Combine?        | Quantum Computing for Beginners                             | Lindy Hop Dance Workshop  |   |  |
| 11am | Guest of Honour Interview: Iain M. Banks                         | Non-SF for SF Fans   | Watchmen Motion Comics                                      | Circus Skills Workshop for Kids                                 |   | European SF Society - Where Is it Heading?                   |
| 12pm | Bad Science - Ben Goldacre                                       | Worldcon 2014 - Question and Answer Session                  | Watchmen - Was the Movie Worth It?                          |   |   |  |
| 1pm  | Geoengineering - George Hay Lecture - Sponsored by SF Foundation | Comic Songs: Exploring the Genre                             | 2000 AD and its Influence (If Carlos Ezquerro is Available) |   | LabLit - Fiction Set In the Laboratory              | Costume - Performance and Presentation                       |
| 2pm  | Fantastic SF and Fantasy Make-Up Techniques                      | Writers and the Web - Blogs, Facebook, Twitter, Amazon, etc. | Boobs and Biceps - Gender Exaggeration in Comic Art         | Evolution of Board Games  | Writing in English as a Foreign Language            | Dalek Catering - Make Your Own Dalek Cake - All Ages Welcome |
| 3pm  | Masquerade and Cabaret Set-Up and Rehearsal (finishes 6pm)       | Bridging the Gap - SF/F and Social Media                     | Fan Guest of Honour Interview                               | Swordplay for Writers   | Science and the Media - Accuracy of Reporting?      |  |
| 4pm  |  | Geoengineering - A Broader Perspective                       | Whisky Tasting with Iain Banks (finishes 6pm)               | Bartitsu: Victorian Self-Defence with Overcoat, Wig and Parasol | E-Books - Reading and Publishing                    | Do You Worship Cthulhu? - Game                               |

**SATURDAY 8AM-5PM**

| Room 42 | Room 18                               | Room 19   | Newbury 1               | Others   | Others  |   |             |
|---------|---------------------------------------|---|-------------------------|--|---|---|-------------|
|         |                                       | Crafts After Breakfast - Clangers and Lightsabers | Breakfast (starts 7am)  |  |   | <b>8am</b>                                |             |
|         | Robot Workshop (Beyond Cyberdrome 3D) |   |                         |  |   |   | <b>9am</b>  |
|         |                                       | Chinese Poetry - Do it Yourself Translation       |                         |  | Room 17: Crisis Management Team Game - Second Group of Participants |   | <b>10am</b> |
|         |                                       | Choral Workshop - Green Hills of Earth            | Convention Buffet Lunch |  | Room 30: Masquerade and Cabaret Sign-Up                             | <b>11am</b>                               |             |
|         |                                       |   |                         |  | Hotel Lobby: Open Autograph Session                                 | Henleys Drawing Room: Beeblebears' Picnic | <b>12pm</b> |
|         |                                       |   |                         |  | Hotel Lobby: Open Autograph Session                                 |   | <b>1pm</b>  |
|         | Kaffeeklatsch - Liz Williams          | Writers' Workshop (finishes 6pm)                  |                         | Newbury 2: Battlestar Atlantia                     |   | <b>2pm</b>                                |             |
|         | Drawing Comic Art                     |   |                         | Newbury 2: Battlestar Atlantia - Cabaret Challenge |   | <b>3pm</b>                                |             |
|         | Write a Doctor Who Song               |   |                         |  |   |   | <b>4pm</b>  |

**Ops**

Ops is the place to go if you need help with any convention-related problems.



The accessible toilets on the ground floor are meant for those who genuinely need them. Newbury 1 can be accessed via the ramp in the Brasserie. Newbury 2 is unfortunately not wheelchair accessible.

The lifts behind the County Suite/Royal A are larger and therefore better suited for scooters than those near the Brasserie/Connaught.

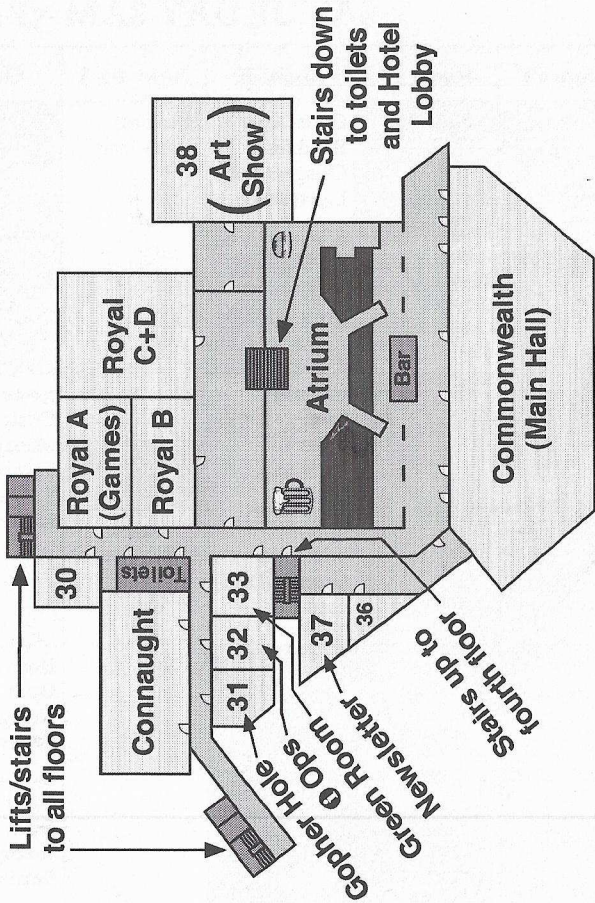


Real Ale is sold in the Atrium. Drinks are also available from Henleys Bar in the evening, and the Polo Bar (not at con prices).

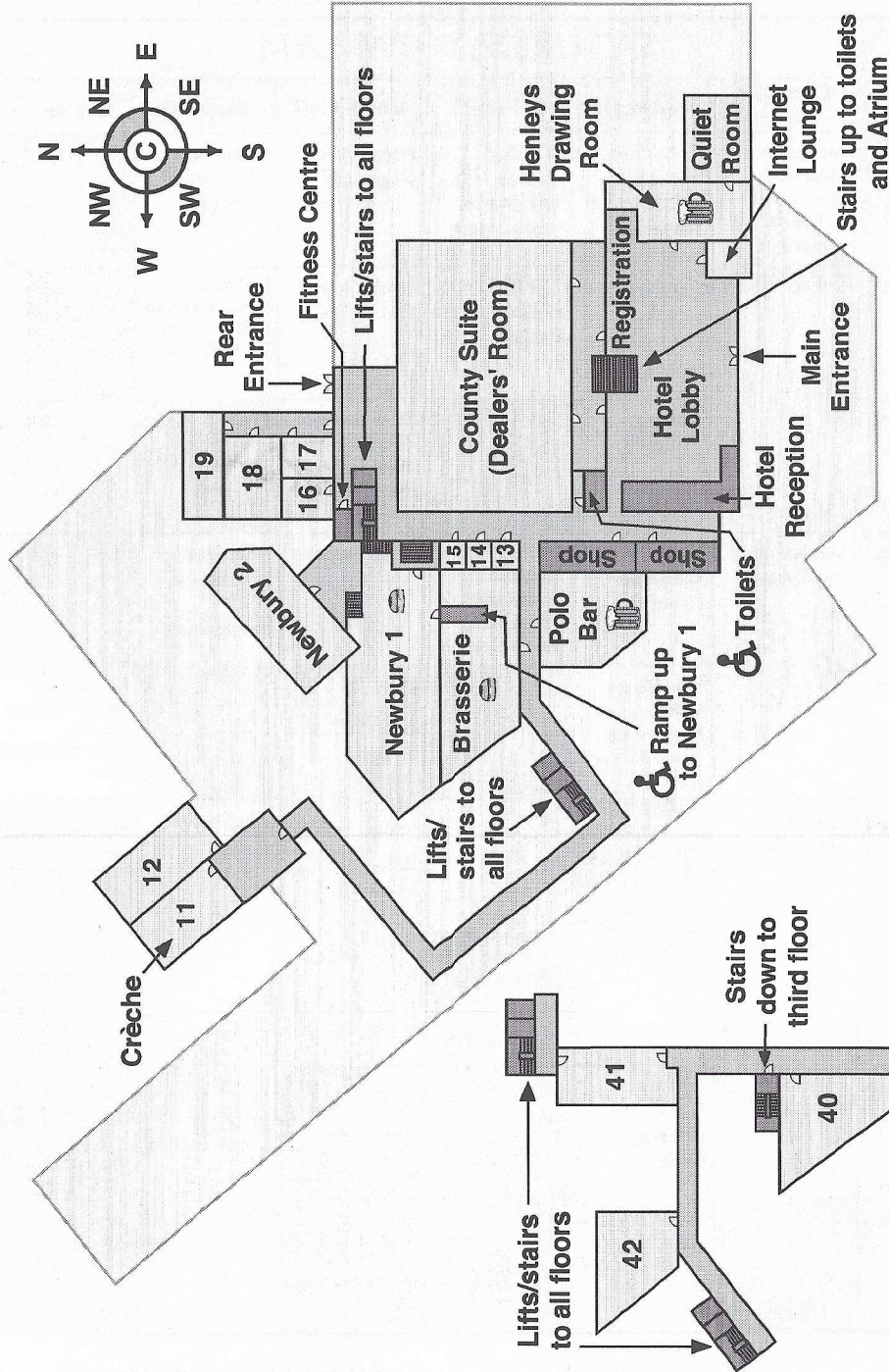
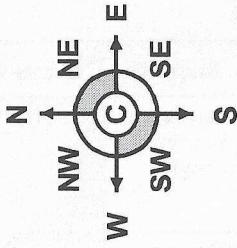


Breakfast is served in the Brasserie and Newbury 1&2. The lunch and dinner buffet meals are served in Newbury 1. The Brasserie opens as a restaurant in the evening. Bar food is sold in the Atrium and Newbury 1.

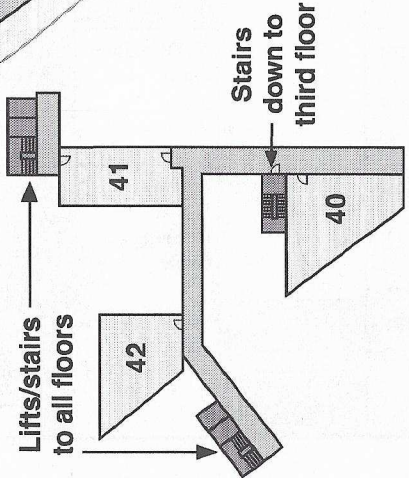
|    |     |    |          |     |    |               |     |    |     |    |
|----|-----|----|----------|-----|----|---------------|-----|----|-----|----|
| 11 | Gnd | NW | 31       | 3rd | W  | Atrium        | 3rd | C  | Gnd | S  |
| 12 | Gnd | NW | 32       | 3rd | W  | Brasserie     | Gnd | W  | Gnd | NW |
| 13 | Gnd | C  | 33       | 3rd | W  | Commonwealth  | 3rd | S  | Gnd | NW |
| 14 | Gnd | C  | 36       | 3rd | W  | Connaught     | 3rd | NW | 3rd | W  |
| 15 | Gnd | C  | 37       | 3rd | W  | County Suite  | Gnd | C  | 3rd | W  |
| 16 | Gnd | N  | 38       | 3rd | E  | Dealers' Room | Gnd | C  | Gnd | W  |
| 17 | Gnd | N  | 40       | 4th | S  | Games Room    | 3rd | N  | Gnd | SE |
| 18 | Gnd | N  | 41       | 4th | N  | Gopher Hole   | 3rd | W  | Gnd | S  |
| 19 | Gnd | N  | 42       | 4th | NW | Green Room    | 3rd | W  | 3rd | N  |
| 30 | 3rd | NW | Art Show | 3rd | E  | Henleys       | Gnd | SE | 3rd | N  |



# Third Floor



# Ground Floor



# Fourth Floor

## SATURDAY 5PM-2AM

|      | Common-wealth  | Connaught   | Room 12   | Royal C+D                              | Room 41   | Room 40  |
|------|--|---|---|--|---|--|
| 5pm  | Masquerade and Cabaret Set-Up and Rehearsal (starts 3pm) | Tales From the White Hart - Scientific Tall Stories | Whisky Tasting with Iain Banks (starts 4pm)               | Juggling for Beginners                 | Steampunk - Literature or Lifestyle?                            |  |
| 6pm  | Doctor Who   |   | The Occult in Modern Urban Fantasy                        | Book Launch Party - 'Shine'            | European SF - Which European Writers Should We Be Reading?      |  |
| 7pm  |  |   | Reading Critically  |  | Sci-Fi London Film Festival - Short Film Preview, First Showing |  |
| 8pm  | Masquerade and Cabaret                                   | Non-Euclidean Geometry                              | Doctor Who - Informal Discussion About the Easter Special | TAFF Report                            | American Remakes of UK TV Programmes                            |  |
| 9pm  |  | Small Press Comics and Webcomics                    |   | 9:30pm - Auction - League of Fan Funds |   | BDSM Talk - Safety, Informed Consent, Safewords, Toys, Ideas |
| 10pm | Disco - New Romantics                                    |   | QI  |  |   | Filk Session   |
| 11pm |  | Ye Olde Slash Panel                                 |   |  |   |  |
| 12am |  | Primeval Denial Drinking Game                       |   |  |   |  |
| 1am  |  |   |   |  |   |  |

**SATURDAY 5PM-2AM**

| Room 42   | Room 18           | Room 19                        | Newbury 1              | Others                         | Others |      |
|---|-------------------|--------------------------------|------------------------|--------------------------------|--------|------|
|   | Werewolf for Kids | Writers' Workshop (starts 2pm) |                        |                                |        | 5pm  |
|   |                   |                                | Convention Buffet Meal |                                |        | 6pm  |
|   |                   |                                |                        |                                |        | 7pm  |
| Valerie and Her Week of Wonders - Film Discussion |                   |                                |                        |                                |        | 8pm  |
|   |                   |                                |                        |                                |        | 9pm  |
|   |                   |                                |                        | Newbury 2: Battlestar Atlantia |        | 10pm |
|   |                   |                                |                        |                                |        | 11pm |
|   |                   |                                |                        |                                |        | 12am |
|   |                   |                                |                        |                                |        | 1am  |

**SUNDAY 8AM-5PM**

|      | Common-wealth   | Connaught   | Room 12  | Royal C+D  | Room 41  | Room 40   |
|------|---|---|--|--|--|---|
| 8am  |   |   |  |  |  |   |
| 9am  |   |   |  |  |  | 9:30am - Feedback                                 |
| 10am | Big Biology - What Are the Biggest Biological Tropes in SF? | Anthologies - The Art of Compilation                    | Easter Service - Christian                                       | Tai Chi Breathing Exercises for Health and Longevity | Legal Status of Fan Fiction and Video                          | Costume - Show and Tell                           |
| 11am | Guest of Honour Talk: Alastair Reynolds                     | Deface the Music - Quiz                                 | Writing BAD Blake's 7 Fic  | Belly Dancing  | Books: the Lure of First Editions, Leather Bindings, Art, etc. | Easter Egg Hunt                                   |
| 12pm | Eastercon Bid Session                                       | Exobiology 1.02   | Sci-Fi London Film Festival - Short Film Preview, Second Showing | Mediaeval Combat and Rapier Demonstration By the SCA | Writing Meaningful Reviews of TV Shows and Books               | Young Adult Fiction - Junior Panel                |
| 1pm  |   |   | Judge Dredd and Strontium Dog - Heroes or Anti-Heroes?           | Kids' Science Lab - Cars, Boats and Jet-Engines      | Arthur C. Clarke - Still Worth Reading?                        | Acting for All - Workshop for non-actors (adults) |
| 2pm  | Pyrotechnics - and the Walls Came Tumbling Down             | Not The Clarke Awards                                   |  | Art Auction  | Best Unread (in English) European SF Books                     |   |
| 3pm  | Guest of Honour Interview: Mike Carey                       |   |  |  | What Makes a Feminist Heroine?                                 | Junior Science - Question Time                    |
| 4pm  | Fusion Power and the Joint European Torus                   | BSFA Lecture: 2001 and the Narratology of Transcendence | GUFF Trip Report and Candidate Interviews                        |  |  |   |



**SUNDAY 8AM-5PM**

| Room 42      | Room 18   | Room 19  | Newbury 1  | Others  | Others |   |      |
|--------------|---|--|--|---|--------|---|------|
|              |   |  | Breakfast<br>(starts 7am)                              |   |        | 8am   |      |
|              |   | Crafts After<br>Breakfast -<br>Clangers and<br>Lightsabers |  |   |        |   | 9am  |
|              | Robot<br>Workshop<br>(Beyond<br>Cyberdrome<br>3D)                           | Kaffeeklatsch<br>- Mike Carey                              |  |   |        |   | 10am |
| Naming Pluto | Kaffeeklatsch<br>- Carlos<br>Ezquerria                                      |  | Convention<br>Buffet Lunch                             |   |        | 11am  |      |
|              |   |  |  |   |        |   |      |
|              |   |  |  | Hotel Lobby:<br>Eastercon<br>2011 & 2012<br>Membership<br>Desks                     |        | 12pm  |      |
|              | Redemption<br>'11 - What Do<br>You Want to<br>See?                          | Harry Potter<br>and the Half-<br>Cut Prince -<br>Rehearsal |  |   |        | Henleys<br>Drawing<br>Room: Stitch<br>'n' Bitch | 1pm  |
|              |   |  | Equinoctial<br>Ritual - a<br>Celebration<br>for Pagans |   |        | Newbury 2:<br>Battlestar<br>Atlantia            | 2pm  |
|              | Kaffeeklatsch<br>- Alastair<br>Reynolds                                     |  |  |   |        | 3pm   |      |
|              | Calligraphy<br>and Manuscript<br>Illumination<br>Workshop<br>(finishes 6pm) | Robot<br>Workshop<br>(Beyond<br>Cyberdrome<br>3D)          |  | Room 17: Crisis<br>Management -<br>Third Group of<br>Participants<br>(finishes 6pm) |        | 4pm   |      |

**SUNDAY 5PM-2AM**

|             | <b>Common-wealth</b>                                    | <b>Connaught</b>  | <b>Room 12</b>                                 | <b>Royal C+D</b>   | <b>Room 41</b>  | <b>Room 40</b>                                    |
|-------------|---|---|--|--|---|---|
| <b>5pm</b>  | Guest of Honour<br>Interview: Liz Williams              | The Genius of Alan Moore  | Information Decay and Archiving                | Physics of Weapons - for Children of All Ages                  | Eastercon Forum - Expectations of Childcare/Kids' Programming |   |
| <b>6pm</b>  | BSFA Awards   | Cutting Your Carbon Footprint                                   |  | Church of Chocolate  | Tax and Royalties - a Writer's Survival Guide                 | Poetry Reading - Poets and Listeners Both Welcome |
| <b>7pm</b>  |   | Virtual Attendees - Conventions' Future or a Minority Interest? |  | Film Premiere From Sci Fi London Film Festival (first showing) | Avatar - Was the Film Truly Ground-Breaking?                  | SF and Fantasy TV for Teens - Junior Panel        |
|             | 7:15pm - Harry Potter and the Half-Cut Prince - Musical |   |  |  | Stainless Steel Rats and Rogues - Why Do We Love Them?        |   |
| <b>8pm</b>  |   | Writing for Audio   | One Minute Past Eight: a Sunday Odyssey - Film |  |   |   |
| <b>9pm</b>  | Mitch Benn  |   |  |  |   | Bondage Workshop - Chest Harness and Hog-Tie      |
| <b>10pm</b> | Steampunk Ball  | Announcement of the 2010 Hugo Award Nominations                 | Filk Session                                   |  |   | Bondage Workshop - Dragonfly Harness              |
| <b>11pm</b> |   |   |  |  |   |   |
| <b>12am</b> |   |   |  |  |   |   |
| <b>1am</b>  |   |   |  |  |   |   |

**SUNDAY 5PM-2AM**

| Room 42 | Room 18   | Room 19                                  | Newbury 1              | Others  | Others |             |
|---------|---|--|------------------------|---|--------|-------------|
|         | Calligraphy and Manuscript Illumination Workshop (starts 4pm) | Costume - How to Adapt Patterns          |                        | Room 17: Crisis Management - Third Group of Participants (starts 4pm) |        | <b>5pm</b>  |
|         |   |  | Convention Buffet Meal | Henleys Drawing Room: Poly Social Gathering                           |        | <b>6pm</b>  |
|         |   | Sock Knitting - a Workshop for Beginners |                        |   |        | <b>7pm</b>  |
|         |   |  |                        | Newbury 2: Battlestar Atlantia  |        | <b>8pm</b>  |
|         |   |  |                        |   |        | <b>9pm</b>  |
|         |   |  |                        |   |        | <b>10pm</b> |
|         |   |  |                        |   |        | <b>11pm</b> |
|         |   |  |                        |   |        | <b>12am</b> |
|         |   |  |                        |   |        | <b>1am</b>  |

**MONDAY 8AM-5PM**

|             | <b>Common-wealth</b>                       | <b>Connaught</b>   | <b>Room 12</b>                                    | <b>Royal C+D</b>                                  | <b>Room 41</b>   | <b>Room 40</b>                     |
|-------------|--|--|---|---|--|------------------------------------|
| <b>8am</b>  |  |  |   |   |  |                                    |
| <b>9am</b>  |  |  |   |   |  |                                    |
| <b>10am</b> |  | Turning Manga and Anime into Live Action Movies - Does it Work?  | Groats - Designing Fannish Currency               | Tai Chi for Self-Defence                          | Fantasy and SF - Differing Attitudes to YA and Adult Readers |                                    |
| <b>11am</b> | Herschel - The Latest Images From Space    | Panels and Pages   | Language and Dialect in Writing                   | North West Morris Dancing for Beginners           | Humour in SF and Fantasy                                     |                                    |
| <b>12pm</b> |  | Scrabble Tactics   | Springheel Jack and the Wireless Theatre Company  | Steampunk My Child/Parent - Make Your Own Raygun! | Novels, a Product of Their Time                              | How to Send Your Script to the BBC |
| <b>1pm</b>  | Old Time Radio - Operation Tomorrow        | Just a Minute  | Climate Scepticism: Pros and Cons                 |   | Verne, Wells and the Classics - Are They Steampunk?          |                                    |
| <b>2pm</b>  | Old Time Radio - They Walk Amongst Us Here | Icons, Symbolism and Archetypes - Moving Between Faith & Fiction | Black Holes for Beginners                         | Balloon Modelling                                 | Fandom as Gerontocracy                                       |                                    |
| <b>3pm</b>  | Old Time Radio - The Outer Limits          | Escaped Lions and Runaway Elephants - True Stories               | Clanger Symposium - Study of a Knitted Alien Race |   | Dollhouse: Ethics and Identity                               |                                    |
| <b>4pm</b>  | Closing Ceremony                           | Intelligent Life in the Universe: Still a Believable Concept?    |   |   |  |                                    |

**MONDAY 8AM-5PM**

| Room 42                                     | Room 18 | Room 19  | Newbury 1  | Others   | Others                             |            |             |
|---|---------|--|--|--|------------------------------------|------------|-------------|
|   |         |  | Breakfast<br>(starts 7am)  |  |                                    | <b>8am</b> |             |
|   |         | Crafts After<br>Breakfast -<br>Clangers and<br>Lightsabers |  |  |                                    |            | <b>9am</b>  |
|   |         |  |  |  | Room 30:<br>Stargate 1969<br>- RPG |            | <b>10am</b> |
| La Menace<br>Vient De<br>L'Espace -<br>Film |         |  | Convention<br>Buffet Lunch   |  |                                    |            | <b>11am</b> |
|   |         |  |  |  |                                    |            | <b>12pm</b> |
|   |         |  |  |  |                                    |            | <b>1pm</b>  |
|   |         |  |  | Newbury 2:<br>Battlestar<br>Atlantia Wrap-<br>Up |                                    | <b>2pm</b> |             |
|   |         |  | Beyond<br>Cyberdrome 3D:<br>Robots Explore<br>the Third<br>Dimension |  |                                    |            | <b>3pm</b>  |
|   |         |  |  |  |                                    | <b>4pm</b> |             |

# MONDAY 5PM-2AM

|      | Common-wealth | Connaught   | Room 12  | Royal C+D                       | Room 41                                   | Room 40      |
|------|---------------|---|--|---------------------------------|---|--------------|
| 5pm  |               | Academic Robes and Their History                                | Researching Fantasy - How Do You Research the Imaginary?   |                                 | Heroes - Did it Live Up to Expectations?  |              |
| 6pm  |               | Clarke's Law - Is Today's Technology 'Magic' to Most People?    | Alien Invasions - How Would They Attack? How Do We Defend? | Dead Dog Party                  | Sherlock Holmes - Did You Like the Movie? |              |
| 7pm  |               | Grammar Police  | London as an SF/F Setting for Books, Comics and TV         |                                 |   |              |
| 8pm  |               | Film Premiere From Sci Fi London Film Festival (second showing) |  | Dead Dog Party - Equipment Sale |   |              |
| 9pm  |               |   | Bad Sex in SF  | Galaxyquest - Film              |   |              |
| 10pm |               |   |  |                                 |   | Filk Session |
| 11pm |               |   |  |                                 |   |              |
| 12am |               |   |  |                                 |   |              |
| 1am  |               |   |  |                                 |   |              |

# MONDAY 5PM-2AM

| Room 42 | Room 18 | Room 19 | Newbury 1                 | Others | Others |      |
|---------|---------|---------|---------------------------|--------|--------|------|
|         |         |         |                           |        |        | 5pm  |
|         |         |         | Convention<br>Buffet Meal |        |        | 6pm  |
|         |         |         |                           |        |        |      |
|         |         |         |                           |        |        | 8pm  |
|         |         |         |                           |        |        | 9pm  |
|         |         |         |                           |        |        | 10pm |
|         |         |         |                           |        |        | 11pm |
|         |         |         |                           |        |        | 12am |
|         |         |         |                           |        |        | 1am  |

# OPENING TIMES

## OPS

|          |             |
|----------|-------------|
| Thursday | 9pm to 11pm |
| Friday   | 9am to 11pm |
| Saturday | 9am to 11pm |
| Sunday   | 9am to 11pm |
| Monday   | 9am to 4pm  |

## BARS

|          |             |
|----------|-------------|
| Atrium   | 11am to 2am |
| Polo Bar | 2pm to 2am  |
| Henleys  | 7pm to 11pm |

NB. The Polo Bar charges full prices for drinks rather than the reduced con rates.

When Ops is closed, a Duty Committee Member will be available to assist instead. If the hotel can't solve your problem, or it is a problem with something that isn't to do with the hotel, then this is the person to find. They will be available until Ops re-opens.

You can identify them by their gold shirt, sash and DCM badge. They will normally be somewhere in the social space, but if you have trouble finding them anyone with a walkie talkie should be able to get hold of them.

## FOOD

|            |   |
|------------|---|
| Thurs eve. | 7pm to 9pm<br>in Newbury 2                            |
| Breakfast  | 7am to 10:30am<br>in the Brasserie<br>and Newbury 1&2 |
| Lunch      | 11am to 2pm<br>in Newbury 1                           |
| Dinner     | 6pm to 8pm<br>in Newbury 1                            |
| Late night | 10pm to 1am<br>in the Atrium                          |

The Brasserie also opens as a restaurant from 7:30pm to 11pm.

A selection of bar snacks will be available from the Atrium bar.

## DEALERS' ROOM

|          |             |
|----------|-------------|
| Friday   | 2pm to 6pm  |
| Saturday | 10am to 6pm |
| Sunday   | 10am to 6pm |
| Monday   | 10am to 3pm |

## ART SHOW

|             |               |
|-------------|---------------|
| Friday      | 1pm to 6pm    |
| Friday eve. | 7pm to 8:30pm |
| Saturday    | 10am to 6pm   |
| Sunday      | 10am to 12pm  |
| Monday      | <b>Closed</b> |

## CRÈCHE

|          |                            |
|----------|----------------------------|
| Friday   | 2pm to 6pm                 |
| Saturday | 9am to 1pm &<br>2pm to 6pm |
| Sunday   | 9am to 1pm &<br>2pm to 6pm |
| Monday   | 9am to 1pm                 |

NB. Places are limited and priority will be given to members who booked in advance. If you are late in collecting your child you will be liable for the cost of the crèche staff's overtime.

Evening babysitting can be provided for an additional fee, subject to availability (contact Lydia on 07931 449467).

This Pocket Programme belongs to:

Name

Steve Davies

Badge Number

178

If found, please bring it to Ops.