

Progress Report 2

Boskone 49

February 17-19, 2012

Westin Boston Waterfront Hotel, Boston, MA USA

www.boskone.org



BOSKONE 49 GUESTS

JOHN SCALZI

DANIEL DOS SANTOS

TONI WEISSKOPF

TRICKY PIXIE

For **Table of Contents** and **Index** see page 17.

Boskone is the annual science fiction convention run by NESFA, the New England Science Fiction Association. For latest information on Boskone check www.boskone.org **Note:** Boskone 49 will have hall costume awards!

TIMETABLE AND SCHEDULES

Pre-convention setup: Volunteers welcome and appreciated! Volunteers working at least 8 hours receive t-shirts, volunteers working at least 12 hours also receive a membership for Boskone 50—double credit for pre-and post-convention. Contact NESFA for specific times at (617) 625-2311 or visit www.nesfa.org/intimes.html

Date	Activity	Location
Sun Feb 12	Badge production, packing equipment and supplies for truck loading	NESFA Clubhouse 504 Medford Street Somerville, MA
Wed Feb 15	Truck loading	NESFA Clubhouse
Thurs Feb 16	Truck unloading and convention setup, volunteer registration	Westin Waterfront Hotel Boston, Massachusetts
Fri—Sun Feb 17–19	Boskone	Westin Waterfront
Sun Feb 19	Teardown and truck loading	Westin Waterfront
Mon Feb 20	Truck unloading	NESFA Clubhouse

CONVENTION HOURS OF OPERATION

Area	Friday	Saturday	Sunday
Registration	4 PM—8:30 PM	9:30 AM—6 PM	9 AM—Noon
Art Show	6 PM—Midnight	10 AM—10 PM	10 AM—Noon
Art Show Closeout	-	-	Noon
Art Show Sales	-	-	1 PM—3 PM
Con Suite	4 PM—1 AM	10 AM—1 AM	10 AM—4 PM
Hucksters Room	5 PM—8 PM	10 AM—6 PM	10 AM—3 PM
Information/ Volunteers	3 PM—9 PM	10 AM—9 PM	10 AM—3 PM
Programming	5 PM—Midnight	10 AM—Midnight	10 M—4 PM
Dragonslair	6 PM—9 PM	9 AM—Noon 1 PM—5 PM 7 PM—9 PM	9 AM—2 PM
Magic Tournament	-	-	9 AM (registration) 10 AM—??
“Dead Dog” socializing	-	-	Sunday evening, post teardown

LOCATIONS

Boskone programming and exhibit areas are in the Harbor Wing of the Westin Waterfront. Turn left in front of the hotel registration desk and go forward to the escalator lobby. The elevators are to the right of the escalators.

Location	Events
Galleria	Fascinator Construction (Fri night) Boskone Reception (Fri night) Sword-fighting demos Dead Dog (Sun)
2 nd Floor rooms	Silent movie (<i>Faust</i>) (Fri night) Filking (evenings) Interview and Portraiture (Sat) Tricky Pixie concert (Sat night) Awards Ceremonies (Sat night) Magic the Gathering ® Tournament (Sun)

Location	Activities
2 nd Floor pre-function space	Newsletter Distribution Point Photo Booth Program Participant Check-in Registration
2 nd Floor function rooms	Anime/Video Filking (evenings) Main Programming
Escalator lobbies	Fan tables (lower and upper levels, not 1 st floor)
Galleria	Art Show Art Demos Art Show Sales Autographing Con Suite Hucksters' Room Discussion Groups Dragonslair Gaming (general) Information Kaffeeklatches Literary Beers Newsletter Distribution Office Party board Print Shop Program Operations Volunteers desk

REGISTERING FOR/AT BOSKONE (2ND FLOOR)

Everyone (including program participants, artists, hucksters, and all volunteer workers) must register to receive their Boskone 49 name badge and convention materials. Please remember to bring a government-issued photo ID, such as a driver's license or passport, to registration. Ask at the convention Office in the Galleria for the after-hours Registration location if you arrive after 2nd floor registration hours.

The Boskone 49 registration form is online at www.boskone.org/reg.html Register online or print out the form and mail it with payment to NESFA, PO Box 809, Framingham, MA 01701 or fax the form and payment information to (617) 776-3243. At-convention membership rates apply starting **Wednesday, January 18, 2012**.

We accept major credit cards, Paypal, checks (US\$ drawn on a US bank), and money orders. Student memberships require school ID or proof of age if under 18.

Boskone 49 is also the site of an officially sanctioned, sealed deck, **Magic the Gathering**® (MtG) tournament on Sunday, February 19 limited to 180 players. Pre-registration for the tournament ends Thursday, February 16.

Pre-con Rates (available until January 18)

	Full weekend		Friday	Sat	Sun
	pre-con	at con			
Adults	\$49	\$55	\$15	\$40	\$15
College Students	\$35	\$35	\$15	\$35	\$15
K-12 Students	\$25	\$25	\$15	\$25	\$15
Kids-in-Tow (10 or under)	No charge but must be with parent or guardian at all time. Also, Kid-in-Tow membership does not include publications.				

The MtG Tournament costs **\$20** in addition to your Boskone membership (cannot be combined with Friday or Saturday one-day). Please bring your DCI number, if you have one. Registration will provide you with a ticket for MtG check-in. Please obtain the ticket before Sunday if possible. (While we plan to have a separate MtG registration line Sunday, it could be a long line.). For more information about the tournament and for MtG online registration, please visit www.boskone.org/gametournament.html

Membership Transfer

Bought a membership for Boskone 49 but can't attend? You may transfer the membership to another person, via a written letter or email. Notifying us in advance (at the PO Box 809 address on the back of this PR) or via email (to info-b49@boskone.org) will help expedite your transferee registering at the convention. Please

provide a copy of your transfer letter to your transferee to bring to Registration. (Notes Boskone does not refund memberships. Also, Life Memberships are not transferable.)

BOSKONE GUESTS

GUEST OF HONOR

John Scalzi is a renowned blogger, film critic, and *New York Times* bestselling writer. His non-fiction book ***Your Hate Mail Will Be Graded*** won the Best Related Book Hugo Award, and he has received Hugo nominations for his fiction.

OFFICIAL ARTIST

Daniel dos Santos' artwork appears on the covers of Ace books and Tor books, in Wizards of the Coast games, and in Disney productions. Awards he's won include a Chesley, a Silver Medal from Spectrum, and the 2007 Gaughan Award.

SPECIAL GUEST

Toni Weiskopf succeeded Jim Baen as the head of Baen Books in 2006. Prior to that, she edited numerous books and anthologies, and co-authored ***Greasy Grimy Gopher Guts*** (1995) with Josepha Sherman.

FEATURED FILKER

Northwest-Pacific-based **Tricky Pixie** mixes voice, strings, and drums, and storytelling in its interactive folk and the fantastic performances. This year's line-up adds Ben Deschamps of Heather Dale's band to Tricky Pixie veterans S. J. Tucker and Betsy Tinney. Tricky Pixie's website is www.trickypixie.com/

NESFA GUESTS

NESFA PRESS GUEST

Jerry Pournelle, contributor to NESFA Press book ***The Mathematics of Magic: The Enchanter Stories of de Camp and Pratt***, is a prominent science fiction writer, perhaps best known for his *Chaos Manor* magazine columns and weblog writings. Jerry is also a long-time science fiction fan, active in the Los Angeles Science Fantasy Society (LASFS).

HAL CLEMENT SCIENCE SPEAKER

Bruce Schneier is the internationally renowned security technologist who invented the term "Security Theater." A popular speaker at Minicons and Worldcons, Bruce's publications range from his book ***Applied Cryptography***, explaining the basis of computer security, to his 15,000+ readership newsletter, ***Crypto-Gram***. His newest book, ***Liars and Oaths***, will be out just in time for Boskone!

www.schneier.com/crypto-gram.html

HOTEL INFORMATION

Boskone's hotel is the **Westin Boston Waterfront**, on Summer Street in the South Boston Seaport district.. The hotel rates per night, not including tax are:

- o single/double \$153
- o triple \$163
- o quad \$173

Please specify **Boskone 2012** and **party** or **non-party block** when making your reservations to get the convention rate.

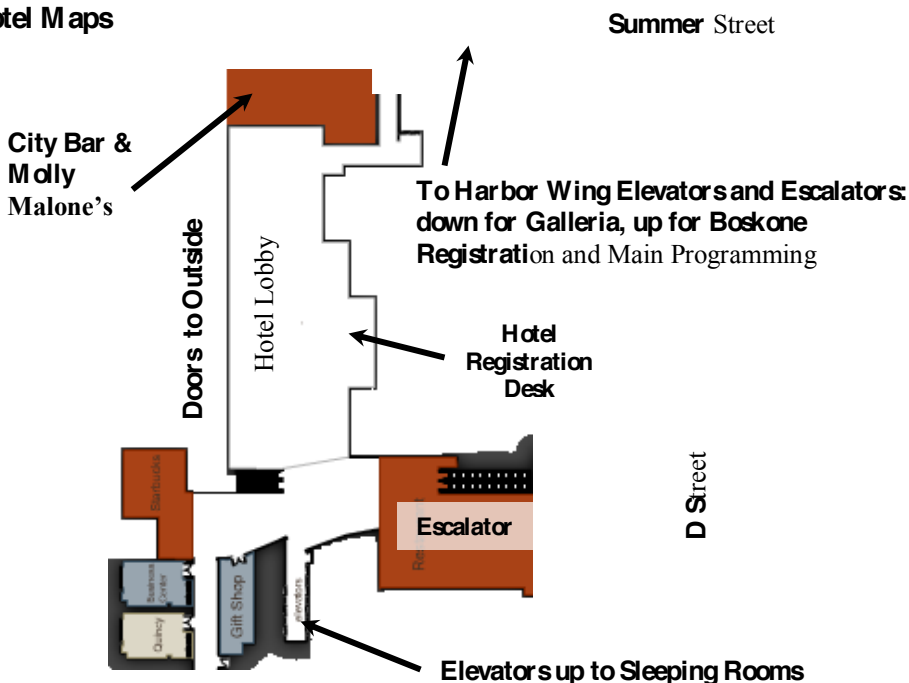
The best way to book is online at www.boskone.org/hotel.html. The phone reservation number is (800) 937-8461 if unable to book online. We strongly suggest making your reservations online, to ensure getting the convention rate. For suite availability, contact Boskone at hotel@boskone.org

Reservation deadline: January 18, 5PM EST. Please check the website for possible extension. Additional rooms may be available after the deadline or extension on a first-come first-served basis only. Be aware the **hotel charges one night's stay** if canceling reservations without at least **three days' advance notice.**

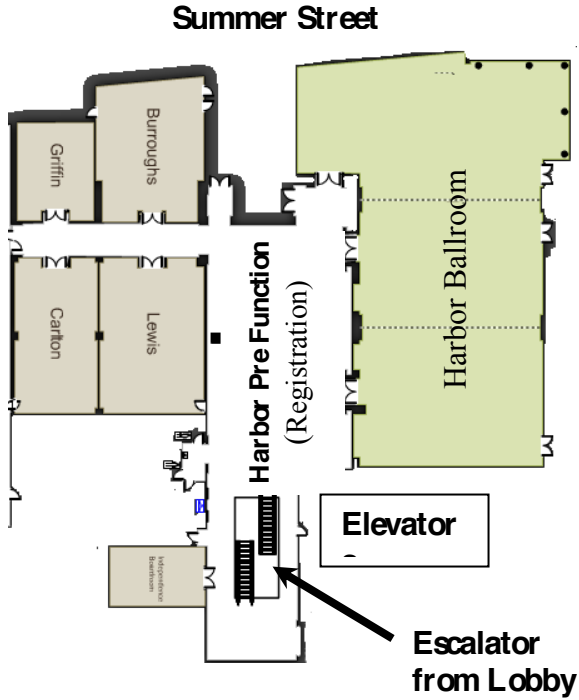
Notes:

1. The hotel has free WiFi only in the lobby area.
2. The hotel runs a complimentary shuttle for hotel guests to and from Faneuil Hall 5—8 PM Friday, and 4—8 PM Saturday and Sunday.

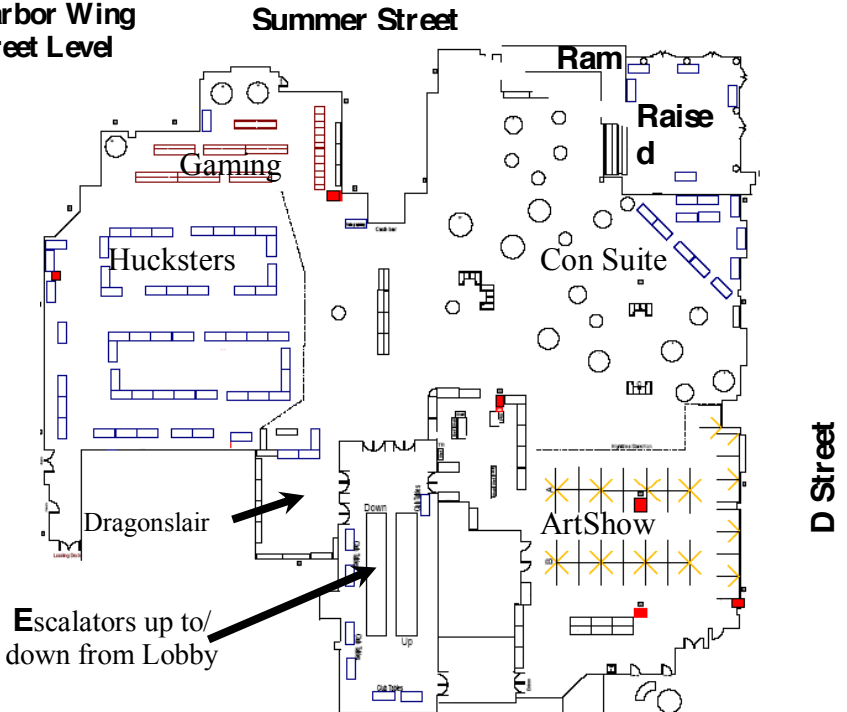
Hotel Maps



Harbor Wing 2nd Floor



Galleria Harbor Wing Street Level



EVENTS

Boskone 49's events include **Fascinators Construction**, a showing of the silent movie **Faust**, the **Boskone Reception**, **Higgins Armory** arms and fighting demonstrations, the Saturday night **Awards Ceremony** and **Tricky Pixie** concert, and a **Magic the Gathering**® tournament.

Friday Events

- o **Fascinators Construction**, a participatory event inspired by a certain astonishing royal wedding hat, occurs at 7 PM Friday in the Galleria. Make your own uh, er, um, whatever-it-is!
- o Gary McGath will be playing a live accompaniment to the silent film **Faust** on the second floor at 10 PM, following a panel discussion about Faust in film and literature. Seating for the movie has a 40 person limit.
- o The **Boskone Reception**, starting at 10 PM, is our traditional Friday evening event. The reception features a cash bar and Gay Ellen Dennett's selection of hors d'oeuvres and cheeses to accompany touring the Art Show and meeting and greeting old friends and new in the Con Suite.

Saturday Events

- o **Interview and Portraiture**: Official Artist Daniel dos Santos interviews and illustrates John Scalzi live at 2 PM Saturday, in a combination Guest of Honor interview and Artist Guest demonstration. Please come see the interaction of artist and writer!
- o Join us at 3 PM in the Galleria for the release party of **24 Frames into the Future**, this year's Boskone book, by Boskone Guest of Honor John Scalzi.
- o Boskone 49 is merging the **Guests Introduction**, the **Featured Filker Concert**, and the **Boskone Awards** ceremonies into an integrated event this year, starting at 8 PM. Our Featured Filkers, **Tricky Pixie**, will be performing throughout the event. Come watch as their music meets our other featured guests, storyteller Jane Yolen's personal cautionary tale about awards, and the awarding of the Skylark.

Sunday Events

- o Registration for the **Magic the Gathering**® tournament begins at 9 AM on the second floor. The tournament itself begins at 10 AM. This event includes a sealed deck TCG Player Max Series Point Qualifier for the Championship Event in Indianapolis in December. Each participant will receive three packs of Innistrad and three packs of Dark Ascension to build a 40 card deck to use in the tournament.
- o **Art Show Sales** occurs at 1–3 PM on Sunday. Bidding closes at noon. Please check any art you bid on during the sales hours, and make purchases by 3 PM!
- o The **Dead Dog** party occurs Sunday after teardown, celebrating taking down the art

show (and surviving it!), packing up the office, loading the truck, and bringing the convention to a successful end. We celebrate in the Galleria. Please pitch in with teardown! The more help we get, the sooner the party starts!

Galleria Events

- o **Higgins Armory** of Worcester presents fighting demos from authentic Roman legion armor and arms to light-saber duels.
- o **Kunstbruder** will present informal training in swordsmanship.
- o The **Party Board** lists open parties and other scheduled gatherings that invite Boskone members to come. To throw a party at Boskone, please reserve a room in the party block, see Hotel on page 6 for booking information. To publicize your party, write it on the Party Board and also leave a note for the convention newsletter at Information in the Galleria. If you need a suite, be sure to write to hotel@boskone.org

Second Floor Events

- o **Filking:** Filk is music of science fiction fandom. It includes some excellent writers and performers, but everyone is welcome to participate regardless of level of ability, or simply to come and listen. Filk-related items at Boskone include scheduled concert sets, theme circles, NESFA Hymnal singing, and evening “open filking.” Tricky Pixie and friends are performing as part of the Saturday night festivities.

BOSKONE ACTIVITIES

Boskone has continuing activities of programming and services. The key locations are in the Harbor Wing: the hotel’s lower level, referred to as “the Galleria,” and the second floor function space and pre-function space. Boskone 49’s activities include:

- o **Anime/Video:** Boskone has an anime and video track. Check the website and at the convention the Program booklet for times, places, and titles.
- o **Autographing:** bring (or purchase in the Hucksters Room!) books for signing by authors in the Galleria. The program booklet and the electronic program information going up on the website before the convention will include the autographing schedule.
- o The **Con Suite** is our hospitality area, with tables, chairs, snacks, and beverages. It is between the Art Show and Hucksters Room. Stop by for a place to sit, to meet new and old friends, and to have fun!
- o **Costuming:** Boskone returns to its old tradition of giving hall costume awards! Our roving judge will hand out ribbons on the spot honoring costumes which enhance the fantastic and science fictional atmosphere of Boskone. Take care not to poke others with your shoulder points and we hope that no one will step on your cape or train!
- o **Discussion Groups:** Discussion groups are small intimate conversations on focused topics, or even participatory knit-a-thons among attendees. We invite your participation generating ideas for topics and as volunteers to form and lead groups (“Birds of a Feather”). Please e-mail us at: program@boskone.org.
- o **Dragonslair** has activities and programming oriented to members between the ages

of 7 and 12. The activities include games, readings, crafts, and demos.

o The **Galleria**, on the lower level of the Westin, is the center of the convention. This year the Galleria includes a hotel-run cash bar Friday evening and Saturday afternoon.

o **Gaming:** Gaming at Boskone 49 includes board, card, and video games. Features this year include **Magic** demonstration games to help prepare for the tournament, Dominion, Ticket to Ride, Munchkin, the ever-popular Fluxx, and lots of other options. Come to the Galleria with your friends and join the in fun!

o **Information** is on the right entering the Galleria. The Information Desk includes Lost and Found, a news drop-off for the convention newsletter, maps and local restaurant menus, and general help and assistance for navigating Boskone and the local area. If we don't know the answer, we can help you find out whom to ask!

o **Kaffeeklatsches/Literary Beers:** Participate in an informal discussion with our program participants over coffee, tea, or beer. Sign up for these at the Program Desk, in the Galleria near Information.

o **Photo Booth** New for Boskone 49! Come get a picture of yourself on the moon, with your friends, as an alien, with a favorite author! Costume pieces and backdrops provided. Using your camera or ours, photos can be given to you at the con.

o The **Program Desk** is down in the Galleria between Information and the Office. Stop by to sign up for a Discussion Group, Kaffeeklatsch or a Literary Beer. Program participants check-in is up by Registration on the 2nd floor.

o **Readings:** Boskone runs readings, usually a half-hour long, when authors read from new or upcoming stories, followed by Q&A.

MAIN PROGRAM

Boskone 49's main program offers dozens of program items including panel discussions, talks by and interviews with our featured guests, and artists' demos and slide shows. Topics range across space, time, and plausibility, from the best SF/F of 2011 to film concert sets. Boskone program participants include writers, editors, literary agents, artists, critics, scientists, musicians, bloggers, and readers.

www.boskone.org/program.html has latest program information, and www.boskone.org/programparticipantlist.html lists program participants, and includes links to participant information. The list as of January 8, 2012 is:

Ellen Asher	Myke Cole	Daniel dos Santos
Laird Barron	Guy Consolmagno	Debra Doyle
Kate Baker	Karen Cooper	Claire Eddy
Alan F. Beck	Bruce Coville	Tom Easton
Beth Bernobich	F. Brett Cox	Claire Eddy
Joshua Bilmes	Kathryn Cramer	Bob Eggleton
Peter V. Brett	Leah Cypess	Gregory Feeley
S. C. Butler	Don D'Amassa	Michael F. Flynn
Dana Cameron	Gillian Daniels	Irene Gallo
Jeffrey A. Carver	Daniel P. Dern	Janice Gelb
Jeanne M. Cavelos	Ben Deschamps	Greer Gilman
B.A. Chepaitis	Bob Devney	Theodora Goss
Neil Clarke	Vince Docherty	Geary Gravel

Justine Graykin
Jordan Hamessley
Jack M. Haringa
David G. Hartwell
Jeff Hecht
Walter H. Hunt
Elaine Isaak
Alexander Jablovkov
Jordin T. Kare
Toni L. P. Kelner
Daniel M. Kimmel
Rosemary Kirstein
Leonid Korogodski
Robert Kuhn
Sharon Lee
Fred Lerner
Paula Lieberman
Shira Lipkin
Laurie Mann
Darlene Marshall
Gary McGath
Steve Miller

Resa Nelson
Patrick Nielsen Hayden
Mark L. Olson
Priscilla Olson
Jean-Pierre Normand
Chad Orzel
Suzanne Palmer
Jennifer Pelland
Steven Popkes
Jerry Pournelle
Faye Ringel
Margaret Ronald
Ruth Sanderson
Steven Sawicki
Sharon Sbarsky
John Scalzi
Marc Scheff
Bruce Schneier
Ken Schneyer
Darrell Schweitzer
Stephen Segal
Joan Slonczewski

Melinda Snodgrass
Jacob Sommer
Bud Sparhawk
Allen M. Steele
Ian Randal Strock
Charles Stross
Benjamin Tate
Betsy Tinney
Ian Tregillis
Paul G. Tremblay
S. J. Tucker
Catherynne M. Valente
Genevieve Valentine
Michael J. Walsh
David Wellington
Toni Weisskopf
Mary Ellen Wessels
Leah Wilson
Phoebe Wray
Jane Yolen

EXHIBITS

ART SHOW

Boskone 49's **Art Show** features paintings by Official Artist Daniel dos Santos and various artwork by other exhibitors. Much of the artwork is for sale, including original paintings, Giclee prints, reproductions, jewelry, sculpture, handmade/hand-decorated tableware, and other artwork. To enter the Art Show, visit www.boskone.org/artshow.html where there is an entry form. Refer to the rules at www.boskone.org/ArtistRules.pdf for what can be entered and fees.

o Boskone also provides space for **art resale**, for people de-acquisitioning artwork. We charge a \$3.00 per square foot (or fraction thereof) hanging fee. Complete the Art Show Entry Form as if you were an artist with original work and indicate Resale.

o The **Print Shop** displays prints for immediate sale at fixed prices. To enter prints in the art show see the rules for reproductions in the rules.

For all types of entries and any questions, email artshow@boskone.org

This year's **special art exhibit**, assembled by Joe Siclari and Edie Stern, is **Science Fiction Grand Masters – Illustrated**, featuring artwork inspired by the works of Grandmasters Robert A. Heinlein, Jack Williamson, Clifford Simak, L. Sprague de Camp, Fritz Leiber, Andre Norton, Arthur C. Clarke, Isaac Asimov, Alfred Bester, and Ray Bradbury. These works include art from bookcovers, magazine illustrations,

comic book adaptations, and other forms. The artists represent a Who's Who of the field (past and present), including Vincent Di Fate, Leo & Diane Dillon, Bob Eggleton, Dean Ellis, Ed Emsh, Kelly Freas, Jack Gaughan, Hubert Rogers, Barclay Shaw, Darrell Sweet, and Ed Valigursky. We'd like to show even more. If you have appropriate pieces that you'd consider bringing, please contact Joe Siclari and Edie Stern at artshow@boskone.org

Purchasing Artwork: Art for sale at Boskone uses a written bid system where buyers register for a bidder number, and place their bid and bidder number on the bid sheet of a piece of art. The highest bid wins. Bidding ends at the piece location when the sweep passes that location during closeout at noon on Sunday. The exceptions are pieces with a purchase immediately price. Boskone does not have a voice art show auction.

Art Show Sales is from 1–3PM Sunday.

Artists in the show currently include (see www.boskone.org/artshow.html for latest):

Bonnie Atwood	Elizabeth A. Janes	Marianne Plumridge-
Alan F. Beck	Kelly M. Kotulak	Eggleton
Daniel Cortopassi	Liz LaValley	Marc Robinson
Kathryn Cramer	Katie Lennon	Coralynn Rowell
Charlene Taylor	Mike Maung	Ruth Sanderson
D'Alessio	Becky Maung	Dave Seeley
Chris Dame	Sally Mayer	Donna Shapleigh
Daniel dos Santos	Thomas Nackid	Rachel Silber
Bob Eggleton	Jean-Pierre Normand	Deborah "Darkwng"
Linda Graves	William O'Connor	Smith
Margery Harrison	Priscilla Olson	Jay Trefethen
Lisa Hertel	Margaret Organ-Kean	Joan Turner
Chris Howard	David Lee Pancake	Vincent Villafranca
Jonathan Hunt		Donna L. Young

Boskone's art programming includes demonstrations, discussions, critiques, and dueling easels.

HUCKSTERS' ROOM

The **Hucksters' Room** features science fiction, fantasy, and genre books, jewelry, crafts, and related materials for sale. Check the Boskone website for the list of dealers. The Hucksters Room will be in the Galleria, sharing space with the Art Show, Con Suite, and Gaming. For more information, email hucksters@boskone.org

SERVICES & PUBLICATIONS

Club & Bid Tables Want to publicize your club, convention, or bid? We have a limited number of tables available. Please write or email us at info-b49@boskone.org in advance for information and reservations.

Helium Balloons Available for Pre-Order: We're again ordering Mylar balloons to decorate the Galleria. To join the order, email info-b49@boskone.org with the number of balloons by January 31, 2012. Last year's pricing was \$30 for 10 Mylar balloons, mixed colors. Include the number of balloons (lots of 10 only) and your cell phone number. Pick-up & pay (cash or check) at the Con Office in the Galleria between 5PM & 8PM on Friday. (Price subject to change based on actual Feb 2012 costs.)

The Newsletter, ***Helmuth, Speaking for Boskone***, contains updates and changes to the program, lists of parties, news, and even at-con pictures. Distribution locations include Information and Registration. *Helmuth* is always looking for line art. Email ideas and digital graphics to info-b49@boskone.org or bring contributions to Information at-con.

The **Restaurant Guide** is online at www.boskone.org/rest.html Information will have printed copies and menus from nearby restaurants. The Seaport district is Boston's newest destination for dining—several new outstanding restaurants have opened in the past twelve months. A hotel shuttle to Faneuil Hall runs 5–8 PM hourly on Friday and 4 PM to 8 PM hourly Saturday and Sunday. We recommend making restaurant reservations (weekends can be busy). A number of restaurants deliver to the hotel, for those who prefer staying on-site.

Volunteering at Boskone

Everyone who works on Boskone is a volunteer, and we'd love to have you join us. We'll be putting things together at the NESFA Clubhouse in Somerville, Massachusetts in February. Please email us at volunteers@boskone.org for more information. You can also check the NESFA website at www.nesfa.org/intimes.html

The **Timetable and Schedules** table on page 2 lists the main dates for getting ready for the convention. We invite volunteers to join us at the NESFA Clubhouse for badge-making, equipment pack-up, and truck-loading. The night before the convention starts, join us at the hotel for truck unloading, program booklet assembly, book numbering, Art Show construction. Learn what it means to remove the contents of "the coffin," help build "helicopters," and discover the "SBOF." (You'll also get your convention badge Thursday night if you help with set-up, saving you from any registration lines later.)

During the convention we need volunteers to help with Registration, Con Suite, Program, Art Show, Dragonslair, Office, etc.

Sunday, at the end of the convention, we appreciate help packing up and loading the truck. Your rewards for helping out include the satisfaction of helping to put on Boskone. Other benefits include: books, snacks, a t-shirt for working at least 8 hours, and membership in Boskone 50 for working at least 12 hours. Volunteer hours before

the convention and at the end of the convention count double toward the 8 and 12 hour requirements.

DIRECTIONS TO THE WESTIN WATERFRONT HOTEL:

FROM LOGAN INTERNATIONAL AIRPORT

(Note: specify Westin Waterfront to taxi or van services and drivers to avoid confusion with the Westin at Copley Plaza or other properties.)

- o **Mass Transit (the T):** Take the Silver Line Bus, SL1, towards **South Station**, get off at the **World Trade Center Station**, and follow the directions below.
- o **Cabs:** Taxi fare is approximately about \$20.
- o **Shared Van:** Shared van to the hotel was approximately \$10 last year. The Flash application massport.com/massport/gtu generates a list of van companies with contact information when specifying shared van as mode, Logan as departure location ,and 425 Summer Street, Boston, as destination. www.massport.com/logan-airport/To%20and%20From%20Logan/GTU.pdf has the most recent Massport ground transportation brochure. Massport's phone is (800) 22-LOGAN (TTY: (800) 262-3335.)

RAIL

- o **Amtrak:** Take the train to **South Station** and transfer there to the **Silver Line Bus SL1** or **SL2** to **World Trade Center Station**, and follow the directions below.
- o **Commuter Rail from T. F. Green Airport (Providence, RI):** a limited schedule runs to South Station. See mbta.com/schedules_and_maps/rail/lines/?route=PROVSTOU for details.
- o **Other Commuter Rail:** See www.mbta.com for other commuter rail service and schedules and connections to South Station.

MASS TRANSIT (“The T”)

Get to South Station. From South Station transfer to the Silver Line SL1 or SL2 to the World Trade Center Station, and follow the directions below. For schedule details, see www.mbta.com/schedules_and_maps/subway/lines/?route=SILVER#Waterfront or call (617) 222-3200 or (800) 392-6100. (**Important note**—the Red Line is running buses instead of subway trains between Alewife and Harvard Stations on Saturdays and Sundays, see www.mbta.com/rider_tools/transit_updates/?ttype=subway&advisory=true&route=Red+Line#details)

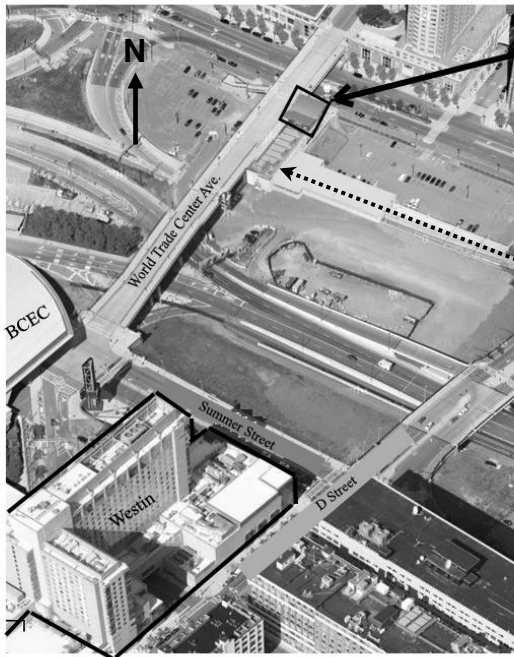
FROM WORLD TRADE CENTER T STATION (SILVER LINE)

Go up 3 escalators, following signs to World Trade Center Avenue. Keep following the signs for “World Trade Center” and “World Trade Center Avenue.” At the top of the final escalator, veer slightly to the left, then go through the doorway in front of you to World Trade Center Avenue. If you see a large statue of four horses on your left, you are going the right way. You’ll also see the large Boston Convention & Exhibition

Center (BCEC) directly in front of you, and the Westin to its immediate left. Walk along World Trade Center Ave. until it ends at Summer Street. Cross the street and veer left beside the driveway and walk up it to the Westin doors. The total walk is less than 1/4 mile.

MAP

The picture below shows the Westin Boston Waterfront Hotel (425 Summer St. in South Boston) and key nearby features. The building marked Westin (lower left corner) is the hotel. High speed depressed roads block ground level access between the Westin and the World Trade Center MBTA Station (indicated by the arrow). World Trade Center Ave. and D Street carry pedestrian and vehicular traffic on bridges above the depressed roads. A corner of BCEC's big curved roof shows next to the Westin.



World Trade Center
MBTA Station
Top Level Exit

Equine statue

Buildings in the lower right corner obscure the continuations of Summer Street and D Street.

DRIVING TO BOSKONE

Note: Google directions from the south and west are usable except for taking you to the hotel loading dock instead of the main entrance.

From the **NORTH**

Take I-93 South to Boston and go into the tunnel.

Take exit 20A, South Station.

At the top of the ramp, cross a pedestrian walkway and turn left onto Summer St. Go 0.8 miles on Summer St.

Turn right at the traffic light by the convention center, then left into the hotel driveway.

From the **NORTH SHORE** via route 1A

Take 1A south towards Logan Airport.

Take the Mass Pike westbound (Ted Williams Tunnel) to exit 25, South Boston.

Make a slight right onto Congress St.

Turn right onto D St., then right onto Summer St.

Turn left at the next traffic light (very close), then left into the hotel driveway.

From the **SOUTH**

Take I-93 north to Exit 20 toward: I-90 / Logan Airport / South Station / BCEC.

Take the left fork towards Logan Airport and South Boston.

In the tunnel, take the right fork for South Boston.

At the top of the ramp, bear right toward D St.

Cross B St. (traffic light), turn right on D St. (next traffic light).

The first light on D St. is Summer St.; turn right. Turn left at the next traffic light (very close), then left into the hotel driveway.

From the **WEST**

Take I-90 (Mass Pike) eastbound to the South Boston exit (Exit 25)

Get in the left-hand exit lane, marked “Seaport Blvd.”

As you get out of the tunnel, follow the left-hand ramp.

Go through the first traffic light.

Go one long block and turn right on Northern Avenue.

Go through two lights (B St. and an overpass/pedestrian crossing.)

At the 3rd light, turn right on D St.

Go through two lights (Congress St. and a trolley-bus road.)

At the 3rd light, turn right on Summer St.

Turn left at the next traffic light, then left into the hotel driveway.

Lost? The Westin Boston Waterfront phone number is (617) 532-4600.

PARKING

Parking at the Westin Waterfront is \$33—\$43 per day. On-street parking is \$1.25/hr metered 8 AM—8 PM, limited to 2 consecutive hours, except for Sundays and holidays during which metering does not apply. Check the signs carefully for legal parking spaces, as opposed to taxi/commercial vehicle areas. Nearby commercial parking lots exist but beware the fine print about evening and weekend prices. For possible parking alternatives, check the Boskone website closer to Boskone.

TABLE OF CONTENTS

Alphabetical Index	Main Sections
24 Frames Release Party ----- 8	CONVENTION HOURS OF
Anime/Video ----- 9	OPERATION----- 2
Art Show ----- 11	TIMETABLES AND SCHEDULES-- 2
Art Show Sales ----- 9, 12	LOCATIONS ----- 3
Autographing ----- 9	REGISTERING ----- 4
Boskone Awards Ceremony ----- 8	BOSKONE GUESTS ----- 5
Boskone Reception ----- 8	HOTEL INFORMATION ----- 6
Boskone Online ----- 18	EVENTS ----- 8
Club & Bid Tables ----- 12	BOSKONE ACTIVITIES ----- 9
Con Suite ----- 9	MAIN PROGRAM ----- 10
Costuming ----- 9	EXHIBITS ----- 11
Dead Dog Party ----- 9	Art Show ----- 11
Directions to Boskone ----- 14	Hucksters ----- 12
Discussion Groups ----- 9	SERVICES & PUBLICATIONS ---- 12
Dragonslair ----- 10	DIRECTIONS TO BOSKONE ----- 14
Events ----- 8	ABOUT NESFA AND NESFA
Fascinator Construction ----- 8	PRESS----- 18
Featured Filker Concert ----- 8	NESFA ONLINE AND
Filking ----- 9	CONTACTING NESFA ----- 18
Galleria ----- 7, 10	BOSKONE ONLINE AND
Gaming ----- 10	CONTACTING BOSKONE ----- 18
Guests ----- 5	BOSKONE ADVANCE SALES
Helium Balloons ----- 13	FORM ----- 19
Higgins Armory ----- 9	
Hotel Information ----- 6	
Hucksters' Room ----- 12	
Information ----- 10	
Interview and Portraiture ----- 8	
Kaffeeklatsches ----- 10	
Literary Beers ----- 10	
Locations ----- 3	
Magic Tournament ----- 4, 8	
NESFA and NESFA Press ----- 18	
Newsletter— <i>Helmut</i> ----- 13	
Parties ----- 9	
Photo Booth ----- 10	
Print Shop ----- 12	
Program ----- 10	
Program Desk ----- 10	
Program Participants ----- 10	
Readings ----- 10	
Registration ----- 4	
Restaurant Guide ----- 13	
Transferring Memberships ----- 4	
Volunteering at Boskone ----- 2, 13	

ABOUT NESFA & NESFA PRESS

NESFA, the New England Science Fiction Association, doesn't only run Boskones. NESFA owns and operates the NESFA Clubhouse at 504 Medford Street in Somerville, MA, which contains meeting space, the NESFA library, and NESFA Press books for sale. NESFA has both formal and informal meetings and events at the Clubhouse and off site each month. Formal meetings are once a month on Sunday afternoons. Most Wednesday nights see people at the Clubhouse mixing work on NESFA projects with gaming, reading/borrowing/returning NESFA Library books, and socializing. www.nesfa.org has more information about NESFA activities and the upcoming events schedule. Our phone number at the Clubhouse is (617) 625-2311. We welcome visitors and prospective new members.

NESFA's other main project is NESFA Press, which publishes hardbound editions of work by such classic science fiction writers as Cordwainer Smith, Zenna Henderson, Poul Anderson, Roger Zelazny, and William Tenn. NESFA Press most years also publishes a book by the Boskone Guest of Honor.

This year's new releases include ***24 Frames into the Future*** by John Scalzi. The advance order form follows. Copies of ***24 Frames*** and dozens of other NESFA Press books, will be on sale at Boskone at the NESFA table at the front of the Hucksters Room.

NESFA Online and Contacting NESFA

Follow NESFA and NESFA Press updates, post questions, make comments or upload photos to Facebook (NESFA) and LiveJournal. NESFA Press' webpages are accessible at www.nesfapress.org or via link from the main NESFA www.nesfa.org site.

Boskone Online and Contacting Boskone

Follow Boskone updates, post questions, make comments or upload photos to Facebook (boskone), LiveJournal (boskone), Twitter (boskonenews), Twitpic (boskonenews), blog (boskone49.wordpress.com), or Flickr (boskone). We'll be reporting from the con on Twitter and Facebook. Please visit our website, www.boskone.org for the latest information about the convention.

BOSKONE 49 ADVANCE SALES FORM

Pickup At-Con from NESFA Sales

24 Frames by John Scalzi_Requested Numbers

___ Boxed @ \$29.40 = \$ _____, _____, _____ (1-140 available)

___ Unboxed @ \$16.80 = \$ _____, _____, _____ (141-1101 available)

Mail Order

24 Frames by John Scalzi_Requested Numbers

___ Boxed @ \$49.00 = \$ _____, _____, _____ (1-140 available)

___ Unboxed @ \$28.00 = \$ _____, _____, _____ (141-1101 available)

\$ _____ Total for books

Sales Tax \$ _____ 6.25% (for at Con Pick-up or mailed to Mass. Address)

Postage \$ _____ (domestic: \$4 for 1 item, \$8 for 2-5 books)

(non-US: \$12 per book)

\$ _____ Grand Total

Mail to: Boskone Advance Orders, PO Box 809, Framingham, MA 01701 USA
or fax to: (617) 776-3243. Order Deadline is February 1, 2012.

Name _____

Address _____

City _____ State/Province _____

Zip/Postal Country _____ E-mail _____

Phone Number _____

I am paying by (select) ___ Check or money order (Make payable to NESFA)

___ PayPal (paypal@nesfa.org)

___ NESFA Advance Account

___ Credit card (Visa/MasterCard/ Discover
/American Express)

Card # or PayPal receipt # _____

Exp. Date _____ (mm/yy) CVV # _____ (code on reverse of card)

Name on Card _____

Signature _____

BOSKONE 49

PO Box 809

Framingham, MA 01701