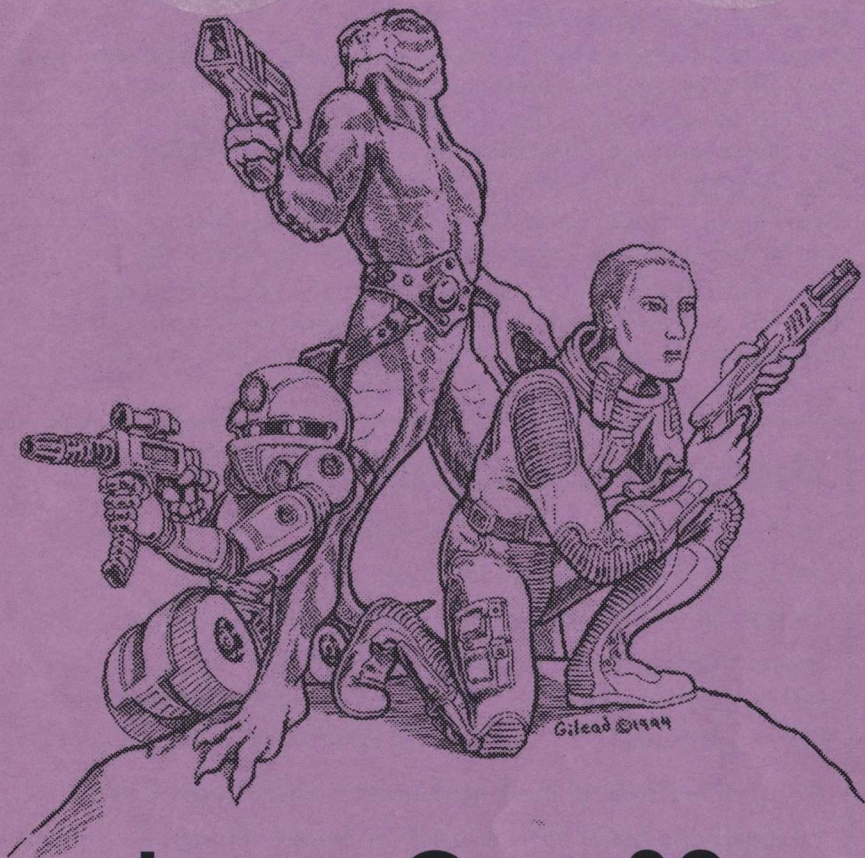


LEPRECON 30



LepreCon 30

Progress Report

May 7-9, 2004

featuring the Largest SF&F Art Show in the West

**NEW
HOTEL!**

Sheraton Crescent at Dunlap & I-17

Register now – 3 days for \$35

(\$40 after 4/25/04)

www.leprecon.org/lep30

Register Now and Win!

Preregister for LepreCon 30 **AND** book a hotel room at the Sheraton Crescent to be eligible to win one of the following prizes:

One Free Room Night at the Crescent during LepreCon;

Two Memberships to World Fantasy Convention 2004 (October 2004); or

Two Memberships to LepreCon 31 (May 2005).

Please make sure all people staying in the room are listed when making your hotel reservation so that they will all be eligible for the drawing!

Use the special page at www.leprecon.org/lep30/regpr.html for online registration — it will help us track the response to this mailing.

You only have until April 25th to register at this low rate! Get yours now!

Sheraton Crescent Hotel

2620 W. Dunlap Ave. • Phoenix, AZ 85021

(602) 943-8200 • (800) 423-4126

To reserve your room online, go to: <http://tinyurl.com/2hm9c>

Room Rates: (by occupancy, plus tax)

\$79 Single/Double

\$178 Junior Suite (sgl-quad)

\$99 Triple/Quad

\$250 Penthouse Suite (sgl-quad)

Remember to tell the hotel you're with LepreCon!

- **Throwing a Party?** Be sure to ask for Floor 7, if rooms are still available. The convention's social activities will be centered here.
- **Time is of the Essence** — Be sure to make your room reservations soon, as the room block will disappear by April 22. After that there is no guarantee that any rooms will be available for convention members. *Please note that rooms are \$10 cheaper per night than last year!*
- **Low Price Menu** — At press time, we are anticipating that the hotel will be modifying their menu especially for us to include a couple of low-price options. Also, there are additional restaurants within walking distance, and Metrocenter is across the freeway.
- **Hotel Amenities** — Check out the upgraded mattresses, pools & whirlpool, tennis, basketball, and sand volleyball courts, barbecues, and the **Monsoon Mountain Water Slide!** The function space is centrally located, and there is also nice covered parking in the garage.
- **Your Room Supports the Convention** — The more rooms filled by convention attendees reduces the amount paid by the convention to use the hotel's function space. **Tell the hotel you're with LepreCon!**

EARLY ACTIVITIES & SPECIAL EVENTS!

Thursday Night Activities (May 6) — Pre-registered members of LepreCon will be able to attend the Velavision game “What’s That Byte?” and there will be a special session with Author Guest of Honor David Drake.

Filmmaking Event — Help work on a movie! The teaser/trailer will be created at the convention, and will require pre-Con participation as well. Look for the blurb on page 4 if you’re interested.

Friday Night Art Show Tour — Come join us for the guided tour of the Art Show hosted by Guests of Honor Donato Giancola and Sylvana Anderson-Gish.

Friday Night Chill Party — Confusion Crew and Velavision join forces to give you a great relaxing and conversational party on Friday night. Follow the signs!

Saturday Blood Drive — Sign up for the Robert A. Heinlein Blood Drive in the lobby outside the ballrooms. All blood donors (accepted or rejected) will be given priority seating at the Masquerade. Contact us for details if you need them.

Saturday Charity Auction — Saturday afternoon’s Auction will benefit the Association of Science Fiction and Fantasy Artists (ASFA). Please expect to come and spend money to benefit this non-profit organization. For more info, look for the blurb on page 5.

Saturday Night Masquerade — This costume contest is being planned as a different type of event... if you’re interested in participating, be sure to look for the blurb on page 4 for **important** contact information!

Saturday Night Dance — Hosted by Confusion Crew... and yes, glowsticks, laser pointers and various bits of LED accessories will be available for purchase to enhance your dancing experience.

KID RATES & AT-THE-DOOR PRICES

Kids ages 7–12 are half-price

Kids ages 6 and under are free with adult membership

At-the-Door Rates —

Full membership \$40 (Thur night, Fri, Sat, Sun)

Sat/Sun only \$30

One-Day rates are: Fri \$15, Sat \$25, Sun \$15

GUESTS OF HONOR

Artist Donato Giancola

Donato is a Chesley Award-winning artist ('96, '98, '01, '02), who's works have graced the covers of an untold number of books, including *The Voyage*, *Queen of Demons*, *Servant of the Dragon*, *Dogs of War*, *Mistress of the Catacombs*, and *Goddess of the Ice Realm* by other GoH David Drake. Donato has done a lot of *Lord of the Rings* themed art, and many *Magic* cards for WotC. He has also done some commercial packaging work, about which Donato says, "In a fun departure, I created all the art for the most recent release of the Stratego board game (it's redone every decade), one of my favorite childhood games. I used my family as models for the game pieces, and if you buy the game, you can see my two brothers, father, father-in-law, some friends and cousins as well as myself (I'm the Colonel) decked out in authentic Napoleonic era uniforms."

Author David Drake

He has written or co-written 49 books, and is best known for his military SF, but his body of work also includes humor, thriller, epic fantasy, space opera, and historical fantasy and SF. See what you may recognize:

Hammer's Slammers	Lacey and His Friends
The Dragon Lord	Counting the Cost
Time Safari	Kill Ratio
From the Heart of Darkness	Fortress
Skyripper	Dagger
Cross the Stars	The Sea Hag
Birds of Prey	Target
The Forlorn Hope	Explorers in Hell
At Any Price	Vettius and His Friends
Killer	Rolling Hot
Active Measures	Northworld
Bridgehead	Surface Action
Ranks of Bronze	The Hunter Returns

Vengeance	Fireships
The Military Dimension	Redliners
The Warrior	Patriots
Old Nathan	Lord of the Isles
The Jungle	With the Lightnings
Justice	Queen of Demons
Starliner	Servant of the Dragon
The Square Deal	Lt. Leary, Commanding
The Sharp End	Mistress of the Catacombs
Igniting the Reaches	Paying the Piper
The Voyage	Grimmer Than Hell
Arc Riders	Goddess of the Ice Realm
Through the Breach	Far Side of the Stars
The Fourth Rome	Codex
All the Way to the Gallows	

Special Artist Guest John Eaves

Production designer John Eaves has had a major impact on the look of the *Star Trek* universe since 1994. He has been responsible for creating many of the props and ships for *Star Trek: Deep Space Nine* and the *Star Trek: The Next Generation* films, including the USS Enterprise NCC-1701-E and Zefram Cochrane's Phoenix. Eaves was hired to work on *Star Trek Generations*, where he was responsible for designing the Enterprise NCC-1701-B from which James T. Kirk would meet his (first) demise.

Filk Guest Mara Brener

In 1984 the Breners attended their first science fiction convention, LACon II in Anaheim, where they chanced upon the word 'fилksinging' on the schedule. They spent most of the rest of the con in that room, discovering they had been filking long before they knew was it was. At the same time, Mara was also, via cassette, making her debut on KPFK Radio's occasional "Smut Unlimited" program, with a six-hour hit song that you will only hear if you catch the midnight bawdy songs circle.

Local Artist Guest of Honor Sylvana Anderson-Gish

She is a sculptress who does not limit herself to just clay... she also expresses her artistic abilities in music, photography, textiles, clothing design, basketry, painting and many more such mediums; some for which she has won national awards. As a spiritualist, Sylvana feels that "...art is the spirit made visible."

MASQUERADE

If you are interested in participating in this year's Masquerade, you need to contact Margaret Grady (602-220-0150) at mgrady@eigi.com **as soon as possible**. There is a 'future military' theme planned (a la *Star Trek*), and preferably your costume can work along with it. (It will require advance coordination and some pre-show activity.) We'll also have nice prizes, and a great half-time show... but limited seating, so get there early!

FILMMAKING EVENT & PROGRAM TRACK

Welcome to a new feature of programming! Filmmaking will be a separate track with panels and workshops that will show you how a movie is put together.

This year we will introduce you to the process, and you can be a part of making a teaser/trailer for next year's LepreCon movie, and we'll premiere the trailer at the Barry Bard movie preview panel on Sunday. Some of the elements will have to be started before the convention, so if you would like to be a part of our filming adventure Pre-Con and/or At-Con, please email us at lep30@leprecon.org.

Our programming track will cover screenplay writing, concept design, prop building, costuming, filming, lighting, special effects make-up, editing and computer effects. Hope to see you there!

PROGRAMMING

To start with, our pre-registered attendees will have a special opportunity Thursday evening to share some time with David

Drake, our Author GoH. We'll also feature the fan-favorite game "What's That Byte?"

Throughout the day on Friday we'll have panel discussions, presentations, readings and demonstrations. In the early evening we'll have the traditional Meet-the-Pros in one of the ballrooms. The "Junkyard Wars" contest will follow, and then we'll have UFP's annual Sci-Fi-Jeopardy game.

Saturday will feature the Robert A. Heinlein Blood Drive, and sign-up will occur outside the ballrooms. Contact us if you need details. All blood donors (accepted or rejected) will be given priority seating at the Masquerade.

Throughout the day we'll have our Guest-of-Honor Spotlights, the track of filmmaking programming, the fabulous Filk Concert, and the Charity Auction in the afternoon. The evening will kick off with the Masquerade, to be followed by the Modern Dance brought to you by Confusion Crew.

On Sunday, we have the Art Auction, more panels, readings, presentations, demos and all. We'll close out the day with the Con Feedback panel where you can tell us what you liked or didn't like, so we know what to think about for next year's convention... so please come and share your thoughts.

CHARITY AUCTION

This year the Auction will benefit the Association of Science Fiction and Fantasy Artists (ASFA). The ASFA is a 501(c)3 non-profit, educational association whose membership is made up of amateur and professional artists, art directors, art show managers, publishers, collectors — and just about anyone with an interest in the art of the genre.

Keep watching our webpage — as we get more good stuff, we'll be posting it there. You can start planning your con budget...

Here's a list of the goodies so far:

"Traveller" framed cover art by David Mattingly, signed, 5 of 50
ltd print, acid-free paper (gaming book cover)

Return of the Jedi Presto Magix transfers, 1983

Several 8x10 autographed photos of TV stars from *DS9*, *Voyager*,
TNG, *Lost in Space*, *First Wave*.

Poster from Science Fiction Festival 1998, sponsored by Phoenix
Public Library — autographed by Alan Dean Foster, Jane
Lindsfold, John Vornholt, Jennifer Roberson, Timothy Zahn

Action figures

Game action figures

3-Dimensional *Star Trek* Album, 1996, still in shrinkwrap

Star Wars, Episode I, "Royal Elegance Queen Amidala" doll

Star Wars, *Jedi Unleashed* game

Various movie trailers

The Keeper's Price by Marion Zimmer Bradley, autographed by
Jacqueline Lichtenberg & Jean Lorrh, paperback, 1st printing
(cover art by Don Maitz)

First Channel by Jean Lorrh & Jacqueline Lichtenberg, auto-
graphed by both, paperback, 1st printing

Autographed First Edition hardcovers:

The Opium General by Michael Moorcock

RenSime by Jacqueline Lichtenberg

Tapping the Dream Tree by Charles deLint

Hopscotch by Kevin J. Anderson

War of Honor by David Weber (also signed by artist, David Mattingly)

Hero by Daniel R. Kerns (aka Jacqueline Lichtenberg)

Aesir Trilogy by Steve Martindale

Maiden of the Winds by Janeen O'Kerry

Creature Fantastic (anthology) signed by Carol Hightshoe

Expiration Date by Tim Powers (donated by Massaglia Books)

And we are always looking for more donations. If ANYONE
wants to donate a genre-related item for this worthy cause,
please drop us an email thru our website.

Disclaimer: No guarantee is made that all items will appear at the auction. All autographs are taken on faith, no guarantee is made. All books presented as a First Edition are done so on the best judgment of your Charity Auction Director — no guarantees are made by either LepreCon 30 or Catherine Book, Auction Director. If you have any questions, you may email Catherine c/o the con, or inspect the item prior to Auction. Items will be located in or near the Dealers' Room prior to Saturday's Auction.

ART SHOW

We are planning a guided tour of the Art Show Friday evening hosted by Donato Giancola and Sylvana Anderson-Gish. Our plan is to offer the best of science fiction and fantasy art to the fans of Phoenix. We are asking that artists planning to hang art limit it to originals and limited run prints. Art show panels (a panel is 4'x4' flat brown pegboard) may be reserved for a fee of \$5.00 per panel. 3D artwork can be displayed on 6'x2.5' tables, for a fee of \$10.00 or \$5.00 for 1/2 table. The convention will take a 12% commission on these sales. We will feature a print shop — an area for artists to sell multiple prints of some of their more popular work, with the convention taking 15% commission on these sales. There is no fee to display in the print shop. Artist Setup is Friday: 9am-12 noon.

We will accept Visa, MasterCard, Discover and American Express, as well as cash and checks.

Artists that have reserved space so far include: Ruth Thompson, Larry Vela, Amy Schulz, Betsy M. Mott, L. A. Williams, Gus Talbott, Pam Allan, Sylvana Anderson-Gish, Daniel Cortopassi, Donato Giancola, Jean Jackson, John Kaufmann, Vickie Edwards, Patricia McCracken, Dawn Mullan, Mai Quynh Nguyen, Mark Roland, Allison Stein, Cassondra L. Sweep, Deborah Woods, R. Merrill Bollerud, Ralph J. Ryan, Monika Livingstone, Michele Ellington, Ellisa Mitchell, Nancy Strowger and many more old favorites.

We are anticipating a great art show this year, so be sure to come down and see the pride of a lot of super artists. If you have any

questions, or if you are interested in reserving display space, please contact Ray Gish at 2527 N. Silverado, Mesa, AZ 85215 or call 480-641-3997 or email to RGASAS@aol.com.

DEALERS' ROOM

As usual we are scouring the known universe for merchants of the rare and unusual. Thus far we have acquired Faux Paws, Fantasy —Past, Past and Future, Seems Like Magic, Felitaur Enterprises, Helga's Kin, Moebius Enterprises, Nighthawk Studios, and the Phx Filk Circle.

If you are a trader and wish information you can contact me at 733 E Vaughn Dr., Tempe, AZ 85283-3710 or thru the convention email (lep30@leprecon.org).

GAMING

We have a new and enthusiastic committee member in charge of gaming this year, and he's starting to get things all set up. He's joined the group kind of late, but has experience in this area back from when he lived in Texas, so we're sure the Gaming Room will be just great. If you are interested in running a game at LepreCon, please call Brian Wallrath (in Tucson) at 520-271-3506, or email him at buckwally@earthlink.net.

VELAVISION

You may be wondering "Just what is Velavision?" Velavision is a group that does many things, such as:

Velavision News is the TV version of the daily newzine that you see at most sci-fi conventions. We'll be showing news from the convention, along with video of past masquerades, interviews with artists, writers, special guests, and behind-the-scenes of film making. Look for us on the tv's near Registration and in ConSuite. If you have a convention story you'd like to record for posterity, just come see us in the Velavision room located near Registration.

If you think you're pretty "with it," then you should participate in

“What’s That Byte?,” a competition based on identifying sounds and dialogue that you might recognize from television or movies.

If you’re the talented type who can make something out of nothing then we’ve got a game for you. We’ll set the challenge and provide the materials, you build the contraption and solve the challenge in “Junk Box Wars!” Velavision hosts both games — something fun for all family members.

CONSUIITE/STAFF LOUNGE

Come to ConSuite for a free refreshment or snack to keep you going through the day, and to sit and chat with fellow fen!

And if you volunteer to help the convention, you can gain access to the Staff Lounge, where you can get more sturdy fare (make your own sandwich or taco) or that much-needed morning kick-start coffee... and it’s also a nice place to put your feet up for a few minutes and relax.

PROGRAM BOOK

To advertise in the LepreCon 30 Program Book, please contact us at lep30pb@leprecon.org or call 480-423-0649.

Ad Sizes and Rates:

- Back Cover \$120 (7.5" x 10")
- Inside Cover \$110 (7.5" x 10")
- Full Page \$90 (7.5" x 10")
- Half Page \$50 (7.5" x 5")
- Quarter Page \$30 (3.75" x 5")
- Business Card \$20 (3" x 2")

Formats accepted are PDF, GIF, TIFF, and JPG. Please contact us if you have any questions. Deadline to reserve an ad is April 22, 2004. Copy must be received by April 29, 2004.

Thank you to Gilead for the use of his art on the cover!

LepreCon 30

P.O. Box 26665
Tempe, AZ 85285

www.leprecon.org/lep30

PRSR T STD
U.S. POSTAGE
PAID
PHOENIX, AZ
PERMIT # 4826



45021X4711 C014

