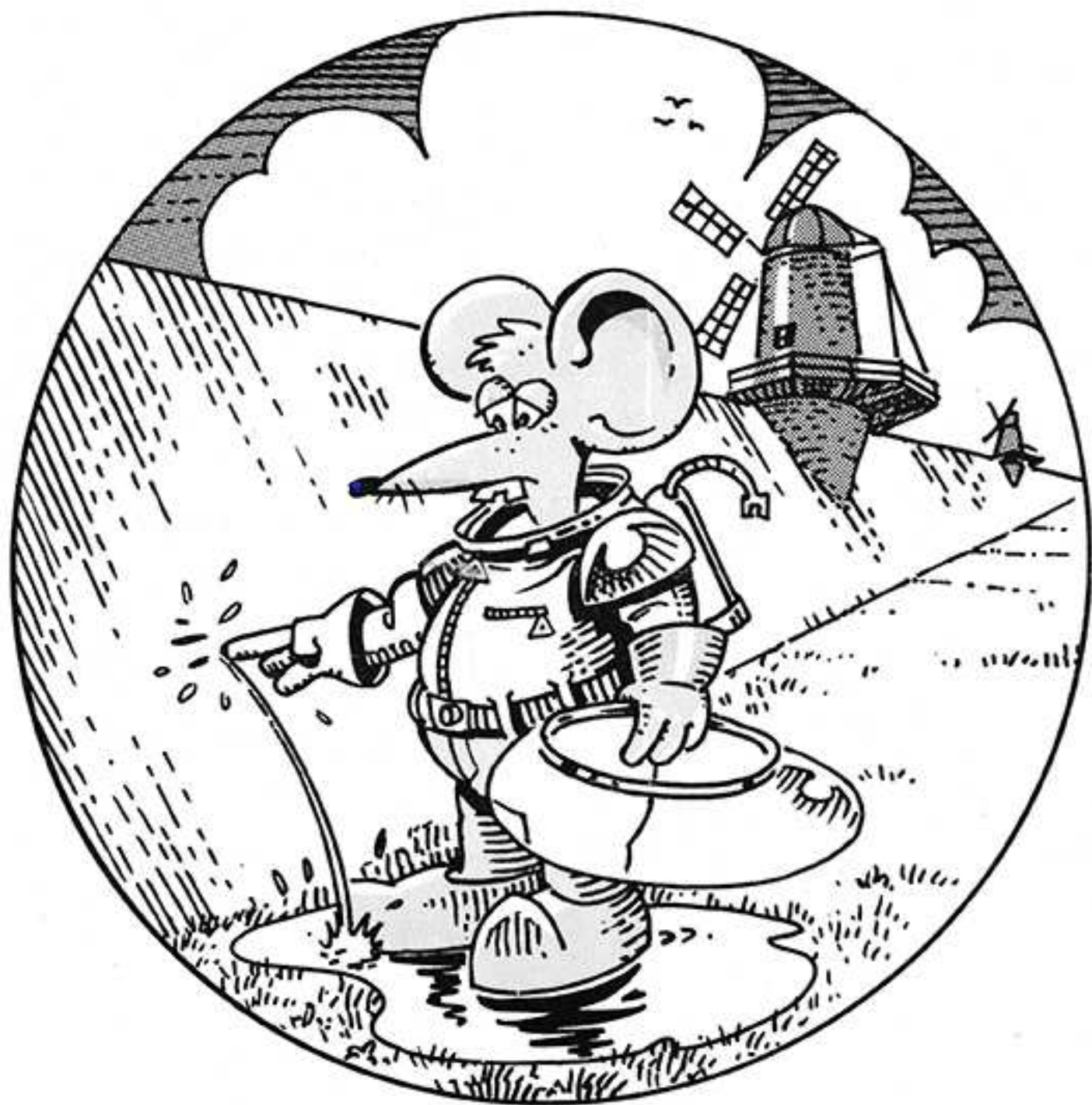


# ConFiction

---

*The 48th World Science Fiction Convention*

*August 23 - August 27, 1990*



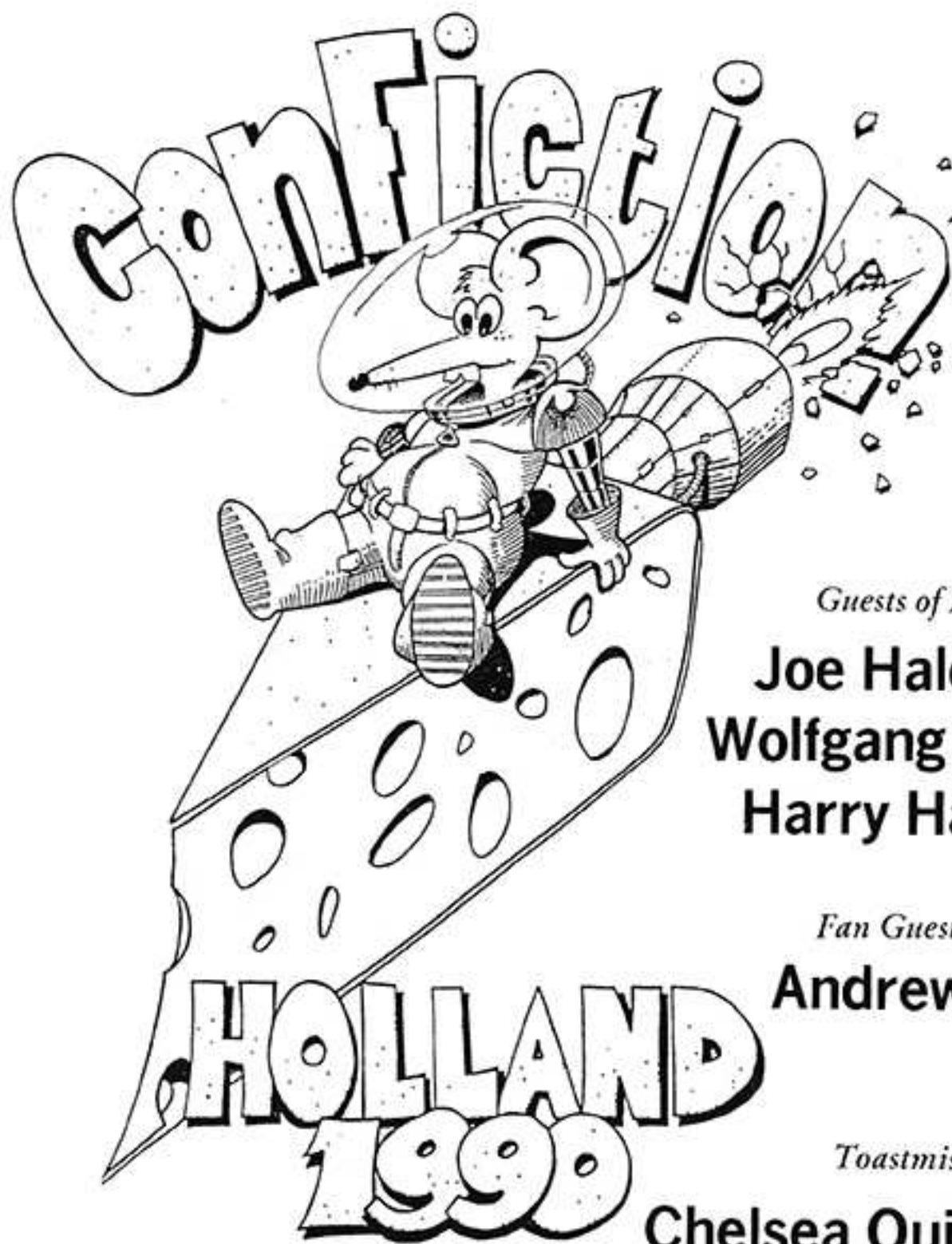
**Progress Report 2**  
**Autumn 1988**

# 48th World Science Fiction Convention

the Netherlands Congress Center

The Hague, Holland

August 23rd - August 27th, 1990



*Guests of Honour*

**Joe Haldeman**  
**Wolfgang Jeschke**  
**Harry Harrison**

*Fan Guest of Honour*

**Andrew Porter**

*Toastmistress*

**Chelsea Quinn Yarbro**

KLM Dutch Airlines has been appointed official carrier for the 48th Worldcon in The Hague.

**WORLDCON 1990 - P.O. BOX 95370 - 2509 CJ THE HAGUE - HOLLAND**

## Welcome to the new members, and hello again to the old crew!

We welcome you back to ConFiction, with this Progress Report # 2. We have hoisted our main sail, for the wind is picking up, as is ConFiction activity. In this issue we present you with the latest update concerning Membership, Advertising, Travel arrangements, news about Programming, Art Show and Dealers information and whatnot.

As usual, the captain and crew of The Roaring Mouse have sailed many a sea to convert the last of the heathens. It brought them to the shores of Budapest in Hungary (regretfully we have to announce that the Blue Danube is no longer blue), Liverpool (did you know that the main lounge of the Adelphi is an exact replica of the main lounge of the Titanic?), and even as far as the exotic coastline of New Orleans (the French quarter made us feel quite at home). Besides meeting old and new friends we spread the word, laced with strong Dutch flavours (like jenever), and this helped the flow of new registrations.

For new and 'old' members alike, here are the latest entries of the Captain's Log!

Johan-Martijn Flaton

### Contents

Welcome back!	5	The WSFS and ConFiction	20
Change of Address	5	Programme Information	22
The Committee	6	ConFiction Video Contest	16
Agent's Corner	25	Weapons and Drugs	16
Membership Information		Fan Comforts	17
Rates	8	Kid Con	17
Methods of Payment	9	1990 Site Selection	
Exchange Rates	9	Vote results	16
Children's Admission	9	The Netherlands Congress	29
Advertising Rates	10	Centre	
Dutch Fandom: An Overview	13	Memberships: Geographical	
Financial Report	14	breakdown per country	31
General Information:		New Memberships:	31
Captain's Log	6	The Flying Dutchman	33
Travel & Hotel Business	16	Art credits: Alexis Gilliland,	
Art Show & Dealers Room	17	Len de Vries and Teddy Harvia	
Mouse Name Contest	17	Cover & Mouse: Len de Vries	
T-Shirt Department	25		

### Advertisers

Aboriginal Science Fiction	2
Phoenix in '93	7
ConFrancisco	11
Fandom Directory	12
Magicon	15
Locus	18-19
Intercon	21
NASFiC ConDiego '90	23
Chicon IV	24
D.C. in '92	26-27
Zagreb in '93	28
Noreascon Three	30
NCSF	23
Contrivance	34
Wilhelm Heyne Verlag	36
SFC	8

## Change of Address

Who hasn't heard of the gruesome fate of captain & crew of The Flying Dutchman? Worse, this could also happen to you! We'd like to avoid this. Therefore we ask you kindly - but firmly - to inform us immediately of any change of address during the next two years. If you are planning to move (or if you have already moved), please notify us as soon as possible. In doing so, you guarantee receiving all upcoming issues of our Progress Reports and other important information about ConFiction. Just write us a short letter, mentioning your membership number (if possible), and both your former and new address to:

*Membership Administration ConFiction*  
*P.O. Box 95370*  
*2509 CJ The Hague*  
*Holland.*

Only then can we guarantee you won't be lost in eternity. It is our firm intention to get any passenger safely to our joint destination, and we'll do our utmost to achieve this. But we need your help too. Thanks for your co-operation!

\*WSFS\*, \*World Science Fiction Convention\*, \*Worldcon\*, \*NASFiC\*, \*Science Fiction Achievement Award\*, \*Hugo Award\* and \*World Science Fiction Society\* are service marks of the World Science Fiction Society, an unincorporated literary society.

\*ConFiction\* is a trade mark of Stichting Worldcon 1990, an unincorporated society, registered by the Benelux Merkenbureau

ConFiction Progress Reports copyright © 1988 by Stichting Worldcon 1990 (ConFiction, 48th World Science Fiction Convention). All rights reverted to contributors.

## Captain's Log

It's been almost a year since we published Progress Report # 1. For Europe and the rest of the world the Dutch Post Office took care of delivering the first issue, but for the United States we received great help from the people behind the Massachusetts Convention Fandom, Inc. Thanks to this group, American fans received their first issue of our Progress Report quickly. We hope to be able to continue this service, as it benefits all groups in fandom.

Since then, a lot has happened. Our organization has got more body and we've gained a lot of knowledge. The overall structure for the convention has taken shape in the meantime. We learned a lot at Conspiracy in Brighton. We learned even more at Nolacon II in New Orleans. It was good to be present in force at Nolacon II. Here we found, that co-operation with other fans is the best possible way to make a World Science Fiction Convention work. Behind our table were not only people from Holland, but also from the United States and Canada (thank you, agents!). A lot of department heads from Nolacon gave us a look behind the scenes and the opportunity both to work and to gain knowledge about the workings of the convention itself.

Thanks to the generosity of MFCI, we were able to host a well-attended party where both members of ConFiction and people interested in Holland were able to talk to us.

We will be attending more conventions throughout the world in the coming year. We hope you'll make use of that opportunity to talk to us and let us know your wishes. Basically we want ConFiction to be *your* convention, and we will listen to whatever you bring to our attention. Thank you for joining us and we look forward to seeing you in The Hague in August 1990.

Kees van Toorn  
Chairman, ConFiction

## The Committee

### board

**Kees van Toorn**  
Chairman  
**Jo Thomas**  
Vice-Chairman  
**Angélique van der Werff**  
Secretary  
**Robert in 't Veld**  
Chief Treasurer

### departments

**Annemarie van Ewijk**  
Fan Activities  
**Karin Bontebal**  
Deputy

**Johan-Martijn Flaton**  
Public Relations  
**John van Duin**  
Agent's liaison  
**Tom Scheelings**  
Deputy, Progress Reports

**Nico Klaasen Bos**  
Operations  
**Martin Hoare**  
**Paul de Leeuw van Weenen**  
Financial Administration  
**Ivo Steyn**  
Deputy

**Larry van der Putte**  
Membership Administration  
**Rob Houwerzijl**  
Deputy

**Jo Thomas**  
Programming  
**Theo Hanou**  
Deputy Programming  
**Gerben Hellinga**  
GoH liaison  
**Thomas Cool**  
**Jim Held**  
**Coby van Hemmen**  
**Henk Kersbergen**  
**Leo Kindt**  
**Remco Meisner**  
**Jeroen Nijenhuis**  
**John Paul Smit**  
**Gerard Suurmeyer**  
**Jan Veldhoen**  
**Hans van Zonneveld**  
Masquerade  
**Lori Meltzer (US)**  
**Ann Page (UK)**

**Len de Vries**  
Art Show

### special

Fans Across the World  
**Karen Naylor**  
Science Fiction Writers of America  
**Ian Watson**  
WSFS Business Meeting  
**Donald Eastlake III**  
E-mail contact (U00254@HASARA5.BITNET)  
**Jacqueline Coté**  
ASFA  
**Ingrid Neilson**

# What A Find!



Vote

## Phoenix in '93 WorldCon Bid

Vote

### Knowledgeable Committee

**Terry Gish** -- Bid Chair  
*Chair of 4 conventions including  
WesterCon 41*

**Randy Rau** -- Bid Treasurer  
*Chair of 4 conventions including  
WesterCon 35 and World Fantasy  
Convention*

**Bruce Farr** -- Vice-Chair  
*Chair of 3 conventions including  
CactusCon, the 1987 NASFiC  
Plus a Cast of Hundreds*

### Co-Operative Facilities

**Phoenix Civic Plaza**  
**Phoenix Hyatt Regency**  
**Sheraton Phoenix**

*All Facilities have hosted several  
successful science fiction conventions  
including the 1978 Worldcon,  
CactusCon, WesterCon 35, WesterCon  
41, CopperCons, and LepreCons, and  
will host the 1988 SnofCon*

### A Sure Combination for a Quality WorldCon

For more information or a \$5 Pre-Supporting membership: Write P.O. Box 26665,  
Tempe, AZ 85282

Name(s) \_\_\_\_\_

Address \_\_\_\_\_

City \_\_\_\_\_ State \_\_\_\_\_ Zip \_\_\_\_\_

Enclosed is \$ \_\_\_ for \_\_\_ Supporting Membership(s) in the Phoenix in '93 WorldCon Bid.

## Membership Information

### Types of Membership

ConFiction offers you two types of membership: Attending and Supporting. A Supporting Membership entitles you to voting rights for the Hugo Awards and for the Site Selection for the 1993 Worldcon (by mail), plus all our Progress Reports, any Newsletter appearing after you have become a member, the Programme Book.

An Attending Membership also gives you the right to attend ConFiction and all the programmes therein, including the World Science Fiction Society Business Meetings.

### Membership Rates

From December 31, 1988 to December 31, 1989, the new rates - payable in US Dollars, Pounds Sterling, Deutsche Marken or Dutch Guilders - are:

	US\$	UK£	DM	DFL
Attending	70	40	130	140
Supporting	28	16	45	50
Children's Admission *	17	9	27	30

\* For children under 14 in 1990. Children under the age of 3 are free admitted.

A Supporting Membership may be converted to an Attending Membership at any time by paying the difference between the Supporting rate and the Attending Membership rate at the time of conversion.

### Conversion before December 31, 1988

If you have a nimble mind and the facility for fast decisions, you may still convert your Supporting Membership to an Attending Membership for the "old" current rates, valid *until December 31, 1988!*:

	US\$	UK£	DM	DFL
Attending	65	37.50	110	120
Supporting	28	16.00	45	50
Children's Admission	17	9.00	27	30

\*\*

### Transfer

A membership can be transferred by a letter signed by the original member, giving the name and address of the new owner (please include the membership number if known/or if available as well). Membership payment cannot, however, be refunded.

# GOOD NEWS

For All SF and Fantasy Readers!

Get all the latest news about what's happening in SF, fantasy and horror in the pages of *Science Fiction Chronicle: The Monthly SF and Fantasy News* magazine. Just as news weeklies bring what's happening in the world to you, so *Science Fiction Chronicle* keeps you in the know on SF and fantasy. And not just news of who bought what and for how much, but more: news of publishers and editors, of mergers and other changes and how it affects you; obituaries, market reports, letters, news of Hollywood, author signings, convention reports with lots of photos, news of books and authors in England, a regular convention calendar, over 400 book reviews a year—more than any other publication in the field—the latest in computer games, audio and videotapes.

And still more: SFC readers get a monthly directory of what's coming up from each publisher with prices, whether books are new or reprint, and much more, before the books are published. If you buy a lot of SF and fantasy, you're sure to find this will save you the cost of your subscription in only a few months. Plus there are occasional columns by Frederik Pohl, Robert Silverberg, Vincent Di Fate and others. Issues also have full color artwork covers and attractive, easy-to-read layout.

*Science Fiction Chronicle* has been a Hugo Award finalist every year since 1980. A single copy is \$2.25; 12 monthly issues by First Class Mail in the US are usually \$27.00. Order now, and get a year for only \$21 (new subscribers only). In Canada, add \$3.00; overseas, add \$9.00. Mail your check to the address below, today!

**SCIENCE FICTION CHRONICLE**  
**P.O. Box 2730**  
**Brooklyn NY 11202-0056**

## Children's admission

ConFiction has two options for admitting children. The first is Children's Admission, which can only be purchased in combination with an Attending Membership. It entitles children under 14 (at the time of the convention) to take part in any activity of ConFiction, and to any publication (to be handed at the convention itself). But they have no voting rights for a Site Selection or the Hugo Awards. If this is desired they must purchase a full Attending Membership.

Children's Free Admission is meant for children under 3 (at the time of the convention). They won't receive any publication, and we won't disturb them with any voting rights for a Site Selection or Hugo Awards.

## Exchange Rates

*Important notice! Please, read this statement carefully in order to understand our policy towards payments because of the fluctuations of the money-market.*

Our membership rates are based upon the current daily exchange rate of the US dollar. Should the dollar drop by more than 10% of the current value (for example on September 1, 1988 \$ 1.00 = DFL 2.03), then we are forced to adjust the rate to match the currency exchange value of the Dutch membership rates. However, if the dollar rises above the limit of DFL 2.20, US memberships rates will be adjusted accordingly. Members who have paid too much during that period will be reimbursed at ConFiction, upon showing a receipt that we will mail out by the end of each year. Fluctuations of less than \$ 5.00, however, will not be reimbursed, as banking fees and administration costs are equal to, or even in excess of \$ 5.00.

## Methods of Payment

**a. Cash** - You can pay cash via the mail by registered letter only. Always state the purpose of your payment in a covering letter. Payments in your local currency can also be made to a representative of ConFiction at conventions, or to our Agents in your country, if present.

**b. Cheque** - Cheques should be made payable to "ConFiction, the 48th World Science Fiction Convention", and sent by registered letter only to our mailing address. We accept personal cheques, bank drafts, and eurocheques.

Our bank account number is: ABN Bank Rotterdam, 50.45.32.928.

**c. Giro postal cheque** - We also accept Giro cheques, made out to: "Stichting Worldcon 1990, Den Haag".

Our Giro account number is: 23 78 84.

**d. International Money Order** - Address your IMO to ConFiction, the 48th World Convention, P.O. Box 95370, 2509 CJ The Hague, Holland. Again, state the purpose of your payment, either on the back of the IMO or in a separate letter, referring to your IMO.

**e. Credit cards** - We accept Mastercard (USA), Access (UK) and Eurocard (Europe) only.

We also accept credit card payment with signature 'on file'. You can write to us and authorize us to charge your card for an amount specified by you in a letter with your signature, card number and date of expiration. Or use the form below.

Please note: we do not accept Visa or Amex.



## Membership payment

All membership payments must be made payable to:

ConFiction  
P.O. Box 95370  
2509 CJ The Hague

KLM Royal Dutch Airlines has been appointed Official Carrier for the 48th World Science Fiction Convention in The Hague. This guarantees you the best air transport by our national Airline. KLM Offices around the world will gladly assist you with your travel arrangements to the Netherlands.

# Advertising

As usual our Advertising Rates are split between fan rates and professional rates. They are based on print run and publication costs of our Progress Reports.

## Copy

All copy should be camera ready, black on white. If not, then any work process required (tones, screens, reversing out etc.) will be invoiced to the advertiser at cost.

Our standard printing size is DIN A4 (297 x 210 mm) and we have trimmed down the copy image sizes to allow for margins. So please feel free to fill the sizes.

## Payment

We request that payment accompany advertisement copy. For methods of payment see under *Membership payment* on page 9

## Publication dates

Progress Report # 3 will be published on July 1, 1989. Therefore the deadline for receipt of your booking and copy is May 1st, 1989.

Progress Report # 4 will be published on March 1, 1990. Therefore the deadline for receipt of your booking and copy is February 1, 1990.

In Progress Report # 3 we will announce our advertising rates for the Programme Book.

## Discounts

Yes, discount rates are available if you book an identically-sized advertisement in Progress Report #3 and/or # 4 . These need not be the same copy, it's the size that counts!

For an identically-sized ad in Progress Report # 3 you'll get a discount of 10%, and for running the same-sized ad in Progress Report # 4 you'll get a further 10% discount.

Moreover, if you book space *now* in Progress Report # 3 or # 4 the current rates will remain valid and future increases will not apply to you.

## Fan Rates

	US\$	UK£	DM	DFL
Full Page 190 x 275 mm	80	45	160	160
Half Page 190 x 136 or 94 x 275 mm	40	25	80	80
Quarter page 94 x 136 mm	25	15	50	50

## Professional Rates

	US\$	UK£	DM	DFL
Full Page 190 x 275 mm	160	85	300	300
Half Page 190 x 136 or 94 x 275 mm	90	50	180	180
Quarter page 94 x 136 mm	50	28	100	100

## Address

If you have any questions about technical matters, rates or deadlines, or if you want to know more about the Worldcon itself and possibilities of advertising, merchandising or sponsoring events, please feel free to enquire. Our address (for enquiries and copy) is:

ConFiction  
Advertising Department  
P.O. Box 95370  
2509 CJ The Hague



EUROCON 1989  
15° ITALCON

il Medioevo nel Fantastico

Repubblica di San Marino  
18-21 Maggio

Attending, US\$ 40.

Supporting and Children (under 14), US\$ 20

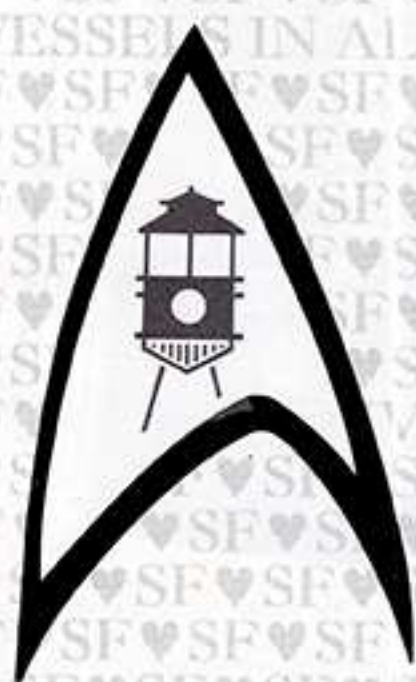
Republic of San Marino (Italy), May 18-21, 1989

Segreteria Organizzativa c/o Adolfo Morganti, Viale Cappellini n. 14 - 47037 Rimini - Italia





# ConFrancisco



## WorldCon Bid 1993

Pre-supporting membership \$5.00 - includes kazoo

3317 A Julliard Dr., Suite 179 Sacramento, CA 95826

From its beautiful full color cover, to over 20,000 names, addresses and telephone numbers, the **FANDOM DIRECTORY** is one of the handiest source books available!



Cover by Dave Garcia

## TENTH ANNUAL EDITION

**\$12.95** plus shipping

**COMPLETELY  
UPDATED AND  
REVISED**

Friends, organizations and new customers from ALL OVER THE WORLD are in the pages of the **FANDOM DIRECTORY**, with over 500 pages of information, including indexes to fan clubs, fanzines, and fan gatherings.



**FANDATA COMPUTER SERVICES**  
7761 ASTERELLA COURT  
SPRINGFIELD, VIRGINIA 22152

**(703)644-7354**

If you are a dealer, Publisher, Publicity agent, collector, or a fan looking for fellow enthusiasts, the **FANDOM DIRECTORY** is for you! Whether you are interested in nuts-and-bolts Science Fiction, comics, media, or pure fantasy, you cannot afford to be without this valuable tool.

**COVERING:** Science Fiction, Fantasy, Horror, Humor, Comics, Star Trek, Star Wars, Animation, Space Interests, Costumes, Filking, Props, Superheroes, Fantasy Games, Pulp, Sword & Sorcery, Dr. Who, Fan Art, Movie Material, Darkover, Old Time Radio, Collecting and many related fandoms!

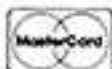
**PLUS:** A listing of Research Libraries of Interest to Fandom — where all those manuscripts and rare published works have been donated, and a **RETAIL STORES INDEX** which lists over 3500 retail outlets which cater to fans and collectors.

**FANDATA Publications 7761 Asterella Ct Springfield VA 22152-3133**

_____ Fandom Directory 10 ('88)	\$12.95	_____
_____ Fandom Directory 9 ('87)	\$5.95	_____
_____ Fandom Directory 8 ('86)	\$5.95	_____
_____ Fandom Directory 6 ('84)	\$5.95	_____
_____ Writer's Yellow Pages (H)	\$19.95	_____
_____ Trek Menor. Price Guide	\$14.95	_____
_____ Overstreet Guide #18 (H)	\$17.95	_____
_____ Overstreet Guide #18 (P)	\$12.95	_____
_____ Overstreet Guide #17 (P)	\$5.95	_____
_____ Price Guide Companion #1	\$4.95	_____

Shipping (\$3.00 outside U.S.) \$2.00  
TOTAL \_\_\_\_\_

NAME \_\_\_\_\_  
Address \_\_\_\_\_  
City \_\_\_\_\_ State \_\_\_\_\_ Zip \_\_\_\_\_



**CHARGE TO MY:** (Please Check One)

**MASTERCARD**

**VISA**

ACCOUNT  
NUMBER

\_\_\_\_\_

MASTERCARD  
INTERBANK NUMBER

\_\_\_\_\_

CARD EXPIRES

MO. YR.

Signature \_\_\_\_\_

# Fandom in the Nether regions

*As a first step in getting to know Holland a little better - we are, after all, a very small nation! - we'd like to give you a glimpse of Dutch fandom. And who is better to introduce them to you than a founding fan, and the head editor of Holland's oldest clubzine, Annemarie van Ewijk (who is also handling the fannish business at ConFiction).*

Fans there have always been, as long as speculative fiction has been written and published. And so it was in the Netherlands. But for a long time they remained private fans, not sharing their interests with others, simply because they didn't know where to find them.

It was not until after WW II, that modern science fiction, indeed even the name itself, became known in this country, and Dutch fandom started to put out its first shoots. Slowly at first - for finding kindred souls wasn't easy. A fan might nose out another fan in the same town by way of a mutual fannish contact in the USA! Even then fandom was confined to private visits, letters, and much, very much reading.

## Large oaks

But progress was in sight. In 1965 Forry Ackerman, being in the neighbourhood anyway because of the London worldcon, came over for a visit. One of his "foreign correspondents" in the Netherlands, P. Hans Frankfurter, decided to throw a party. Not only that, but he also arranged for a number of students to meet Forry at the station in monster outfits, and he really outdid himself with a festive reception at the Stedelijk Museum of Amsterdam, having told all his sf friends to come.

And come they did! They flocked to see a real live fan in the flesh. Some of Forry's fannishness must have rubbed off. For there and then it was decided to meet again. And at the next meeting founding fathers P. Hans Frankfurter, Albert Taal and Leo Kindt conceived the NCSF, the "Nederlands Contactcentrum voor Science Fiction". And that was that. Since then Dutch fandom has never looked back.

## Emerging

In 1966 the first issue of *Holland-SF*, the magazine put out by NCSF, appeared. It is still going in 1988, in its 22nd year. Also in 1966, NCSF held its first convention, then still called "congress", with poets, authors and speeches. Fandom started to discover itself. In 1970 Kees van Toorn started his first Dutch fanzine *Atlas*. In 1971 Perry Rhodan fans got together to protest the threatened mothballing of the series, and founded Terra. A magazine soon followed.

Conventions bloomed. Modest one-day cons to begin with, but soon Terra's annual Perry Rhodan daycon had 600-800 visitors, while NCSF started weekend cons in 1974. Beneluxcons (as they were called) alternated annually between NCSF and Flemish fandom in Belgium.

In 1976 Rob Vooren instituted the King Kong Award, for the winning story in a Benelux story contest. In 1977 King Kong started its own annual contest for original Dutch sf, from story up to novel-size. The award is accompanied by a very welcome cash prize, financed from donations solicited from fans, publishers and unsuspecting outsiders alike.

## Naturally

Once started, fans behaved as is their wont. Fanzines came.. and went. Fledgling authors and artists graced their pages and tried to strike out on their own. Some made it too.

Busy bibliographers plied their index cards and in 1978 Gorremans, Spaink and Gaasbeek got the first comprehensive bibliography of science fiction in the Netherlands, *Fantasfeer*, published by Meulenhoff - the most prestigious publishing house for sf in this country.

Following the trends of fandom, or reinventing them all over again, small semi-professional publishers popped up like daisies. Let's just name a few. *INFO* by Robert Zielschot, bringing novellas or short novels in a digest format, and then striking out on a tangent in 1977 with *ESSEF-magazine*, that stressed sf-comics but foundered after a two-year run. In 1977 Kees van Toorn started *ORBIT*, a colour quarterly that is commercially available but still a fannish labour of love. *FANTASTISCHE VERTELLINGEN* by Remeo Meisner started out as a fanzine in 1979 but soon branched out as a small publisher for short novels or short story collections.

## Netherfandom today

Most of us are still in it, and lots of new fans have joined us in the meantime. NCSF confidently looks forward to celebrating its silver jubilee when ConFiction rolls around. Terra thrives and still holds its large annual Perry Rhodan daycon and recently a small but lively Star Trek fanclub has joined the ranks.

Holland can be traversed by car in just a few hours. This makes meetings and cons that much easier to attend, too. Terra has regular meetings and social events for members. The Flying Dutch meet every month and NCSF turns its two annual business meetings into minicons with a book room, movies and a banquet... at the nearest restaurant.

A monthly sf-pub in The Hague is run indepen-

dent of clubs, preferences or fannishness; sometimes one can actually hear a discussion going on about sf. The pub has proved a good hunting ground for roping in future ConFiction helpers or collecting contributions for the King Kong Award.

Holland is a indeed a small country. So it seems only natural that we should also look at whatever lies over the border. Dutch fans have built up international contacts in fandoms all over the world, from Japan to Australia, from the USA and UK,

and from to Poland to Poughkeepsie. They travel to distant cons, correspond with fans in out-of-the-way places, participate in apazines or produce their own quirky personalzines - who hasn't heard of *Shards of Bable?* And all in English, for many Dutchmen - especially fans - have English as their second language.

Netherfandom is very much alive today. We gave some inkling of that when we went for the Worldcon bid for 1990. Now come and see for yourselves how fans can thrive in the Nether regions.

## Financial Report ConFiction

Fiscal Year 1988 - till August 1 1988 (unaudited) - in Dutch guilders

Inventory	3.804,00
Cash	0,29
Cash foreign (DFL)	6,02
Bank ABN (DFL)	2.228,79
Bank (US\$ in DFL)	32.654,03
Bank (UK£ in DFL)	35.235,11
Bank (Can.\$ in DFL)	925,00
Giro account	10.501,91
Accounts receivable	4.084,85
Interests/fees	-/- 0,41
<b>Total assets</b>	<b>89.439,59</b>

### Expenditures

Legal fees/registration	1149,00
Administration	9,80
Banking fees	926,30
Office supplies	140,75
Copiers	221,73
Promotion materials	1.785,00
Legal fees	60,00
Postage	538,75
Travel expenses	4.298,46
Software	600,00
Transport fees	426,50
General printing costs	396,00
Printing costs Progress Reports	3.869,00
Type setting	313,20
Rent equipment	2.000,00
Other	14,21
<b>Total</b>	<b>16.748,70</b>
<b>Liabilities</b>	
Congress reservation '85	3.041,22
Congress reservation '86	19.723,19
Congress reservation '87	24.025,00
<b>Total Expenditures/liabilities</b>	<b>63.538,14</b>

### Income

Revenues Conspiracy '87	68.708,47
Attending memberships	19.969,15
Supporting membership	5.076,99
Presupporters 1985	1.710,00
Presupp. 1986	9.735,00
Presupp. 1987	5.995,00
Presupp. via agents 1985	1.740,00
Presupp. via agents 1986	600,00
Presupp. via agents 1987	824,56
Est. Supp. membership 1987	158,40
Est. Att. membership 1987	18.371,95
Loan NCSF	1.500,00
Loans bidding committee	18.388,21
Short term loans	100,00
Advertisements	100,00
<b>Income</b>	<b>152.977,73</b>
<b>Expenditures</b>	<b>63.538,14</b>
<b>Total Assets on 01.08.1988</b>	<b>89.439,59</b>

# *MagiCon / Orlando in '92*

## *Come, Share The Magic!*

Dost Thou Seek A Magical Worldcon?  
Verily, Orlando In '92 Will Grant Thy Every Wish

### **With Great Facilities**

**The Orange County Convention & Civic Center:** 388,000 Sq. Ft. of meeting and exhibit space, almost all on one level; State-of-the-art in every area, from lighting to handicapped access to security.

**The Peabody Hotel:** Our headquarters hotel, directly across the street from the Convention Center; 58,000 Sq. Ft. of additional function space; four restaurants; breathtaking decor; professional child care; trained mallard ducks.

### **With Great Accomodations**

Over 4,000 rooms blocked at close-at-hand hotels.  
Wide range of room rates.  
Shuttles to all Orlando attractions.  
Free parking at all hotels.

### **With A Great Committee**

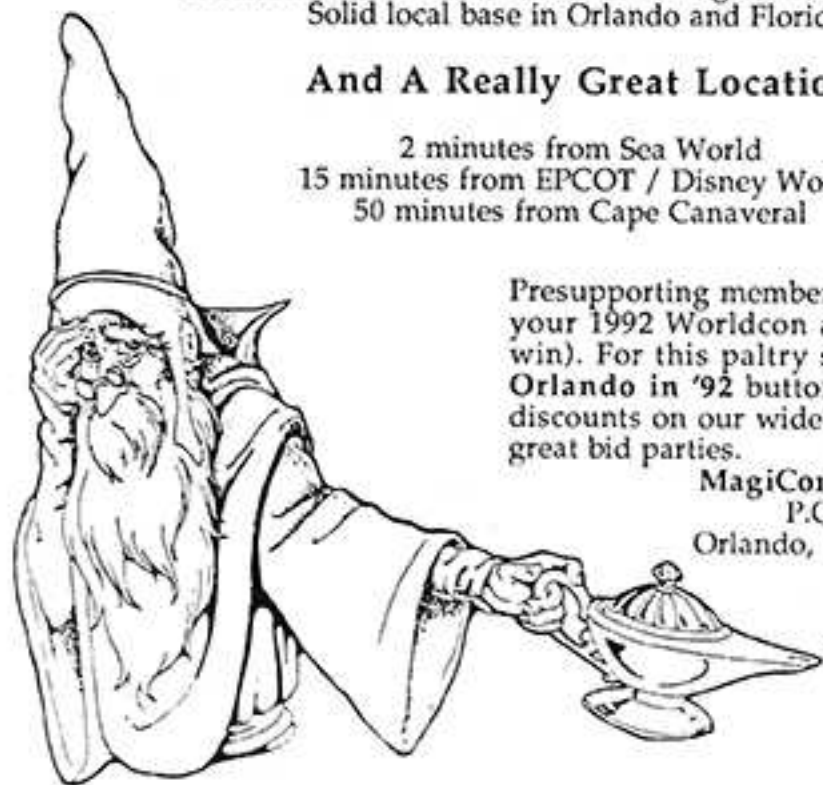
Experienced in high level posts at past Worldcons.  
Members have founded and chaired regional & local cons.  
Solid local base in Orlando and Florida.

### **And A Really Great Location**

2 minutes from Sea World  
15 minutes from EPCOT / Disney World  
50 minutes from Cape Canaveral

Presupporting memberships are \$5.00 (Credited toward your 1992 Worldcon attending membership after we win). For this paltry sum, you receive a **MagiCon / Orlando in '92** button, a subscription to our bidzine, discounts on our widely acclaimed T-Shirt, and a lot of great bid parties.

**MagiCon / Orlando in '92**  
P.O. Box 621992  
Orlando, Florida 32862-1992



# General Information

## Travel & Hotel Business

In our first Progress Report we proudly announced we had come to an agreement with Ask Mr. Foster/Group Events in Stamford, Con. for all air and ground transportation as well as hotel arrangements for the American fans. Due to a fatal accident with the owner of this franchise of Ask Mr. Foster/Group Events all contracts had to be reconsidered - including ours. We know that it is of vital importance to the fannish community to have optimal service in the field of transportation. This is especially important for the fans on the North American continent. We want hotel booking form to go early, we want your travel plans to be known in an early stage and we want an extremely reliable travel agent. We looked hard, listened to suggestions and negotiated with a great number of large and small companies.

The result is a new company, based in New Jersey with the appropriate name Holland Approach Inc. The company is actually run by a very active Dutchman who has been in the United States for quite some time but frequently visits Holland to keep up with the latest developments on air- and ground-transportation as well as hotel information. Holland Approach will be the official American travel agent for ConFiction in the United States. A special package will be offered to all members of ConFiction in a later stage and a toll-free 800-number will be made available at the end of 1989 and in 1990 for questions and information.

Holland Approach will also be responsible for the distribution of hotel rooms in the Hague for the American fans. This will be done in coordination with Convention Travel International in the Hague. This company is the official hotel liaison for the rest of the world. We will have detailed hotel information in Progress Report # 3. Holland Approach will be present at Noreascon III, the 1989 World Science Fiction Convention, and there will be a special mailing to all American members of ConFiction with the suggested package to come and visit ConFiction.

Similar packages may be offered by KLM - Royal Dutch Airlines, our official carrier in various countries. You should check with their offices worldwide. Convention Travel International may make special tours available in Holland and on the continent if there is enough interest shown by visitors. Hotel booking forms will go out at the end of 1989 and we will do our best to make it possible for fans all over the world to plan their journey to Holland in an early stage.

## ConFiction Video Contest

For the holiday hobbyist or the do-it-yourself film buff, ConFiction offers you a chance to go public!

We offer you an exclusive ten minutes of air time in which to enthrall your fellow fans with fantastic, freaky, fabulous, funny fables or hilarious, harrowing, hair-raising horror.

You create the video, we'll provide the appropriate apparatus with which to show it (VHS, Betamax or V8). And remember - we've a closed TV-circuit all over the Centre! Translation of NTSC to PAL is available at cost. Our only specifications are: a maximum duration of 10 minutes, and the film must be suitable for family viewing. Entries will be judged by a panel, and the winner will receive an award. For further information, please write to ConFiction, P.O. Box 95370, 2509 CJ The Hague.

## Weapons and Drugs

Just a reminder to let you know that the possession of *any* drug in Holland is illegal and punishable. We also want to follow the general no-weapons policy of major conventions all over the world.

When more details of the Masquerade (i.e. transport, customs) are available we'll also let you know in good time how to deal with weapons that you want to use for that special occasion.

## 1990 Site Selection Vote Results

Complying with the rules of the World Science Fiction Society we publish the results of the 1990 Worldcon Site Selection below, as announced during an official Business Meeting of the WSFS at Conspiracy, on Sunday, August 30th, 1987.

	by mail	on site	total
Holland	98	712	810
Los Angeles	128	402	530
No preference	5	9	14
None of the above	1	5	6
Write-ins *	0	3	3
Blank/spoiled	0	10	10
<b>Total</b>	<b>232</b>	<b>1,141</b>	<b>1373</b>

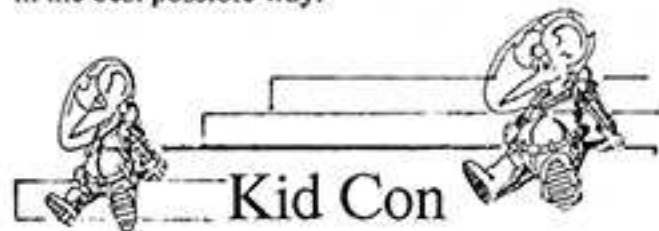
\* The write-ins were Jack Herman, Karnak in 1990 and Minneapolis in '73.

## Art Show & Dealers Room

In New Orleans at NolaCon II we distributed a flyer to both the art show and dealer room participants. We asked people to let us know whether or not they would like to be put on a special mailing list for either of the two events.

We have not yet started allocating space to artists or dealers nor have prices been set for panels or tables. This will happen after Noreascon III. We urge all dealers and artists to write us - if they are interested to be put on the special mailing list and if they want to come to ConFiction. We are currently working with the Customs and Tax department to be able to provide you with detailed advice on the preparation of paperwork to import books and/or art as well as ways to ship your material into the Netherlands. Detailed information on this process and the way how to handle both the import and export side of your visit as a dealer or an artist to ConFiction will be mailed out as soon as it becomes available to all interested parties who have been put on our special mailing list.

Take the opportunity to get in touch with fans and possible customers at ConFiction. We hope we can welcome you as a dealer or an artist at a convention where you can mix business with pleasure in the best possible way.



### Kid Con

Kids from 4 to 12 years will have their own complete Con programme in one of the halls of the Centre. Activities include participatory group events (performing a theater play, for instance), games, a magician's show, story-telling, drawing, painting, as well as organised trips to places of special interest for children.

More information in Progress Report # 3, to allow you to determine which programme option is best suited for your child.

## Mouse Name Contest

Remember the bidding of the Dutch Committee for the 1990 Worldcon? Those were the days... Anyhow, when Len de Vries designed our mouse mascot the poor critter had no name whatsoever. So we started a contest in our bidzine High Tide and asked you lot to come up with a fancy name. A lot of you did. From *Fenwick* (Perry Willams) to *Squeaky* (Lucia Catts), to *Hamsterdam* (Forry Ackerman), to *Harry Fiawol* (Heidi v.d. Vloet), to *Ford* (Robert Sachs). In the end we decided just to go silly. So here are the results. Runners-up are *Cosmo/Cosmos/Cosmouse* from Lloyd Penney, and *Captain Fanderdecken* from John Brunner. Both of them are entitled to a piece of real Dutch cheese at ConFiction. The winners are, however, Alix Jordan & Linda Bowland with *Isaac Asimouse* (the good doctor has whiskers too!). We'll send you the original painting donated by Len de Vries.

## Fan Comforts

This section of Fan Activities deals with a number of very varied subjects. We will try to give fans from abroad much needed information on how to get about in Holland - shopping, money, meals and sightseeing, to name a few. We will also try and anticipate special wishes or requirements that fans who visit ConFiction may have. We have been busy in the background, but some of the information we need must come from you. We urge ConFiction members who foresee the need of special assistance at the convention because of physical handicaps, to tell us as soon as possible. We'll like to have some idea of the nature of the assistance wanted, and the number of people who may require, say, folding wheelchairs and/or pushers, or seating in the front rows, or programme information on cassettes.

We are aware that physical handicaps are as individual as the people who have them, and that the only way to arrange for your needs adequately is to have your individual requirements in, as soon as possible.

More information on handicap access will follow in Progress Report # 3, as well as hotel information. In that issue we'll also enclose a Questionnaire. In the meantime, do write to us.

## Upcoming World Science Fiction Conventions

1989  
Noreascon III  
Box 46  
MIT Branch PO  
Cambridge MA 02139 USA

1990  
ConFiction  
P.O. Box 95370  
2509 CJ The Hague  
Holland

1991  
Chicon IV  
P.O. Box A3120  
Chicaco  
IL 60690 USA

# LOCUS

THE LEADING NEWSPAPER OF THE SCIENCE FICTION FIELD

## LOCUS COVERS THE WORLD OF SCIENCE FICTION

### EVERY MONTH:

- LOCUS brings you the most comprehensive and up to date coverage of the science fiction field available.
- A complete list of all the Science Fiction/Fantasy/Horror books published in English.
- Reviews of all the important books and short fiction that will come out in the next three months.
- Articles on all that is going on all over the world in science fiction today - from interviews with leading authors to an agent's eye view to media reports.
- Reports from all of the major conventions.
- Hundreds of photographs, of authors, book covers, and conventions.

### EVERY TWO MONTHS:

- A complete list of upcoming conventions throughout the world: what, where, when, and who to contact - up to and including the 1991 Worldcon.

### EVERY THREE MONTHS:

- Complete list of all English language books scheduled for the next six months.
- Reports from dozens of countries including the USSR, China, Japan, France, Poland, on what's going on in science fiction, with reviews of non-English books, convention coverage, and a list of publications in many languages.

### EVERY YEAR:

- LOCUS brings you a complete review of what has happened in the previous twelve months.
- A summary of books, magazines, and cinema.
- A comprehensive analysis of the field.
- And the LOCUS recommended reading list.





## FOR OVER TWENTY YEARS -- AND A 13 TIME HUGO WINNER!

"There is no way for anyone fascinated by science fiction to get out of reading *LOCUS*. It is the Time magazine and Walter Winchell of the field. It misses nothing, tells everything, keeps you abreast and in the swim, and I wouldn't be without it - And I won't be for I have put the money down for a lifetime subscription." **Isaac Asimov**

"I doubt that this field would have the coherence and sense of community it does without the steady, informed presence of *LOCUS*." **Gregory Benford**

"*LOCUS* is the science fiction newsletter. No one who is interested in the field should be without it." **Ben Bova**

"*LOCUS* is where I look first for shop talk - it is the real trade paper of science fiction. There have been times when I first heard through *LOCUS* (not my agent) that a new book of mine is on the stands." **Marion Zimmer Bradley**

"Without a doubt, the single most valuable periodical within the SF community; a labor of devotion, a bulletin board, a monument." **Algis Budrys**

"*LOCUS* is the only periodical that I read cover to cover - including adverts!" **Arthur C. Clarke**

"*LOCUS* has always been the thing you needed if you wanted to know what was going on in science fiction." **Hal Clement**

"Anyone who who wants to know what has happened in modern SF over the last decades must turn to *LOCUS*, however critically, to find out." **Samuel R. Delany**

"*LOCUS* is the one indispensable source of information for every reader and writer of science fiction. That's why I have a lifetime subscription." **Lester del Rey**

"*LOCUS* has been the market-report source, back-fence gossip, obituary and accolade register of the science fiction world. It is the Delphic yenta of SF-dom, and an awesome testament to the high reportorial skills of Charlie Brown. It is a limitless source of what's-going-on-for everyone in the genre." **Harlan Ellison**

"Without *LOCUS* we would be groping around in the dark. But *LOCUS* is there, shining light into all the dark corners." **Robert A. Heinlein**

"*LOCUS* has been a pioneering publication and a consistently high performer. This little magazine sets the standards for accuracy and scope in its reporting of news in the science fiction and fantasy publishing fields, and for level-headed interpretation of that news. I read it regularly." **Fritz Leiber**

"As one who is notorious for his dislike of the social aspects of the SF world, I can say fairly that *LOCUS* is the only journal I know which retains a clear-sighted and impartial perspective on it. It's the only SF journal that

I see regularly or would wish to see regularly." **Michael Moorcock**

"Anyone whose interest in SF goes beyond reading it to wanting to read about it should be aware of *LOCUS*." **The New York Times**

"Charlie Brown has been a close friend of mine for nearly twenty years, so anything I might say is suspect - but *LOCUS* is the most important publication in science fiction today." **Frederick Pohl**

"*LOCUS* is indispensable." **Robert Silverberg**

"I think it's the most pertinent magazine I get, and I'm very grateful that I subscribed." **Peter Straub**

"...the science fiction trade magazine." **The Wall Street Journal**

"It's somewhat more than twenty years since I first found a friend in Charles Brown, back before he became Charles N. Brown, publisher of *LOCUS* and keeper of our records and our memories and our dreams. The soul of science fiction? Maybe not quite. We might exist without him, but life would never be the same." **Jack Williamson**

"For professionals and devotees alike, *LOCUS* is the world's most important publication about science fiction." **Roger Zelazny**

USA	CANADA	EUROPE & SOUTH AMERICA	AUSTRALIA, ASIA & AFRICA
2nd class	2nd class	Sea mail	Sea Mail
\$28.00 for 12 issues	\$32.00 for 12 issues	\$32.00 or £18.00 for 12 issues	\$32.00 or £18.00 for 12 issues
\$52.00 for 24 issues	\$59.00 for 24 issues	\$59.00 or £33.00 for 24 issues	\$59.00 or £33.00 for 24 issues
1st class	1st class	Air Mail	Air Mail
\$40.00 for 12 issues	\$40.00 for 12 issues	\$50.00 or £28.00 for 12 issues	\$55.00 or £31.00 for 12 issues
\$75.00 for 24 issues	\$75.00 for 24 issues	\$90.00 or £51.00 for 24 issues	\$100.00 or £56.00 for 24 issues

All subscriptions are payable by check, or money order. Payment must be drawn on either a U.S. (\$) or British (£) bank. Canadians should use postal money orders in U.S. dollars.

Send payment to: **Locus Publications, P.O. Box 13305, Oakland, CA 94661.**

Enclosed is: \$ \_\_\_\_\_ or: £ \_\_\_\_\_  New  Renewal

NAME \_\_\_\_\_

ADDRESS \_\_\_\_\_

\_\_\_\_\_

\_\_\_\_\_

# The World Science Fiction Society and ConFiction

Donald E. Eastlake, III

The World Science Fiction Society (WSFS) is the organizational framework that includes the administration of the Science Fiction Achievement Awards, known as the Hugo Awards, and the selection of the sites and committees for World Science Fiction Conventions, known as Worldcons.

WSFS has a Constitution which defines how this works, but WSFS is not incorporated, has no overall Officers and no centralized place of business. Day to day authority is primarily in the hands of the future Worldcon committees, particularly the immediately upcoming Worldcon. In fact, the membership in WSFS is currently defined as all persons who have paid membership dues to the upcoming Worldcon. Everyone who is at a Worldcon as an attending member has a right to attend the WSFS Business Meeting there and to vote on business. These Business Meetings can change the Constitution, adjusting the way WSFS works, although such changes must be approved in two successive years before they take effect.

## Committees

From time to time the Business Meeting creates temporary committees, usually to study possible changes in the rules for site selection or the Hugo Awards. In addition, WSFS does have one permanent committee, the Mark Registration and Protection Committee. As you might guess, the job of this committee is to register and protect the "trademarks" used by WSFS such as "Hugo Award", "Worldcon", "WSFS", etc. The committee maintains a fixed address at P.O. Box 1270, Kendall Sq. Station, Cambridge, MA 02142 USA. You should send to this committee any complaints about unauthorized groups using the WSFS marks, or sufficiently similar other marks, so as to cause confusion.

Besides the job of running the Worldcon, the WSFS Constitution gives each local Worldcon committee the responsibility of administering the Hugo Awards for work done in the previous year, administering the Worldcon site selection for the Worldcon to be held three years in the future, and holding a WSFS Business Meeting.

## Hugo Awards

ConFiction will be administering the 1990 Hugo Awards which will be for work done in 1989. This involves sending out nominating forms around the beginning of 1990 and then final ballots based on the nominations received and the wishes of the nominees (who may withdraw). The Hugo Awards are unusual in that they are selected by popular vote. Members of both ConFiction and Noreascon III will be able to nominate but only ConFiction members may vote in the final ballot to determine the Hugo winners.

A Worldcon is also permitted to create one additional Hugo award category if it believes there are exceptional reasons for doing so. Nominations and voting for such an additional Hugo must be by the same procedures as for the regular Hugo Awards listed in the Constitution. ConFiction has not yet decided whether or not to create such an additional Hugo category (Worldcons may also give "special" awards that are not determined by nominations or popular vote, but these are not Hugo Awards).

The details of the Hugo Awards are in Article II of the WSFS Constitution which will be distributed with the nomination forms.

## Site selection

ConFiction will also be administering the Site Selection for the 1993 World Science Fiction Convention. Any committee that is outside of North America or in the Western Zone of North America and meets the other requirements in the WSFS Constitution is eligible. The required paperwork must be filed with ConFiction before the end of the previous Worldcon, Noreascon III.

Site Selection ballots will be mailed to members of ConFiction who are the only ones eligible to vote. Voting will also be possible at ConFiction on Friday and Saturday with the polls closing at the traditional 6 pm Saturday. An additional fee must be paid when voting but in return the voters are automatically made supporting members of the 1993 Worldcon, whoever wins, and are guaranteed the right to convert to attending membership for a

limited amount of money if they do so promptly. Supporting members get convention publications and can vote on the Hugo Awards and site selection. Attending members can in addition attend the Worldcon and the Business Meeting.

### NASFiC

The WSFS Constitution also provides for a NASFiC (North American Science Fiction Convention) when the Worldcon is outside of North America. Should the selected 1993 Worldcon site be outside of North America, a 1993 NASFiC selection will be administered by ConDiego, the 1990 NASFiC.

### Business Meeting

Finally, ConFiction will run a WSFS Business Meeting. This meeting will be held in several morning sessions so as to reduce interference with attending the programme or working on the conven-

tion by those attending the Business Meeting.

The Business Meeting will consider any Constitutional amendments passed for the first time the previous year, to determine if they should be ratified and made part of the Constitution, as well as any new business, including resolutions, new Constitutional amendments, committee reports, and elections to the Mark Registration and Protection Committee. In addition, there will be financial reports from Worldcons, a chance to ask them questions, and the official announcement of the site of the 1993 Worldcon.

If you are interested in where WSFS, the Worldcon, and the Hugo Awards are going, you should study the WSFS Constitution, Business Meeting rules, and the upcoming business as they will be published by ConFiction. Then attend the Business Meeting where your voice can be heard and your vote will count. If you follow the Business Meeting rules, you can even draft and submit your own resolution or amendment to the Constitution.

# INTERCON 89

## AUGUST 4TH - 6TH 1989

### OSLO, NORWAY (NORCON 8)

AMERICAN GoH  
BRITISH GoH  
NORWEGIAN GoH

SAMUEL R. DELANY  
TO BE ANNOUNCED  
TOR AGE BRINGSVAERD

Extensive 2-1/2 track program of talks, panels, films, fannishness and virtually anything else you may expect to find at a con. At least one third of the program will be in English and all SCANDIFANS speak English.

Private accommodation and guided tours of Oslo will be available for those who book in advance.

**REDUCED RATES FOR NON-SCANDINAVIAN RESIDENTS** (*not speaking Norwegian/Swedish/Danish*). - £5/\$9 until January 1, 1989. - £10/\$18 afterwards and at the door.

**CONTACT ADDRESS: HEIDI LYSHOL, MARIDALSVN. 235 A, N-0467 OSLO, NORWAY**

# All Points Bulletin

from the Programme Department

Our Programme Committee is in full swing. Ideas (and heads) are buzzing. Plans are rolling. We're rearing to go.

How about you?

This is an All Points Bulletin for veterans of Worldcons past (and Worldcons to come!).

Have YOU played before?  
 Still want to play?  
 Got some experience or expertise to share?  
 Want to play abroad?  
 Great - you can be on our team!

We're looking for enthusiastic team players, who'll enjoy helping us to create the kind of programme that produces an empty hall at the gripe session. That's our goal. Are you in for it?

We've already had several offers of advice and assistance from attendees of New Orleans' Nolacon. We've heard from veterans such as Ed Rish from Cupertino, California, and from first-timer Arjan

Plug from Noordwijk, Holland, and many, many more.

We have room for veterans and rookies alike. All you need is enthusiasm, reliability, commitment - and to be in Holland in 1990!

To answer this All Points Bulletin just write to Post Office Box 95370 - 2509 CJ The Hague, Holland.

## ConFiction wants YOU

(and the world....). The fans of Austria, Australia, Belgium, Canada, Czechoslovakia, Denmark, East-Germany, Finland, France, Great Britain, Holland, Hungary, Ireland, Israel, Italy, Japan, Lichtenstein, Monaco, Norway, Poland, Portugal, Spain, Sweden, USA, USSR, West-Germany, Yugoslavia and any other country I've forgotten...

We're planning programmes about the national science fiction scene in various countries. If you have ideas or items to contribute, please write us about them: ConFiction, P.O. Box 95370, 2509 CJ The Hague.

Fill out the form below and send it to our address

NAME \_\_\_\_\_

ADDRESS \_\_\_\_\_

CITY \_\_\_\_\_

STATE \_\_\_\_\_ ZIP \_\_\_\_\_

*I would like more information on:*

Advertising       Dealers Room  
 Art Show           Masquerade

*I would like to volunteer my help with:*

Programming       Operations  
 Art Show           Gopher  
 Other: \_\_\_\_\_

## **nederlands contactcentrum voor science fiction**

# **NCSF**

The oldest science fiction fan-club in Holland  
(nearly a quarter of a century)  
welcomes ConFiction, the 48th World con,  
in 1990 in The Hague, Holland.

We'll hope that many fans from all over the world will  
attend the second Worldcon to be held on the continent  
of Europe.

But you don't need to wait for 1990 to join the NCSF!  
As a member you receive our bi-monthly clubzine  
Holland SF, and you're entitled to buy very cheaply  
from our Book Club. Just drop us a note!

Rob Houwerzijl  
Secretary NCSF  
Gibraltarstraat 67 III  
1055 NK Amsterdam

*oprichtingsjaar 1965, doopnaam verenigingsregister v 477205, giro 737451 t.n.v. penningmeester.*

## **INFORMATION ON CONDIEGO/1990 N.A.S.F.I.C.**

The 1990 North American Science Fiction Convention will be in  
San Diego at the Marriott hotel, August 30-September 3, 1990.  
Professional guest of honor is **Samuel Delany**.

Fan guest of honor is **Ben Yalow**.

### **Membership Rates:**

May 1988 to Jan. 1st. 1989: \$45.00  
Jan. 2nd. 1989 to Jul. 1st. 1989: \$55.00  
Jul. 2nd. 1989 to Jan. 1st. 1990: \$65.00  
Jan. 2nd. 1990 to Jul. 1st. 1990: \$75.00  
No mail-in Membership after July 1st. 1990.  
At the door : \$85.00  
Children under 10 years of age free with paid adult.  
Supporting Membership : \$25.00

**Make checks payable to:**

**ConDiego/1990 NASFIC  
P.O. Box 15771  
San Diego, CA. 92115**



# CHICON V

The 49th World Science Fiction Convention

# CHICON V

August 29 - September 2, 1991  
The Hyatt Regency Chicago

---

## GUESTS OF HONOR

---

**AUTHOR: Hal Clement**

**ARTIST: Richard Powers**

**EDITOR: Martin Harry Greenberg**

**FAN: Jon and Joni Stopa**

---

## Marta Randall, Toastmaster

---

For Information: P.O. Box A3120, Chicago, Illinois 60690  
Registration: P.O. Box 218121, Upper Arlington, Ohio 43221

---

### MEMBERSHIP INFORMATION

There are two classes of Worldcon membership, attending and supporting. Supporting members get copies of the major publications, the right to nominate and vote for the 1991 Hugo Awards, and, with payment of a fee, the right to vote in the 1994 Site Selection balloting. Attending members get the rights of the supporting members, and can also attend Chicon V.

Owing to promises made during our bid, the pricing structure for Chicon V is complex. Use the following to figure your cost of membership. If you:

**PRESUPPORTED AT \$20 and voted, you are**

an attending member, and will receive a \$5 rebate.

**PRESUPPORTED AT \$20 but didn't vote, you are not a member, but an attending membership will only cost you \$30.**

**DIDNT PRESUPPORT but voted, you are a supporting member. Your conversion to attending membership will cost \$20.**

**DIDNT PRESUPPORT and didn't vote, either, you ain't a member. A situation easily remedied. Attending membership is \$50 thru 31 December 1988, and \$75 for all of calendar '89.**

**SUPPORTING MEMBERSHIPS are available for \$20 until 12/31, but will be higher later.**

*This is a non-political proclamation of the Party Animal Party*

# Agent's Corner

## Australia

Justin Ackroyd  
GPO Box 2708 X  
Melbourne 3001

## Belgium

Ronald Grossey  
Bouwhandelstraat 37  
2200 Borgerhout

## Canada

Yvonne & Lloyd Penney  
P.O. Box 186,  
Station 'M' Toronto  
Ontario M6S 4T3

## Finland

Toni Jerrman  
Viljelijantie 4-6 D-103  
00410 Helsinki

## France

Jean-Pierre Moumon &  
Martine Blond  
Villa Magali Chemin  
Calabro  
83160 La Valette-du-Var

## Italy

Patrizia Thiella  
Via Novara 3  
20089 Rozzano (MI)

## Japan

Masamichi & Michiko  
Osako  
523, 1-5-11, Inaba,  
Higashiosaka  
Higashiosaka 578

## New Zealand

Victoria Craig  
30 Norway Street Kelburn  
Wellington 5

## Norway

Johannes Berg  
Tuenger Alle 10  
0374 Oslo 3

## Poland

Wiktor Bukato  
P.O. Box 983  
00-950 Warszawa

## Sweden

Andreas Björklind  
Erikshällsgatan 16A  
S-151 46 Södertälje

## Carina Skytt

Lundbygatan 36  
S-151 46 Södertälje

## United Kingdom

Colin Fine  
28 Abbey Road  
Cambridge, CB5 8HQ

## United States

Marc S. Glasser  
P.O. Box 1252  
Bowling Green Station  
New York, NY 10274

David Schlosser  
6620 Hazeltine Ave.  
Apartment # 9  
Van Nuys, CA 91405

## West-Germany

Peter Herber  
Hofrichterstraße 13  
5000 Köln 80

## Yugoslavia

Damir Coklin  
Pregradska 4  
41000 Zagreb

ConFiction  
T-shirt Department  
P.O. Box 95370  
2509 CJ The Hague  
Holland

# Mouse For Sale!

No, *not* the Mouse itself. Not Isaac Asimouse!  
But you can have its portrait in three colours on  
the front of our new T-shirts. They have proven  
to be very popular, hence the new 'edition' in  
five sizes:

Small Medium Large Extra Large  
and  
Extra Extra Large!

And in just *one* price: US\$13 or UK£8 or  
DM25 or DFL 25.

Come and see us at a convention between now  
and 1990 and buy yourself an original T-shirt.  
It also makes you an honorary crew member of  
the Mouse That Roared, our sailing ship en  
voyage to ConFiction.

You can also order your T-shirt by mail. Add  
US\$2, UK£1, DM2 or DFL3 per T-shirt for  
delivery. Fill in this form (or a photocopy if  
you don't want to spoil your Progress Report)  
and send it



Yes, I like to order an original  
ConFiction T-shirt. Send me:

small  medium  large  
 extra large  extra extra large

Name \_\_\_\_\_  
Address \_\_\_\_\_  
City \_\_\_\_\_  
State \_\_\_\_\_ Zip \_\_\_\_\_

I enclose cash (by registered mail only!)  
 I enclose a cheque or International Money  
Order

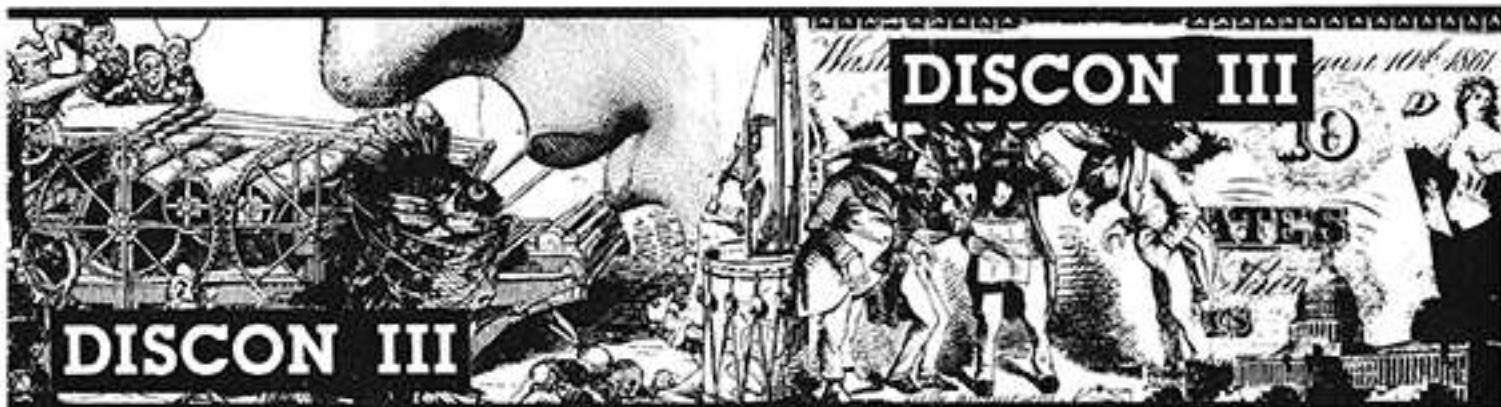
## DC in '92—it's a monumental idea!

Washington, DC, invites your support for our bid to host the 50th World Science Fiction Convention. We have the experienced leadership, location, and facilities to bring you the best Worldcon ever—DISCON III.

### Why Washington?

Our facilities are top-notch. The Sheraton Washinton, Omni Shoreham, and Washington Hilton have made preliminary agreements with us to provide 3,000 sleeping rooms, 370 suites, over 100 meeting rooms, 95,000 square feet of exhibition space, and an enormous ballroom where 4,200 people can have an unobstructed view of the stage. The hotel consortium will provide a free shuttle bus service among the hotels. DISCON III offers you spacious convention facilities just the right size for a Worldcon, without the possibility of other groups sharing the space.

DISCON III's committee is a large, stable, well-organized group of local fans and pros with decades of convention leadership experience. We hosted the 1963 and 1974 Worldcons and have run Disclaves for over 35 years. Our committee members have organized and worked on local, regional, and world science fiction conventions in all departments and on all levels of responsibility. From gopher to Worldcon chair we've done it all and we want to apply this expertise to the 50th Worldcon.



Washington is easily accessible. Three large airports, served by all major and many regional airlines, offer 15,000 incoming flights each week from more than 500 cities around the world. Dulles International and Baltimore-Washington International airports have bus services to take you to your hotel.

Washington National Airport has a subway (Metro) stop to take you to within half a block of your hotel. Amtrak's Union Station includes a Metro stop, which also serves the Greyhound bus terminal three blocks away. In fact, the barrier-free Metrorail system connects you to all of Washington and its suburbs. It's clean, fast, and reliable and connects to an extensive bus system; together they can take you anywhere in the area. If you're driving, you can reach the Capital Beltway via many interstate highways; the Connecticut Avenue exit will take you directly to Worldcon.

### Once you're there . . .

Our city has something for everyone. There are museums of every description, from the Smithsonians with their large and varied collections (Air and Space, Natural History, National Gallery of Art, etc.) to specialized museums such as the Textile Museum and the Armed Forces Medical Museum, to name two of dozens. Just a few blocks from DISCON III is the world-class National Zoo, home of gibbons, bats, meerkats, and the famous giant pandas. A ten-minute subway ride takes you to the Mall, where you can see the Jefferson Memorial, U.S. Capitol, Washington Monument, Lincoln Memorial, White House, and most of the major museums. Nearby are the National Archives, Supreme Court, FBI building, National Aquarium, and countless other sights.



## DC in '92—it's a monumental idea!

Within a few blocks of the Mall is Washington's revitalized downtown shopping area, with three major department stores and countless specialty shops. Nearby Georgetown has hundreds of stores, tree-lined Colonial streets and historic sights. The Metro can take you to several large shopping malls and many interesting neighborhoods such as our own Chinatown and Arlington's Little Saigon. And of course, we have any number of fine bookstores.

Where else but Washington can you eat Afghan, French, Thai, Nepalese, Italian, Eritrean, Chinese, Tex-Mex, and Indian—or American or Fast—without walking more than two blocks from your hotel? There are 22 restaurants that close to our hotels. Take a short walk or a one-stop Metro ride and there are easily 100 more places to choose from. Whether your tastes run to sandwiches or haute cuisine, you'll find something nearby and within your budget. Or, you could stop in at a nearby convenience, grocery, or liquor store and stock up

Washington has a booming night life. Clubs with live entertainment of all sorts abound, some right on DISCON's block. You can hear folk, jazz, rock, or country music, visit a comedy club, see a play or dance recital, or go to a concert. There is a thriving local arts community, and DC is always a stop on national tours.



If you prefer your entertainment outside the city, the countryside of Virginia is only a few miles away, with its Civil War battlefields and historic towns. Take a boat ride down the Potomac to Mount Vernon, George Washington's home. Go upriver to Great Falls Park and the C&O Canal National Historical Park, where you can rent a canoe or bike to traverse the canal, or picnic on massive rock outcroppings along the river. Nearby in Maryland are the U.S. Naval Academy and Wild World, a large new amusement park featuring a giant wave pool and the largest all-wood roller coaster on the East Coast.

### Keep us in mind!

By now you've seen our T-shirt and buttons; they're available at our bid parties. We've also published a 16-month fannish calendar/art portfolio with work by a number of award-winning artists. The calendar is available at conventions for \$5, or by mail order for \$5 plus \$3 postage per package (limit 6 per package).

Pre-supporting memberships in DISCON III are only \$5. Or, you can buy a pre-opposing membership for \$19.92. Political favors are a mere \$10.

We know you'll agree that Washington has the best location, the best facilities, and the best leadership for a fantastic 50th Worldcon. For more information, talk to us at our bid parties; we'll be happy to answer your questions. Or, you can write to us at: DISCON III, P.O. Box 2745, College Park, Maryland 20740-2745. Thank you for your support!

## MAD BIDDERS NEVER DESIST

MAD BIDDERS who never desist DESERVE WINNING A WORLDCON  
and all the consequences thereof  
because of --

- our unrelenting perseverance,
- the fact that we bid for an area that was deprived of a chance to have a Worldcon in all the 50-year long history of Worldcons,
- the fact that we bid for a city in a country that is probably the most visitable one in the world today,
- and the fact that we're ghreat ghays and ghals who love y'all. (We also love phannish phun, bheet, bhack rubbing, and Bilbo Baggins.)

... ALL HAVE A BALL at

# WORLDCON IN ZAGREB



Zagreb is in old Europe, and we're clever folks, so we know we CANNOT aim at having the biggest Worldcon ever. We WOULDN'T do that even, considering the recent sentiment against "overswollen", expensive Worldcons congested with "un-fans".

But we CAN and DO promise you fannish fun like never before. We know experienced congoers who'll vouch for that, too. We also have a site for it out of your nice dreams.

So please write for details to:

## ZAGREB IN 1993

WORLDCON IN ZAGREB, c/o SFera, IVANIĆGRADSKA 41 A, 41000 ZAGREB, YUGOSLAVIA

To Support our Bid please contribute 5 Dollars.

If you wish to Oppose, prove it with 10 Dollars.

If you wish to be a Friend, show us the sentiment by paying 20 Dollars and this will be your full Attending membership is you vote for us when the time comes.

# NEMA PROBLEMA!



KOMPAS  
JUGOSLAVIJA

## The Netherlands Congress Centre

Everything is possible in the Netherlands Congress Centre, the home of ConFiction in August 1990. At the time of writing, the Centre has just finished an extensive renovation and extension programme, resulting in the addition of new halls and equipment, all of them available to ConFiction.

More than 30 halls now offer accommodation for meetings of 20 persons up to large events and conferences of over 10,000 participants. All halls are or can be equipped with the latest audio-visual facilities, closed circuit TV, infra-red translation installations, etc.

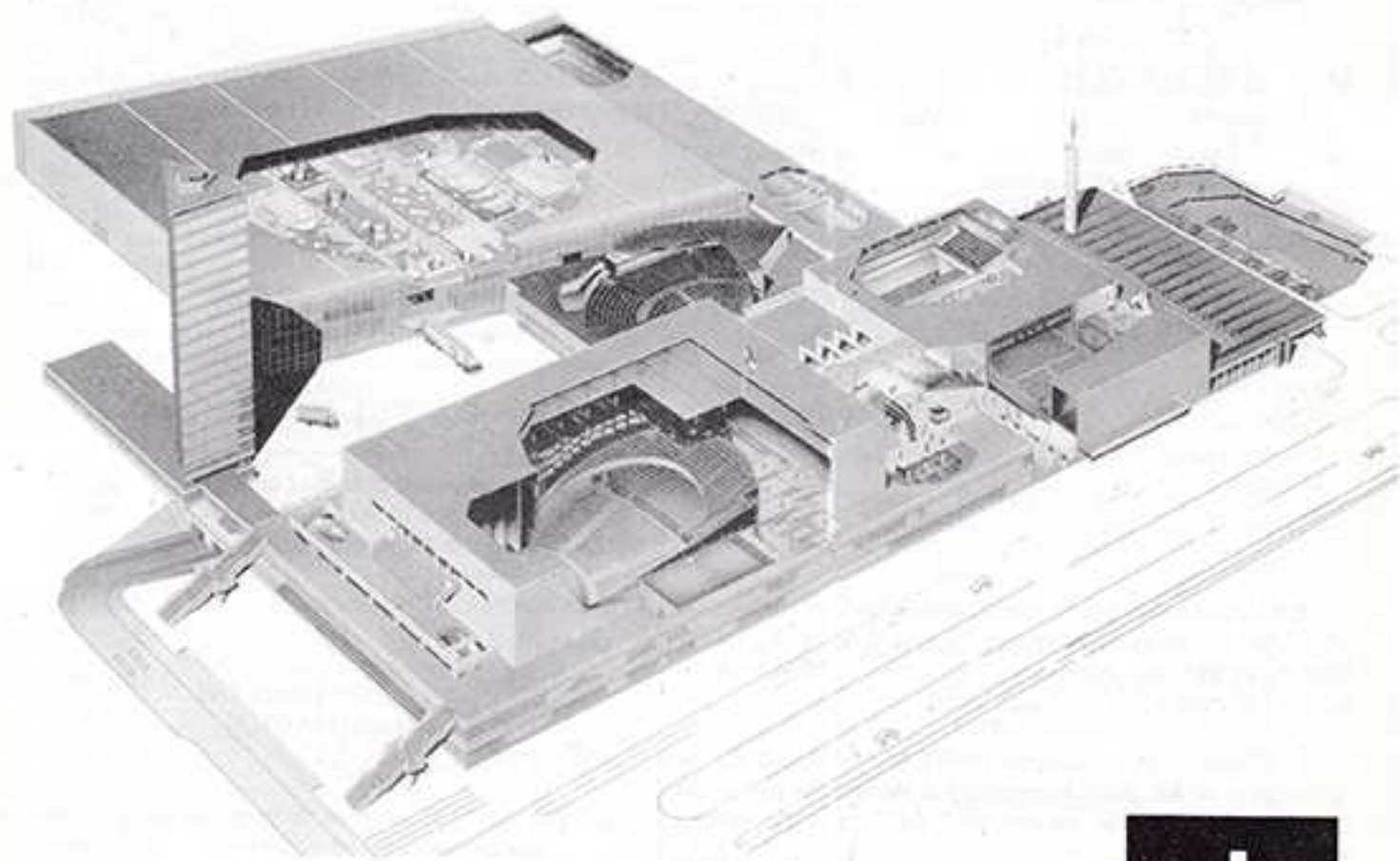
The new Van Gogh Hall is the first hall in the Netherlands permanently equipped with a 16-monitor Vidiwall and associated equipment (video/ audio routing system, video recorders, optical disk players, cameras, etc.). A 5x5 meter electrically controlled projection screen is also available. The hall has a capacity of 800 seats and includes 24 fixed microphone connections, so that cables in the aisles have become a thing of the past. All seats

have writing tablets in the arm rests.

The main hall - the Prince Willem-Alexander Hall - has been renovated. The enormous stage with seven adjustable sections, can facilitate the most complicated and imaginative productions - like a Masquerade. For this reason broadcasting corporations frequently use this hall for recording TV shows.

Furthermore, both the Prince Willem-Alexander Hall and the Mondriaan Hall are equipped with the most advanced computer-controlled lighting control panels in Europe.

As stated earlier ConFiction will take over the complete Centre, with the exception of the Staten Hall, an exhibition hall, which will be completely sealed off during ConFiction. As you can see in the floor plans, all halls have been renamed in honour of world-famous Dutch painters, from Rembrandt to Van Gogh. Again, those plans show how ingeniously the Centre is built around the central foyer, while most of the larger halls also have their own foyer - excellent meeting areas..



# Noreascon Three

PROFESSIONAL GUESTS OF HONOR

**Andre Norton**

**Ian and Betty Ballantine**

FAN GUESTS OF HONOR

**The Stranger Club**

Boston's first Science Fiction club

August 31 - September 4, 1989

The 47th World Science Fiction Convention  
Sheraton-Boston Hotel/Hynes Convention Center  
Boston, Massachusetts USA



## MEMBERSHIP RATES

All of our rates are in U.S. dollars. You can send U.S. or the equivalent Canadian funds to us, or the equivalent in their local currency to our agents. (Canadians may send us a check in Canadian dollars; we have a Canadian bank account.) We also accept MasterCard or Visa. Until the pre-registration cutoff our rates are:

	(to 9/15/88)	(9/16/88 - 3/15/89)	(3/16 - 7/15/89)
Attending	\$60	\$70	\$80
Supporting	\$20	\$20	\$20
Memberships			
Conversion from Supporting to Attending	\$40	\$50	\$50
Children's Admission	\$40	\$45	\$50

Children's Admissions may only be purchased in conjunction with a full Attending Membership. No voting rights or publications come with this Admission. To qualify, children must be under 12 years of age at Noreascon Three.

A Supporting Membership or a Children's Admission may be converted to an Attending Membership at any time by paying the difference between the amount paid for it and the current Attending rate.

## FOREIGN AGENTS

AUSTRALIA	Carey Handfield; Box 1091 Carlton, Victoria 3053
UK	Colin Fine; 28 Abbey Road Cambridge CB5 8HQ
EUROPE	Kees Van Toorn PO Box 3411 3003 AK Rotterdam Netherlands

## VOLUNTEERS

If you are interested in helping on the con, please write to us. Let us know what you're interested in working on and your letter will be forwarded to the proper area.

## FOR INFORMATION write to:

Noreascon Three  
Box 46, MIT Branch Post Office  
Cambridge, MA 02139  
USA

If you move, please send us your change of address. The convention is approaching and we do not wish to lose you.

*The Fiftieth Anniversary Worldcon*

# Membership List

## New Memberships

New members who joined between November 15th, 1987 and October 15th, 1988 are listed below. Please check the list and should you find any errors or misspellings, please don't hesitate to write to us and we'll correct them.

1368 AT Abelkis, Paul K	2513 AT Bishop, Matt	1486 AT Campbell, Ramsey	0413 AT Donath, Oktavius
0013 AT Abramowitz, Alyson L	2434 SU Bjorklind, Andreas	2382 AC Campbell, Tasmin	2330 AT Dorland, H.M.
2372 AT Adams, Gail	2550 AT Blain, Dot	1473 AT Cannoy, Tamzen	2363 SU Doroschenko, Leo
2380 AT Ainsworth, Helen	2548 AT Blain, Jim	2572 SU Caplan, Jack	1515 AT Douglas, John R
1377 AT Albasi, Gloria L	2551 AC Blain, Mandy	2441 AT Cardinali, Mario	2487 SU Drayton, Michelle
2575 AT Alderson, Julia	2387 AT Blanckaert, Jan Jozef	1472 AT Carleton-Chapek, Lori	2521 AT Duff, John
2205 AT Aldiss, Brian Wilson	1432 AT Blom, Sue A	1479 AT Carleton, Gordon	2525 AT Duff, Lynn Ellen
2177 AT Aldiss, Margaret	2302 AT Blond, Martine	1004 AT Carmichael, John	1057 SU Dulberg, Joan
1293 AT Alivojvodic, Robert	0540 AT Blonk, Erwin	2564 AT Carroll, Cathy	2527 AT Dunlop, Kathryn
1109 AT Allan, Kay	0487 AT Bobnar, Beti	2598 AT Carson, Susan	0682 AT Edgeworth-Biemesser, Dorothea A
0532 AT Alcock, Philip	2410 AT Boeckstein, J.L.	2368 SU Caughey, Carolyn	0381 AT Edwards, Barbara
0693 AT Alschuler, Matthew B	2475 AT Boom, J.H.E.	2470 SU Chandler, H.A.	0758 AT Edwards, Chris Logan
0015 AT Altana, Roger	1391 AT Boster, Alex	0367 AT Cheater, Mike	1061 AT Eisen, Janice M
2480 AT Anderson, Karen	0020 AT Boucher, Stephen	0123 AT Christie, Mike	2500 AT Elder, Marie C.
2479 AT Anderson, Poul	2396 AT Bowland, Linda	1489 AT Chu, Alina	2553 AT Elendt, Mark
2291 AT Andrew, Stefan	2509 AT Boyle, Bill	2503 AT Clark, Fiona	1555 AT Eliasson, Holger
1128 AT Andrews, Stuart	2445 AT Braithwaite, Michael	0745 SU Clark, Ivan O	0211 AT Eilers, Marjii
0569 AT Aramian, Tammy	2605 AT Brammer, Cecilia	0746 SU Clark, Susan Mp	1558 AT Ellersteck, Frank H
0432 AT Arweiler, Walter	2604 AT Brammer, Fred	1484 AT Clarke, Paul	2342 AT England, A.G.
2581 SU Atwood, Ted	0108 AT Breidbart, Seth	1494 AT Claypool, Gavin	2508 AT English, John
1937 AT Bachellier, J.P.	2367 AT Brialley, Claire	0405 AT Cleaver, Fred	1003 AT Enzmarn, Heidi
2546 SU Bangs, Mari	2501 AT Britten, Lois	0919 AT Collyer, Noel	2476 SU Evenblij, P.J.
2400 AT Barceolo, Miquel	1401 AT Broomhead, Ann A	1225 AT Conner, Debra L	1601 AT Farinelli, Cindy
1229 AT Barker, Trevor	2436 AT Brown, Barry	2462 SU Cook, Norman L.	1600 AT Farinelli, Mike
0622 AT Barnard, Jean Lynn	2437 AT Brown, Jayne	0464 AT Cool, Thomas	0976 AT Farmer, Andrew D
0156 AT Barnes, Rob	2438 AT Brown, Mariana	2459 AT Cooling, Brigid	1603 AT Farmer, Nancy R
0914 AT Belpoeme, Wally	0237 AT Brus, Erik	1468 AT Cordsmeyer, Paul	1594 AT Ferguson, Bryan
2520 AT Belton, Joanae	2404 AT Bryant, G.A.	2369 AT Cornell, Marion Nomi	1597 AT Ferree, Richard N
2419 AT Benford, Myson	0357 AT Buckley, Ed	2481 AT Courtney, Gail	2597 AT Filmore, Thomas
2416 AT Benford, Gregory	1418 AT Burdick, Bruce S	2514 AT Cox, Adrian	2457 SU Fitz-Patrick, Johanna
2417 AT Benford, Joan	1394 AT Burns, Bill	2534 AT Cramer, Kathryn	0730 AT Fitzsimmons, Catherine
2418 AT Benford, Mark	1395 AT Burns, Mary J	2515 AT Cramp, Nicolas	2497 AT Fluegge, Frank
1155 AT Benjamin, S	0023 AT Burns, Peter	2543 AT Cruickshank, Janet R.	2353 AT Foster, Syd
2346 AT Berg, J.G.M. op ten	2340 SU Burrows, Allan	0604 AT Cruz, Dawne J Dela	0665 AT Franklin, Ellen F
2586 AT Berry, David W.	2381 AT Campbell, Jenny	0849 AT Dagsson, Higi Toldif	1574 AT Freeman, Barry C
2414 AT Biancamano, Nancy J	2383 AC Campbell, Matty	2386 AT Daly, Frances	2492 AT Freunek, Gunther
		2385 AT Daly, Julia	1570 AT Friauf, Douglas
		2552 AT Daniel, Diane	2522 AT Friedman, Deborah A.
		1037 SU Day, David	1568 AT Fulkerson, James E
		2530 AT De Longpre, John	0619 AT Fusek, John S
		2498 SU Delaurentis, Linda	2388 AT Galloway, Thomas
		1122 AT Deterding, Zoe	0552 AT Gelfand, Larry
		2560 SU Dezurik, Tony	2532 AT Gentili, Karl S.
		2559 AT DiModica, Genevieve	0125 AT Gerbish, Ye
		2389 AT Diggs, Marsha	2347 AT Gerritsen, J.
		1520 AT Diggs, Mike	2399 AT Giese, Tom
		2579 SU Dimaggio, Joe	2349 AT Gilham, Karen
		0940 AT Dobson, Dermot	2350 AT Gilham, Steve
		2596 AT Dobson, Perdy	

## Geographical Breakdown per country as of October 15, 1988

Australia	53	Ireland	2	Norway	34
Bahamas	1	Israel	3	Poland	1
Belgium	15	Italy	8	Spain	2
Brazil	1	Japan	7	Sweden	25
Canada	60	Malaysia	1	Switzerland	2
Denmark	12	Mexico	1	United Kingdom	474
Finland	16	Netherlands	147	United States	1,134
France	12	New Zealand	4	West-Germany	78
				Yugoslavia	7

Total membership 2101

This does not include the registered pre-supporters of the bid campaign who were included in the first list in Progress Report One; all members in this list are either new members or their membership status has changed since November 22nd, 1987.

# Membership List

0786 SU Gillen, Bill  
 1628 AT Gish, Ray  
 1627 AT Gish, Terry  
 0605 AT Glicksohn, Mike  
 1150 AT Gravelle, Lisa  
 2538 AT Greenbaum, Gary  
 1133 AT Grehan, Peter  
 0393 AT Grijin, Martin v.d.  
 0562 AT Grosko Jr, Stephen J  
 2391 AT Grothausen, Harry  
 1055 AT Grubbs, David  
 0561 AT Gruen, Richard Rev  
 1604 AT Gunn, Eileen  
 2439 AT Guthrie, Jonathan  
 2507 AT Hagbard, James  
 2599 SU Hager, Dana  
 2482 SU Hahn, D. Auriette  
 1699 AT Hahn, Robert R  
 2574 AT Haldeman, Cynthia  
 0430 AT Haller, Ralf  
 2567 AT Hansen, Mark  
 0556 AT Harris, George E  
 0659 AT Harris, Jonathan  
 1698 AT Hartman, Eryan  
 1697 AT Hartman, Stephen G  
 2533 AT Hartwell, David G.  
 2485 AB Hasselberg, Disa  
 2531 AT Hastic, David  
 1690 AT Hawkins, Jackie  
 0866 AT Hazu, Hiroaki  
 2523 AT Heaton, Caroline  
 2425 SU Heck, Frank van  
 1226 AT Heiskanen, Jussi-Ville  
 2390 AT Heitlager, Michiel  
 2566 SU Hepperle, Robert  
 2355 SU Herkart, Janet P.  
 2356 SU Herkart, Paul G.  
 2376 AT Hettinga, W.R.  
 2397 SU Hinz, Colin  
 0506 AT Hochreuther, Alexander  
 2490 AT Hoff, Gary  
 2464 AT Hofmann, Armin  
 2463 AT Hofmann, Matthias  
 1645 AT Hoka, Sherlock  
 1130 AT Holroyd, Marina Ja  
 0294 AT Hoodon, David D  
 1267 AT Hudes, Dana  
 1639 AT Hudson, Jim  
 2478 AT Hull, Elizabeth Anne  
 2510 SU Hunt, Paul  
 0648 AT Hurst, David A

2582 AT Iornetti, Nico  
 2402 AT Jackson, Catherine  
 1733 AT Jackson, Kathryn F  
 2423 SU Jambriak, Tanja  
 1176 AT James, Wilf  
 0749 AT Jamison, Paul E  
 2326 AT Janssen, Henk  
 2327 AT Janssen, Jennifer  
 2576 AT Jensen, William  
 0954 AT Jerrman, Toni  
 0113 AT Johnson, Carol  
 0635 AT Johnson, Phyllis Evelyn  
 1723 AT Jones, Ruby L.  
 2395 AT Jordan, Alex  
 2365 AT Jordan, Jean  
 2366 AT Jordan, Kenneth  
 2460 SU Jossierand, Earl  
 2491 AT Jost, Moonika  
 0133 AT Jost, Walter  
 0685 AT Jozwiak, Kenneth  
 2590 AT Kagan, Eric  
 2591 AT Kagan, Janet  
 2432 AT Katzoff, Mark  
 2348 AT Kennaway, Richard  
 2556 AT Kernes, Mark  
 2573 SU Kimbriel, Katharine  
 2411 AT Klaasen Bos, Eline  
 2554 AT Kleba, Louise  
 2341 AT Klein-Lebbink, E.  
 2592 SU Kliman, Lincoln W.  
 0214 AT Klop, R.  
 1743 AT Kobe, Elizabeth E  
 0207 AT Konkin III, Samuel E.  
 1746 AT Konkol, Kenneth R  
 2517 AT Kotkiewicz, Ronald  
 2529 AT Krentz, Laura  
 2496 SU Kubler, Bernhard  
 2352 SU Kucera, Tommy  
 0239 AT Laansma, C  
 2461 AT Lally, David J.  
 1067 AT Larsen, Lance F  
 0702 AT Larue, Candace  
 1797 AT Larue, Stephen M  
 2524 AT Lasne, Francois  
 Xavier Michel  
 2449 AT Last, Adrian  
 0710 AT Lawrence, Ann L  
 0055 AT Lawrence, Anne  
 2453 SU Lawson, Steven  
 0400 AT Layton, Alexis  
 2428 AT Lazzaro, Joseph

0360 AT Lee, Karen  
 2393 AT Leur, Ruud de  
 0309 AT Lidral, Bob  
 0280 AT Lieberman, Paula  
 0647 AT Lies, Val  
 2454 AC Lightsey, Ramal Malik  
 1366 AT Lightsey, Sheila  
 210 AT Lindgren, Rolf  
 2505 AT Looken, Judith  
 2469 AT Lozinsky, Zygmunt A.  
 2563 SU Lucyshyn, Alex  
 2562 SU Lucyshyn, Teri  
 0990 AT Lundgren, Carl  
 0989 AT Lundgren, Michele  
 1774 AT Lundwall, Sam J  
 2403 AT Lunney, Frank  
 0879 AT Lusker, Uwe  
 0743 AT Lyau, Brad  
 0407 AT Lyn-Waitsman, Barry  
 0408 AT Lyn-Waitsman, Mandle  
 0643 AT Lynch, Dick  
 0644 AT Lynch, Nicki  
 0353 AT Macaran, Melora  
 2398 AT MacLaney, Thomas  
 2442 AT Mallett, Carole-Anne  
 0769 AT Mangan, Lois H  
 2351 AT Marshall-Potter, Jon  
 1252 AT Martin, Diane  
 2502 AT Martin, Keith  
 0684 AT Mason, Linda  
 1171 AT Mastrigt, R van  
 1857 AT Matheny, Charles  
 0511 AT Mathioscheck, Christian  
 2450 SU McCallum, Douglas  
 1845 AT McConnell, Deborah  
 2565 SU McCoy, Sean  
 2408 AT McCutcheon, Kay  
 2406 AT McDonald, Wendy  
 0961 AT McFadden, Malinda  
 2488 AT McGee, Brian Hugh  
 1837 AT McGeehan, Bernie  
 1838 AT McKenzie, Margaret  
 1839 AT McKenzie, Michael  
 1266 AT McMurrian, Althea  
 0777 AT Meier, Wes  
 0778 AT Meier, Wilma  
 1062 AT Meltner, Ken  
 2431 AT Meskys, Edmund R.  
 2528 AT Meyer, Kathleen  
 1832 SU Miller, Alan F  
 1833 AT Miller, Ben W  
 2544 AT Miller, Glenda  
 1831 AT Miller, Sasha  
 2603 AT Minnis, Roger A.  
 0456 AT Morgan, Chris  
 2539 AC Morgan, Jason  
 2540 AT Morgan, Karen  
 0457 AT Morgan, Pauline  
 1819 AT Morris, Roger  
 2504 AT Morris, Simon  
 2375 AT Mortimer, Stephen  
 2422 SU Mrkoci, Igor  
 2354 AT Mulligan, Stephen B.  
 1094 AT Mullin, Den  
 0307 AT Nathanson, Phillip M  
 2456 AT Naylor, Karen  
 1020 AT Nelson, Michael R  
 2377 AT Nickols, Kristine  
 0235 AT Nolte, H.T.F.  
 2337 AT Noteboom, R.F.  
 1873 AT Novak, John J  
 1112 AT O'Donnell, Andrew  
 2424 AT O'Neil, Patricia Mary  
 2471 AT Olander, Tom  
 0654 AT Olanich, Catherine C  
 2290 AT Olie, Keen  
 2589 AT Oljnyk, Martha  
 2331 AT Onderwater, R  
 1095 AT Osborne, Elizabeth Ann  
 2392 AT Ottema, Henk  
 1927 AT Pappas, James J  
 0599 AT Parente, Lois E  
 1276 AT Parker, Margaret  
 1928 AT Parsons, Nigel Gunther  
 1923 AT Partridge, Mark E  
 2384 AT Pavlat, Eric  
 2421 AT Payne, Alan

2405 AT Peasley, Jeff  
 2568 SU Perkins, Philip  
 2483 SU Phillips, Carl Maxey  
 2344 AC Pickering, Annabel  
 0337 AT Pickering, John  
 0336 AT Pickering, Frances  
 2557 SU Pilvinis, James  
 0878 AT Pinney, Spencer  
 1236 AT Pirinen, Anetta  
 1237 AT Pirinen, Pekka  
 1908 AT Plumlee, Gary L  
 0636 SU Poe, Stephen D  
 2477 AT Pohl, Frederik  
 2364 AT Ponsen, J.L.  
 2447 SU Porter, Carol  
 2430 AT Pott, Katherine  
 2580 AT Powell, James  
 2595 AC Price-Whelan, Alexa  
 2594 AT Price, Audrey  
 0782 SU Prince, Sarah S  
 2370 AT Pritchard, Lorraine  
 2371 AT Pritchard, Steve  
 0078 SU Proctor, Charlotte  
 1365 AT Prosterman, Steven M.  
 0606 AT Pruitt, Timothy A  
 0882 AT Pukallus, Horst  
 1234 AT Purslow, Allan  
 2545 AT Pye, Nancy  
 1363 AT Randall, David  
 2588 AT Rasmussen, Geraldine  
 0513 AT Rauscher, Reinhard  
 2415 AT Redding, Marjorie  
 2489 AT Reid, Alastair  
 1962 AT Resnick, Carol  
 1961 AT Resnick, Mike  
 0841 AT Ribbens, C  
 0833 AT Richards, Mark  
 2407 AT Richardson, Mike  
 2601 AT Rosch, Kharis  
 2600 AT Roach, Russell  
 2458 SU Robertson, Andy  
 2468 SU Robinett, Linda Louise  
 0729 AT Robison, Mary  
 1091 AT Rogers, Justin  
 0980 AT Rogge, Rebekah L.  
 2472 AT Roimola, Ben  
 2329 SU Rooy, T Van  
 2516 SU Rosenberg, Robert  
 2535 SU Rosenthal, Andrew  
 2537 AT Roth, Jeannette  
 2536 AT Roth, Leslie  
 2512 AT Row, David  
 0892 AT Ruh, Lawrence A  
 0283 AT Sachter, L. Ruth  
 2542 AT Saddler, Linda  
 2541 AT Saddler, William  
 2052 AT Sands, Kevin  
 2361 AT Sands, Lindsay  
 2420 AT Saxby, Andrew  
 2373 AT Saxton, Angie  
 0178 AT Schaap, Peter  
 2493 AT Schindler Jr, Ludwig  
 0147 AT Schlosser, David  
 2495 AT Schmidt, Jurgen  
 2362 AT Schouten, Herman  
 0119 AT Schroeder, Larry  
 2549 AT Score, David  
 2038 AT Selinger, Gail  
 1063 AT Semken, Steven C  
 0807 AT Shane, Randall H.  
 2030 SU Shattan, Ariel  
 2455 SU Shearman, Moira  
 2412 AT Sheller, Otto  
 2413 AT Sheller, Ruth  
 2526 AT Shipman, Linda  
 2506 AT Sinha, Ivan  
 2022 AT Sinisalo, Johanna  
 2435 SU Skytt, Carina  
 1309 AT Slater, Joyce  
 0179 AT Slater, Ken  
 pi AT Smit, John Paul  
 2374 AT Smith, Alison  
 2012 AT Smith, Frank R  
 2585 SU Smith, Randal  
 1162 AT Sneddon, Robert  
 2570 AT Soediono, Herman  
 2569 AT Soediono, Prajitno



1016 AT Somer, Tom  
 2002 AT Spanoudis, Maki  
 2001 AT Spelman, Richard C  
 0818 AT Spence, Marty  
 0301 AT Spence, Rob  
 2465 AT Spix, Claudia  
 2466 AT Stock, Nicole  
 0771 AT Stein, Michael  
 2587 SU Stern, Tom  
 2448 AT Stewart, John  
 2444 AT Stiemer, C.F.  
 0832 AT Stone, Geoffrey  
 0621 AT Stuck, Duane  
 0868 AT Sumiraschi, Mario  
 1246 AT Supinen, Pekka  
 2409 AT Swieten, Frans van  
 2394 AT Swieten, Peter van  
 1974 AT Szczesuil, Timothy P.  
 2519 AT Takeuchi, Shin Suke  
 2494 AT Tappe, Andreas  
 2511 AT Taylor, Graham  
 2359 AT Taylor, Ian M.  
 2360 AT Taylor, Kathy  
 2473 AT Tenhunen, Eeva-Liisa  
 0896 AT Terry, Terelle S.  
 2467 AT Thayer, David  
 0816 AT Thompson-Kaufman,  
 Kathleen  
 2083 AT Thompson, CarolynH  
 2433 AT Thompson, Don C.  
 0701 AT Thompson, Kirk D.  
 698 SU Thomson, John  
 2484 AT Thornhill, Denise M.  
 0313 AT Tillson, Rita  
 2078 AT Tilzner, Thomas  
 0094 AT Tisell, Jane  
 1042 SU Tokar, Susan  
 2440 AB Toorn, Lennart van  
 2401 AT Toorn, Teresa  
 2577 AC Trautman, Bryan  
 2547 SU Travis, David  
 2064 AT Trojan, Bill  
 1017 AT Trumpler, Mark  
 2343 SU Tucker, Mark  
 2429 AT Tumlily-Lazzaro, Cynthia  
 0465 AT Turner, Pat  
 2357 AT Tyrrell, Madeleine  
 2358 AT Tyrrell, Nick  
 1093 AT Valcour, Paul  
 2584 AT Van Camp, James  
 2583 AT Van Camp, Shelley  
 1079 AT Van Heteren, Joanne  
 2578 AT Van den Akker, Nancy  
 1328 AT Van, Anita Dobbs  
 1327 AT Van, Eric M.D.  
 0315 AT Vasak, Thomas  
 2499 AT Veenkamp, J.N.  
 0951 AT Venema, F  
 2099 AT Vick Jr, Cecil

2446 AT Vines, D.J.  
 2339 AT Vink, R.C.  
 2096 AT Visser, J  
 2097 AT Visser, Ja  
 2443 AT Vloet, Heidi van der  
 0836 AT Vohl, Thomas  
 2474 AT Wade, Graham F.  
 2427 AT Wajert, Peggy  
 1355 AT Wallenius, Jan  
 0851 AT Wallis, Michael  
 2486 SU Walton, Ken  
 2561 AT Ward, Anthony  
 2155 AT Warren, Kenneth T  
 0623 AT Warren, Victoria  
 2518 AT Waterman, Deborah  
 2379 AT Weatherall, Bob  
 2378 AT Weatherall, Melanie  
 2338 AT Weide, Sjoerd v.d.  
 2571 AT Weissinger, Robert  
 0715 AT Wessels, Mary Ellen  
 2452 AC Westhead, Karen  
 2451 AC Westhead, Peter  
 2593 AT Whelan, Michael  
 2426 SU Wicker, Guy  
 2558 AT Wilbanks, Caran  
 0709 SU Williams, Betty L.  
 0728 AT Winston, Joan  
 0649 AT Wolkoff, Lewis H  
 2114 AT Wolkoff, Rose Ann  
 0752 AT Wooster, Martin Morse  
 2602 AT Wright-Minnis, Diane  
 0883 AT Zimmermann, Ralf  
 2345 AT Zon, Cecile van

**grafische verzorging:**

**LEGIO** **drukkerij**  
 rijswijk - den haag

**voor al uw drukwerk**  
**070-995757**

## Mailing label

In the left hand corner of your mailing label you'll find a status code, followed by your membership number and the number of the Progress Report (in this case # 2). New members will also receive Progress Report # 1.

The status codes are:

- SU - Supporting membership
- AT - Attending membership
- AC - Attending child under 14
- AB - Attending child under 3

Please note that we cannot accept 'fannish' names as it makes future identification difficult for the ConFiction Administration. You may, however, add a fannish or funny name to your credentials and we'll keep special track of them for printing it on your badge.

## The Flying Dutchman

The second list of the Flying Dutchmen!. Please help us find this person or he will be lost in the Seven Seas. If you see him at conventions or meetings, or if you spot him in fanzines, or if you're acquainted with him, please tell him to get in touch with us. ConFiction wishes him a speedy return to his rightful place on board the Mouse That Roared!

1362 AT Egil Stenseth, Norway



£15 attending  
£8 supporting

*Contrivance, 63 Drake Road, Chessington, Surrey*  
1989 BRITISH SCIENCE FICTION CONVENTION

# CONTRIVANCE



*Anne McCaffrey*  
*M. John Harrison*

24-27 March 1989