

ConFiction

The 48th World Science Fiction Convention

August 23 - August 27, 1990



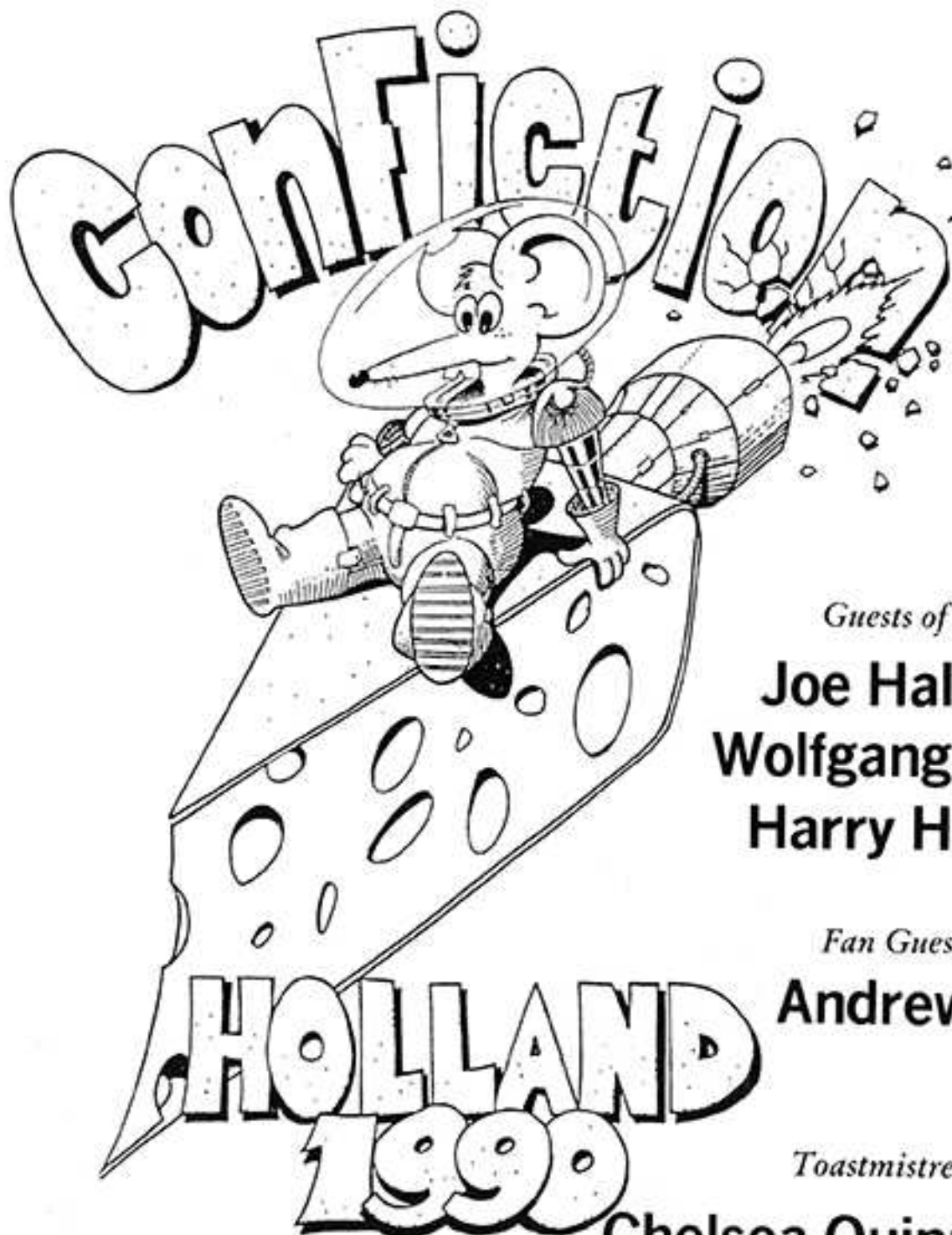
Progress Report 3
Summer 1989

48th World Science Fiction Convention

the Netherlands Congress Center

The Hague, Holland

August 23rd - August 27th, 1990



Guests of Honour

Joe Haldeman

Wolfgang Jeschke

Harry Harrison

Fan Guest of Honour

Andrew Porter

Toastmistress

Chelsea Quinn Yarbro

KLM Dutch Airlines has been appointed official carrier for the 48th Worldcon in The Hague.

WORLDCON 1990 - P.O. BOX 95370 - 2509 CJ THE HAGUE - HOLLAND

Welcome!

Welcome to our Progress Report # 3 and a very warm welcome to all those new members that have recently decided upon joining ConFiction's crew.

In this summer issue we'll take you on a sightseeing tour through The Hague. We even dip into the history in an attempt to give you a real "feeling" about the place in which you're going to spend at least 5 days (and probably more - who wants to miss the opportunity to spend a holiday in Holland as well?). For those readers that have not yet converted to an attending membership, we hope these articles are an extra incentive for action. Besides, converting now saves you money later!

Originally we planned to produce four Progress Reports, but we have changed that. There will be five issues now. Progress Report # 4 will step right onto the heels of # 3, and will be sent to you in November this year. That issue will contain *all* the information about the important issues of Travel and Hotel, complete with booking-forms. It also contains information and forms about the Hugo nominations and Site Selection. Don't miss it!

In the meantime more and more sails are being hoisted. As you can see at the organization list more and more crew members are being signed on. The Programme is taking shape (an unwieldy shape.....) and Operations is...well... doing what Operations is doing best: organizing things nobody but Operations understands. Fan Activities is...ah...fannish, and Financial Administration looks sternly at the department budgets, mumbling about 'extravaganzas' as any financial wizard is wont to do.

That's all for now. Many of you will meet a large contingent of crew members of "The Mouse That Roared" during Noreascon. For that is the Last Worldcon Before..... See you then, or in The Hague!

Tom Scheelings

Contents

Welcome.....	1	Drugs Policy and Medicine?.....	22
List of Advertisers.....	1	Financial Report ConFiction.....	24
Captain's Log.....	2	Geographical Breakdown Membership.....	24
Committee & Staff.....	3	Membership List.....	25
Agent's Corner.....	3	The Flying Dutchman.....	25
Hotel & Travel information.....	4		
Art Show & Dealers Room.....	6		
Membership and Rates.....	8		
Advertisement Rates.....	8		
How to pay.....	8		
For Kids Only... Your Own Con.....	9		
Physical Impairments.....	10		
Questionnaire.....	11		
The Hague: the largest village in Europe.....	16		
Getting Around in the Netherlands: the Twilight Zone of the Strip'n'card.....	18		
A Streetcar Named Desire.....	20		
Parties During ConFiction.....	22		
Fan Programme.....			

Advertisers

ConFiction.....	0
NCSF & Beneluxcon.....	2
The Hitchhiker's Appreciation Society.....	4
Magicon/Orlando in '92.....	7
HOLODECK, British Star Trek Convention.....	9
San Francisco in '93.....	12-15
Mitfahrerkonzerte zur ConFiction.....	17
ConDiego/1990 NASFiC.....	23
Fandom Directory.....	26
Zagreb in 1993.....	27
Wilhelm Heyne Verlag.....	28

Change of Address

Who hasn't heard of the gruesome fate of the captain & crew of the Flying Dutchman? Worse, this could also happen to you! We'd like to avoid this. Therefore we ask you kindly -but firmly- to inform us immediately of any change of address during the next year and a half. If you are planning to move (or if you have already moved), please, notify us as soon as possible. In doing so, you guarantee receiving our Progress Reports and other important information about ConFiction. Just write us a brief letter, mentioning your membership number (if known) and both your former and new address to:

Membership Administration ConFiction

*P.O. Box 95370
2509 CJ The Hague
Netherlands*

Only then can we guarantee you won't be lost in eternity. It is our firm intention to get any passenger safely to our joint destination, and we'll do our utmost to achieve this. But we need your help too. Thanks in advance for your co-operation!

"WSFS", "World Science Fiction Convention", "Worldcon", "NASFiC", "Science Fiction Achievement Award", "Hugo Award", and "World Science Fiction Society", are service marks of the World Science Fiction Society, an unincorporated literary society. The World Science Fiction Society and the World Science Fiction Convention are not related to "World SF, The International Association of Science Fiction Professionals."

"ConFiction" and the Mouse Logo are registered trade and service marks of Stichting Worldcon 1990, a corporate body under Dutch law.

ConFiction Progress Reports " 1989 by Stichting Worldcon 1990 (ConFiction, 48th World Science Fiction Convention). All rights reserved to contributors.

KLM-Royal Dutch Airlines has been appointed official carrier for the 48th World Science Fiction Convention in The Hague.
This guarantees you the best air transport by our national airline.

Captain's Log

Working on and planning a World Science Fiction Convention with a three year timelead plus the bidding phase of at least another two years is quite hard. You are talking about five years in which you have to try to form a team, work together and make the magic happen. Unfortunately, next to the magic of the convention itself stands the real world. So it is with us. Since we published Progress Report # 2 late last year (though most of you received it early this year) quite a lot of things happened with us. We have worked hard on building a stable structure for ConFiction. In that process we had to take leave of our Operations man Nico Klaasen Bos. On behalf of the committee we would like to thank him for his effort over the past three years. Operations will now be handled by a team of Dutch and British experts who have the knowledge and the experience to make this department work. Other departments are also gaining more body - but we still need a lot of help. Help from people with experience, knowledge and

willingness to spend time working with and for ConFiction. As stated in the previous Progress Report we found, that co-operation with other fans is the best possible way to make a World Science Fiction Convention work.

We suggest fans in the U.S.A. to read the hotel- and travel information carefully, that we publish in this issue. We would also like to draw special attention to the information on hotelsituation for "the rest of the world" and the news on the dealers room and the artshow.

We will be attending more conventions throughout the world this and next year. We hope, you will make use of that opportunity to talk to us and let us know, what your wishes are. Basically, we want ConFiction to be your convention and we will listen to whatever you bring to our attention. Thank you for joining us and we hope to see you in The Hague in August in 1990.

Kees van Toorn , Chairman ConFiction

nederlands contactcentrum
voor science fiction

Don't wait to 1990 to join the
NCSF, the oldest science fiction
fan-club in Holland!
And only members get Holland
SF, our bi-monthly clubzine.
Just drop us a note!
Oh yes, see you at ConFiction!

Rob Houwerzijl
Secretary NCSF
Gibraltarstraat 67^{III}
1055 NK Amsterdam

Connection

17th Beneluxconvention
17-19 November 1989
Holiday Inn

Nieuwezijdsvoorburgwal
Amsterdam

The last Beneluxcon before
some...ah...slightly bigger
event in...uh...1990.
Don't miss it!

More information in upcoming
Holland SF and with your local
Friendly Fan.

The Committee

Board	Logistics
Chairman Kees van Toorn	Roger Perkins
Deputy Jo Thomas	Liaison Security Kees Huijzer
Secretary Angelique van der Werff	Security & Medics Kim (K.I.M.) Campbell
Chief Treasurer Robert in 't Veld	Technical Operations Dermot Dobson
Departments	Crèche Carla Blitterswijk
Fan Activities	Trouble-shooter Chris Cooper
Co-ordinator Annemarie van Ewijk	Volunteer reception Martin Easterbrook
Deputy Karin Langeveld	Book Room Ed Heukels
Fan Programme Heiko Cleton	Art Show Len de Vries
Fan Room Maud Cleton	ASFA liaison Ingrid Neilson
Kidcon co-ordinators Pieter & Hetty Smits	Programming
Fans Across the World Karen Naylor	Co-ordinator Jo Thomas
Public Relations	Deputy Theo Hanou
Co-ordinator Johan-Martijn Flaton	Liaison for GeHs Gerben Hellings
Deputy & Progress Reports Tom Scheelings	Programme Items Remco Meisner
Agents liaison Nico Veenkamp	Meetings & Parties Hans van Zonneveld
Conpapers Caroline Mullan & crew	Contact VIP's Simon Joukes
E-mail contact Jacqueline Coté	Masquerade Jan Veldhoen
Financial Administration	Ann Page (UK)
Co-ordinator Paul de Leeuw van Weenen	Lori Meltzer (USA)
Deputy Gijs de Leeuw van Weenen	Special Programming Jean-Paul Smit
Membership Administration	Caren Peeters
Co-ordinator Larry van der Putte	General Programme Leo Kindt
Deputy Wim van de Bospoort	Hugo-Awards Cobi van Hemmen
Site Selection 1993 Roelof Goudriaan	Special
Operations	SFWA- liaison Ian Watson
Co-ordinators Bert Visser (NL)	WSFS Business Meeting Donald Eastlake III
Martin Hoare (UK)	
General Operations Tim Illingworth	

Agent's Corner

Australia Justin Ackroyd GPO Box 2708 X Melbourne 3001	Norway Johannes Berg Tuenger Alle 10 0374 Oslo 3
Belgium Ronald Grossey Bouwhandelstraat 37 2200 Borgerhout	Poland Wiktor Bukato P.O.Box 983 00-950 Warszawa
Canada Yvonne & Lloyd Penney P.O.Box 186 Station 'M' Toronto Ontario M6S 4T3	Sweden Andreas Bjoeklind & Carina Skytt Troskaregatan 53 S-583 30 Linköping
Finland Toni Jerrman Viljelijantie 4-6 D-103 00410 Helsinki	United Kingdom Colin Fine 28 Abbot Road Cambridge CB5 8HQ
France Jean-Pierre Moumon & Martine Blond Villa Magali Chemin Calabro 83160 La Valette-du-Var	United States Marc S. Glasser P.O.Box 1252 Bowling Green Station New York, NY 10274
Italy Patrizia Thiella Via Novara 3 20089 Rozzano (MI)	David Schlosser 7324 Paso Robles Ave. Van Nuys, CA 91406
Japan Masamichi & Michiko Osaka 523, 1-5-11, Inaba, Higashi Osaka Osaka 578	West-Germany Peter Herber Hofrichterstraße 13 5000 Köln 80
New Zealand Victoria Craig 30 Norway Street Kelburn Wellington 5	Yugoslavia Damir Coklin Pregradska 4 41000 Zagreb

Invitation to European WorldCon Visitors

HAVE YOU ATTENDED AT LEAST 4 EUROPEAN WORLDCONS? (CONFICTION IN 1990 INCLUSIVE)? THEN WRITE IN ON MY SPECIAL REUNION CONVENTION. AT CONSPIRACY IN BRIGHTON, UK, I ORGANIZED A SPECIAL ROOMPARTY TO CELEBRATE THE FACT THAT 4 WORLDCONS HAD BEEN HELD IN THE UK. UNDER THE NAME 4 UK.

CONFICTION IS THE SECOND WORLDCON TO BE HELD ON THE CONTINENT, AFTER HEIDELBERG IN 1970. THIS FACT OPTS FOR SPECIAL CELEBRATION. I NAME MY REUNION UK 4+. ANYBODY HAVING ATTENDED 4 WORLDCONS IN EUROPE IS WELCOME TO IT. (CONFICTION INCLUSIVE).

I SHALL WRITE TO ALL 4 UK ATTENDEES AND OTHER THAT I KNOW ARE ELIGIBLE FOR 4 UK+. I, HOWEVER, WOULD BE GLAD IF ALL INTERESTED IN SUCH A WORLDCON REUNION AT CONFICTION WOULD GET IN TOUCH WITH ME.

FRANK R. SMITH, GRIFIN HOUSE, APPLIEDORE HEATH, ASHFORD, KENT, TN 26 2BA, UNITED KINGDOM.

(SUPPORTED BY: KJELL BORGSTROM (SWEDEN), BRIAN BURGESS (UK), PETER MABEY (UK), PHIL ROGERS (UK), JOYCE AND KEN SLATER (UK), INA AND NORMAN SHORROCK (UK), LARS-OLOV STRANDBERG (SWEDEN).

Hotel & Travel Information

We intended Progress Report # 3 to be the main travel and hotel information issue. Due to circumstances beyond our control we can not supply you with the vital information we had wanted to give. But we can explain the situation and provide you with the current status of affairs. Since this is a non North American World Science Fiction convention and the distribution of the available hotel rooms is of vital importance to all attendees, we have worked from day one to ensure a fair distribution system.

Looking at the membership list, we can state that half or more of the attendees will come from the United States of America. What we have done in co-operation with Convention Travel International b.v. in The Hague (which arranges hotels and room allocation) and Holland Approach Inc. in New Jersey (who will handle all American inquiries from both rooms and airtransportation) is to allocate 50% of the available room space to each group of fans. One part is for the United States of America, the other part is for "the rest of the world". This way we are able to guarantee somebody from Austin, Texas and somebody from Rangoon, Thailand a room in the hotel of their

choice, next to somebody from the Hague. There is no need to fear that there will be no rooms available. We have blocked close to 2,000 rooms in several hotels in the Hague in four categories. Prices will range from cheap (bed and breakfast type) to moderately expensive (three star hotels). In most hotels we have been able to block 80 to 85% of the rooms, meaning all hotels used by the convention will be filled with fans. Convention Travel International has negotiated special convention rates for members of ConFiction. Hotels will only be assigned for attending members of ConFiction.

Hotel Booking Forms

We intended to send out hotel booking forms with this Progress Report. The negotiations with the hotels through Convention Travel International in the Hague have been completed and prices are set. Our official American travel agent, Holland Approach Inc. in New Jersey has been allocated his part of the available rooms. Holland Approach and KLM - Royal Dutch Airlines are expecting to be able to have the 1990 air fares soon, and definitely in time for their flyer to be produced for distribution at Noreascon III.

ZZ9 PLURAL Z ALPHA

THE HITCH-HIKER'S GUIDE TO THE GALAXY APPRECIATION SOCIETY

FOR THE LOW RATE OF £4 UK
 £5 EUROPE
 REST OF UNIVERSE £8 AIR MAIL
 £5.50 SURFACE

PAYMENT IN STERLING ONLY PLEASE
 TO

NOEL COLLYER
 ZZ9 PLURAL Z ALPHA
 17 GUILDFORD STREET
 BRIGHTON BN1 3LA
 SUSSEX
 G.B.



DO YOU KNOW
 WHERE YOUR
 TOWEL IS?

As Holland Approach Inc. wants to offer attending members of ConFiction a special package, where both air- and hotelreservations can be made at a favourable price, you will understand that releasing only hotel booking forms now could create quite some confusion. Although American members can only book a room through Holland Approach Inc. it will be worthwhile to check out the package that will be offered.

It is the philosophy of Holland Approach Inc. to offer an attractive package with a pricetag lower than if the components (room - airfare) were purchased separately. How this works will be explained later. Since the air fares were not available at the time of publication Holland Approach could not finalize the package. Hence we have decided to wait with both the release of the hotel booking forms and the package until all the information is available.

Progress Report # 4

This information will be made available to all members of ConFiction in Progress Report 4 - which will be released in November and will then be mailed worldwide. This progress report will be a special edition and will carry detailed hotel information, hotel booking forms, HUGO nomination form (that can be returned to us at a later date), the WSFS Constitution and several package deals, including the one from Holland Approach. Similar packages may be offered by KLM - Royal Dutch Airlines, our official carrier, in various countries. You should check with their sales offices worldwide.

Convention Travel International b.v. in the Hague will make special tours available in Holland and on the continent if enough interest is shown by visitors of ConFiction. There will be a Progress Report # 5 in March with the last information that we will make available to the members of ConFiction. Should the need arise, there will be a special mailing prior to the convention itself.

Convention Travel International

Convention Travel International b.v. (CTI) in the Hague has been appointed to act as an intermediate for the booking and handling of all hotel accommodation, except rooms for American attendees. Through CTI a large number of hotels have been blocked at favourable rates in hotels of four (4) price categories. The hotels are located in the city centre of the Hague, the seaside resort of Scheveningen, the Congress Centre area between the city centre and Scheveningen, and the seaside resort of Kijkduin. To reach the Congress Centre

from both Scheveningen and the centre of the Hague there are regular direct tram services (journey takes 10 to 15 minutes) and a taxi ride is approximately 10 minutes. A regular bus service connects the Kijkduin hotels with the Congress Centre and this takes about 20 minutes (approximately 15 minutes by taxi).

Reservations of rooms can only be made through the hotel reservation and booking form, which will be distributed with Progress Report # 4. No reservations will be accepted over the telephone. All requests for reservations will be dealt with strictly on a first come, first serve basis. The only exception to this rule will be made for the handicapped. There are special rooms in the major hotels and these will be blocked for physical impaired people - for instance wheelchair users. We urge them to fill out and return the form in this Progress Report so we can anticipate in this respect. Deadline for reservations after the release of the booking form will be June 23rd, 1990. Requests for reservations after that date will be accepted, but adequate accommodation can not be guaranteed.

All rooms except the lowest category in price have private bath and/or shower and toilet. Rates are per room per night and include breakfast, service charges and taxes. Categories and prices will be announced in Progress Report # 4. It is hotel policy in the Hague to have a request for hotel reservation accompanied by a deposit of Dfl 250.- per room or to guarantee the room by credit card. No reservation can be made without this deposit or the credit card guarantee. All attending participants who have put down the deposit or the credit card guarantee will receive a hotel confirmation voucher, showing all hotel reservation details as well as the deposit paid less bank cost (if any) and a Dfl 7.50 reservation fee per room. This voucher must be handed over to the hotel reception when checking in and the deposit will then be deducted from the final hotel bill. All members of ConFiction will find the detailed list of hotel category prices, description of location of the hotel and the hotel itself in Progress Report # 4 with the hotel booking and reservation form.

Holland Approach Inc.

Holland Approach Inc. is a full subsidiary of Murray Hill International, Inc. an IATA/ARC accredited travel company for nearly 12 years. Holland Approach Inc. works closely with KLM Royal Dutch Airlines and other airlines, the Netherlands Board of Tourism and the Netherlands Chamber of Commerce in the USA (of which it is

a member) and is primarily involved with promoting and arranging travel for individuals and groups to Holland. In order to convince the potential traveler to go to the foreign event an attractive package must be offered with a pricetag lower than if the components were purchased separately.

An arrangement will be worked out with KLM Royal Dutch Airlines allowing us to offer packages priced lower than usual including the special hotel rates, which are made available through us for the American participant by Convention Travel International in the Hague. Our approach is the "one-stop concept". How does it work? Simple: complete the booking form which will be available with Progress Report # 4 (or at Noreascon III as this has absolutely no effect on the room allocations for the "rest of the world") and return this to Holland Approach Inc. You will be able to choose from various hotels in four categories, choose your flights, indicate form of payment and request tourist information. This system will be backed up by a toll free 800 hot line in the event you have any questions. Our

package will provide you with complete flexibility: you travel when you want (subject to availability) No fixed departure dates.

All payments are in US dollars and we will be able to confirm your rooms immediately (again, subject to availability). You do not have to wait for confirmation from abroad and there will be no hassle with foreign currency checks. Both the package (which includes airtransportation and rooms) or rooms will be made available to all members of ConFiction through the form published in Progress Report # 4 although we do emphasize that rooms will only be available for full attending members. We trust that the above description of Holland Approach and the way it will offer its services to participants of ConFiction provides you with an appropriate impression of our activities. Rest assured we will do our utmost to make your trip to Holland a very successful and enjoyable one. Holland Approach Inc. will be represented at Noreascon III in Boston. If you have any questions, you can contact us there and we will (try to) answer them. Tot ziens (see you) in Boston or Holland.

Art Show & Dealers Room

In this respect we can report that preparations and planning for both the art show and the Dealers' Room are now in full swing. We continue distributing flyers to potential Art Show and Dealers Room participants at various conventions since Nolacon II. Quite a number of people have expressed interest and for both rooms we have made a special mailinglist. Both the Art Show director Len de Vries and the Dealers Room manager Ed Heukels will provide all artists and dealers with detailed information on how to import books and/or art into the Netherlands. In order to assure optimal service to artists and dealers we will work with the Transport and Shipping Geytenbeek b.v., a large renowned

Dutch company and an expert on handling both import- and export movements. This company will provide our Art Show director and Dealers Room manager with detailed information on carnet forms, tax registration, import and export papers and how to work with Dutch customs. Both departments are finalizing their negotiations with Geytenbeek b.v. and this information will then be send out to all people who are on the mailinglist. We will start allocating space to artists and tables to dealers after this information has been send out. This will happen after Noreascon III. We urge all dealers and artists to write to us - if they want the information and if they want to come to ConFiction.

Upcoming World Science Fiction Conventions

1989
Noreascon III
 Box 46
 MIT Branch PO
 Cambridge MA 02139 USA

1990
ConFiction
 P.O. Box 95370
 2509 CJ The Hague
 Holland

1991
Chicon IV
 P.O. Box A3120
 Chicago
 IL 60690 USA



**Dost Thou Seek A Magical Worldcon?
Verily, Orlando In '92 Will Grant Thy Every Wish**

With Great Facilities

The Orange County Convention & Civic Center: 388,000 Sq. Ft. of meeting and exhibit space, almost all on one level; State-of-the-art in every area, from lighting to handicapped access to security.

The Peabody Hotel: Our headquarters hotel, directly across the street from the Convention Center; 58,000 Sq. Ft. of additional function space; four restaurants; breathtaking decor; professional child care; trained mallard ducks.

With Great Accomodations

Over 4,000 rooms blocked at close-at-hand hotels.
Wide range of room rates.
Shuttles to all Orlando attractions.
Free parking at all hotels.

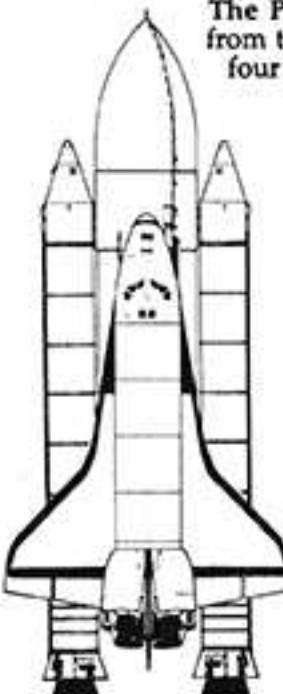
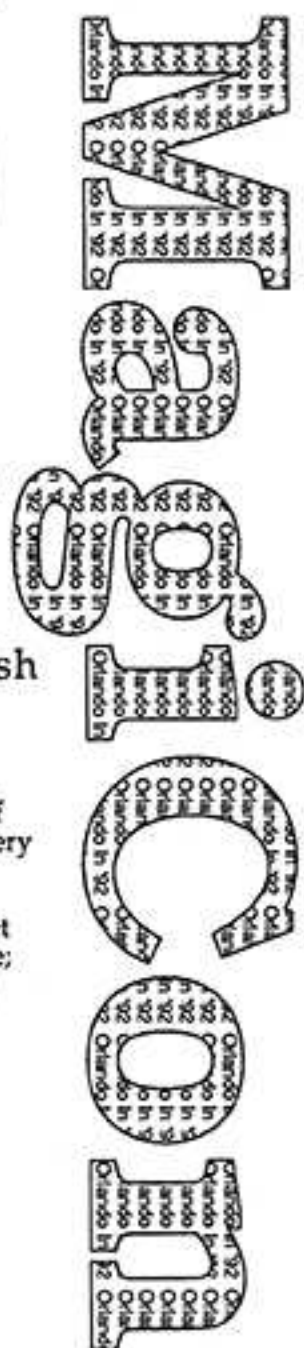
With A Great Committee

Experienced in high level posts at past Worldcons.
Members have founded and chaired regional & local cons.
Solid local base in Orlando and Florida.

And A Really Great Location

2 minutes from Sea World
15 minutes from EPCOT / Disney World
50 minutes from Cape Canaveral

If you'd like to help bring the Worldcon to Orlando, become a **MagiCon / Orlando in '92** presupporter. For just \$5.00 (which will be credited toward your Worldcon membership after we win), you will receive a **MagiCon** button, a subscription to our bidzine, discount prices on our sensational **MagiCon** T-shirt, and a lot of great parties.



MagiCon / Orlando in '92
P.O. Box 621992
Orlando, Florida 32862-1992

Membership Rates until December 31st, 1989

Membership Rates are valid until the date mentioned above, unless extreme changes on the international money market make it impossible to maintain them.

Supporting	US\$ 28.00	UK£ 16.00	DM 45,00	Dfl 50,00
Attending	US\$ 70.00	UK£ 40.00	DM 130,00	Dfl 140,00
Children's admission under 14	US\$ 17.00	UK£ 9.00	DM 27,00	Dfl 30,00
Admission for children under 3	FREE OF CHARGE			

Advertisement Progress Reports Professional Rates :

1/1 page, 190x275 mm	US\$ 160	UK£ 85	DM 300	Dfl 300
1/2 page, 190x136 or 94x275 mm	US\$ 90	UK£ 50	DM 180	Dfl 180
1/4 page, 94x136 mm	US\$ 50	UK£ 28	DM 100	Dfl 100

Advertisement Progress Reports Fan Rates :

1/1 page, 190x275 mm	US\$ 80	UK£ 45	DM 160	Dfl 160
1/2 page, 190x136 or 94x275 mm	US\$ 40	UK£ 25	DM 80	Dfl 80
1/4 page, 94x136 mm	US\$ 25	UK£ 15	DM 50	Dfl 50

All copy should be print ready in black and white. Sorry, we'll have to charge you extra for any processing costs if your ad is not up to the above standards. We offer you a discount of 10% on the total price if you decide to place the same-sized ad in our Programme Book. Deadline for Progress Report # 4 is September 1st, 1989. For Progress Report # 5 it is February 1st, 1990. Deadline for our Programme Book is May 1st, 1990.

How to Pay for Memberships & Advertisements

a. Cash - You can pay cash via the mail by registered letter only. Always state the purpose of your payment in a covering letter. Payments in your local currency can also be made to a representative of ConFiction at conventions, or to our Agents in your country, where possible.

b. Cheque - Cheques should be made payable to "ConFiction, the 48th World Science Fiction Convention" and sent by registered letter only to our mailing address. We accept personal cheques, bank drafts and eurocheques. Our bank account number is: ABN Bank Rotterdam, 50.45.32.928

c. Giro Postal Cheque - We also accept Giro cheques, made out to: Stichting Worldcon 1990,

Den Haag. Our Giro account number is: 23 78 84.

d. International Money Order - Address your IMO to Stichting Worldcon 1990. Again, state the purpose of your payment, either on the back of the IMO or in a separate letter, referring to your IMO.

e. Credit cards - We accept Mastercard (USA), Access (UK) and Eurocard (Europe) only. We also accept credit card payment with signature 'on file'. You can write to us and authorize us to charge your credit card for an amount specified by you in a letter with your signature, card number and date of expiration. Please note: we cannot accept Visa or American Express. Please remember to mention reason for payment.

For Kids Only....Your Own Con (but we need your help!)

Do you like to get away from the grown-ups once in a while? Don't you really like SF conventions that much? Do you hate the idea of staying in that stuffy Congress Centre all day? Then, if you are 4 to 12 years of age, help us organize your own Con.

Yes. ConFiction wants every visitor to be happy. Including you! So, we plan to set up an Extra Programme for children from 4 to 6 and from 7 to 12 years of age. However...we need your help to do so. We call it Kidcon. (Or do you know a better name? Tell us!)

You will have a full day programme, including some of the Main Items. (We are sure for one thing that you wouldn't want to miss the Masquerade). Besides we'll organize special events and items just for you. Of course it will be good fun, because you'll meet many kids, from other countries too! And, for example, we won't stay in the 'boring' Congress Centre all day, where silly grown-ups are doing stupid things. No, sometimes we'll also go out instead.

You can join Kidcon for the day, (9.00 a.m. to 6.00 p.m.) or for just the morning, or the afternoon. Not

for just an hour, though; we might be in the middle of a fun thing when you drop in. Or we might have left the Centre altogether! You can come every day, or for only one day, just as you like. It makes no difference whether you have a Children's Membership or a full Attending Membership. You can join Kidcon, or go along with the Main programme, just as you please.

But we need your help. We have to know how many children will come to ConFiction and if you want to join Kidcon. We want to have a choice of things for you to do or see. For the littler ones, but also for older kids. So if you plan to join Kidcon, write to us and tell us your age. Tell us what sort of things you would like to do. Tell us what you think would be fun. We want you to have a great time at ConFiction too. With your help -and if enough kids join Kidcon- we can make it really space. So, please, write to us...or let your parents write:

ConFiction Kidcon
Postbus 95370
2509 CJ DEN HAAG
The Netherlands

While you're in Europe why not try...

H^dO^eL^cO^k

The 30th British Star Trek Convention

31st August - 3rd September 1990

Stakis Norfolk Gardens Hotel, Bradford, England

Contact: HOLODECK, PO Box 628, Bristol BS99 1TZ, England

Physical Impairments

What's in a physical impairment? At ConFiction we understand it as a physical impediment to enjoying this convention to the full. We are aware that we will not be able to allow and provide for every impairment under the sun, but we are prepared to assist ConFiction members to circumvent some of those impediments - within certain limits. The convention cannot, for instance, supply para-medical assistance (though we can help you hire someone) or provide gopher service at your hotel. We will provide reasonable assistance at ConFiction itself, where necessary, so that convention-goers may visit all function rooms and service areas in the Congress Centre. We will also try to ensure optimal conditions for following programme items and getting information at the con. We may have to charge a small fee for some special services but we won't know one way or the other until all your requirements are in. The general information below as well as the questionnaire will give you an idea of what is possible, and what can be arranged. For practical purposes we have established 3 main categories which cover a great deal of the requirements we expect to encounter: **Hearing & Speech, Vision and Mobility.**

Hotels

In Europe, inexpensive hotels are often old and not convenient for guests with mobility impairments. So don't expect wheelchair-accessible rooms or elevator service at rock-bottom rates. The most convenient hotel in this case is not inexpensive-it is the modern Bel Air, practically adjacent to the Congress Centre (approx. 400 yards/300 m. and no crossings). We are currently checking the availability of rooms with bathrooms fully-equipped for wheelchair users, and are visiting other hotels. You can state wishes on your hotel booking form in our Progress Report No.4 which will be mailed out to you in November 1989 at the latest.

Travel

Ask your travel agent or airline about taking your wheelchair on the plane. Airlines have set rules and procedures. Schiphol Airport offers assistance to wheelchair passengers, if properly notified. Dutch railways provide access ramps to trains on many stations, provided they have been ordered 1 day in advance. Wheelchairs will be placed in the luggage compartment; some trains offer space in the carriage proper. For more information, ask the Dutch Tourist Office in your country (in the USA ask Holland-Approach also). Buses and local trams are not suited to wheelchair transport. They have high entrance steps but offer reserved seating for the physically-impaired and the aged (yellow stickers above the seat). People are obliged to vacate these seats on request.

Wheelchairs are supposed to keep to the footpaths - The Hague and most other towns have sloped kerbs at crossings. Protected pedestrian crossings often have request buttons (at elbow height). Wheelchair mini-buses are available but should be booked in advance and you may find them expensive. Ordinary taxi's take

passengers with folding wheelchairs but like to know this in advance. We are looking into the possibility of offering mini-buses at certain hours from the Congress Centre to outlying hotels, but cannot give definite information as yet.

If you come by car, you'll find that most service stations on the motorways offer toilets for wheelchair users. Most gas stations are self-service, be sure you can handle this; not all offices at gas stations are wheelchair-accessible. Official parking permits for disabled people, issued by Belgium, Bundesrepublik Deutschland, Danmark, United Kingdom, Italy, Sweden, Luxembourg or Austria, are recognised in The Netherlands if displayed on the windshield. You may in that case park in spaces generally reserved for disabled people (sign: Invalidenparkeerplaats algemeen), or park without paying at parking meters etc.

Visually-impaired travellers carrying a special identity card may take one companion (human or animal) on the train free of charge. We will get the proper application form to you if you tell us well in advance (the form should reach Dutch Railways 10-12 weeks beforehand). On trams and buses dogs travel at children's fare (special tickets). Guide dogs need not be quarantined, if provided with a health certificate legalized by your Veterinary Service, and if vaccinated against rabies between 30 days and one year before arrival. Check with your travel agent for details. Finally, Dutch paper money carries a recognition code of raised dots for visually-impaired people, to allow differentiation of the various values.

The Congress Centre

Koos Bruinen, himself a wheelchair-user and our advisor on access for the physically-impaired, visited the Congress Centre and judged its points. Armed with his directions and questions from handicapped ConFiction members, we later went over the building once again. On the whole the Congress Centre is well accessible to physically impaired visitors. Nearly all function space as well as the lounges are reached by a number of elevators. Wide-bodied service elevators with low-placed controls are available for independent wheelchair-users. All doors are wide enough, turns are easy, and doorsteps are at a minimum. The hallways, the stairwell and the central hall, as well as a number of smaller rooms, have a hard, smooth floor covering. The larger auditoriums, the restaurant and the lounges are smoothly carpeted. There is one lavatory fully equipped for wheelchair-users. For the 3 rooms/suites that are not reached by elevator we are studying alternatives. Some lounges have a level 4-6 steps up or down. We do not plan special activities on those levels.

The larger auditoria have a loop system for connecting uphearing aids. In other rooms and halls, front seats will be reserved for those with problems with hearing or visual impairments, as well as an open block for wheelchair-users.

Questionnaire for Physically-impaired ConFiction attendees

This questionnaire will help us get an idea of how many visitors will experience what sort of requirements, so that we can deal with those problems more efficiently. When we have your answers we can work out what services we must or may provide and if necessary at what extra cost. Please send it in as soon as possible. If you have any questions or requests, please, include an international reply coupon. If you anticipate requirements on account of some physical impairment, but do not find it mentioned in this questionnaire, please write to us and explain. We may have a solution. Before filling out this form, please read the General Information above and at page 10 very carefully; it may obviate some of your questions.

Please, delete whatever is not applicable and tick in where appropriate. Copy the Questionnaire if you don't want to spoil your Progress Report.

Requirements of Hearing & Speech-impaired Attendees

- 1. Do you need seating at the front of a hall/room to follow (amplified/non-amplified) speech?
- 2. Can you understand amplified speech (e.g. in hallways)?
- 3. Is a loop system of use to you (what system)? Please specify:.....
- 4. a. Do you: make use of sign language (which)? Please, specify:
- 4. b. Do you depend on sign language (which)? Please, specify:.....
- 5. If your enunciation makes you fear the Dutch may not understand your speech, would a cassette tape with some standard texts in Dutch be of use to you?

Requirements of Visually-impaired Attendees

- 1. Do you need seating at the front of a hall/room to be able to follow what's going on?
- 2. Do you read large letter texts (no more than 5 lines/80 digits to a 32mm wide, 28 mm high square)?
- 3. Can you follow images on a TV or monitor?
- 4. Would texts in Braille be of use to you?
- 5. Will you need some sort of spoken programme information?
- 6. Do you require a guided tour of the Congress Centre at the start of your visit?
- 7. Will you be attending ConFiction alone? With a companion? With a guide dog?
- 8. Depending on your answer to 7: will you need a companion during ConFiction?
- 9. Will you need the railway identification card to ensure free train travel for one companion?

Requirements of Mobility-impaired Attendees

- 1. Can you negotiate steps (4 to 8)?
 - 2. Do you use crutches or a stick? Please, specify:.....
 - 3. Will you need a wheelchair for stretches longer than some 100 yards/100 m. over smooth, hard flooring?
 - 4. Are you bringing a wheelchair, a push model?
 - A hand-propelled model? A battery-driven model? (Please, give approx. floor size:
 - 5. If your answer to 3 or 4 is yes: do you need assistance? Will you arrange for a companion to do the pushing?
- If you are wheelchair-bound:
- 6. Are you able to shift for yourself in a lavatory for the mobility-impaired with the usual supports?
 - 7. Are you able to manipulate elevator controls at approx. hip height?
 - 8. If the answer to 7 and/or 8 is no: will you arrange for a companion? Will you need assistance at ConFiction?
- If so, please specify:.....
- 9. Needs and questions not mentioned above (attach a separate sheet if necessary; please be complete).

Name

Membership no (see cover of this PR)

Address

City

Zip/Postal Code

State

Country

San Francisco in '93



The city of San Francisco is world renowned and needs no introduction.

As for philosophy, we think of the Worldconsm as a true World Science Fiction Convention, not just another large North American regional. The SF community is international in nature; today's Worldcon should reflect our multiple cultures and languages.

To design the structure of the convention to support communication within the SF community, we will be working to streamline the operations and mechanics of the convention to allow fans more time to meet and talk.

We'd like to simplify the programming to integrate the various aspects of fandom; the fanzines, the media, the costuming and others, in such a way as to promote discussion and appreciation. We all share a common root, even if the paths we've followed have diverged.

We aim to provide a setting that supports the needs and wants of fans, and we're proud to be working with a hotel that is eager to co-host this convention. The Marriott, our headquarters hotel, has already agreed to the following:

San Francisco in '93

- 1) No corkage in private rooms.
- 2) A 24 hour coffee shop.
- 3) Extended dining room hours to meet the needs of attendees.
- 4) Keep bars open 10am to 2am (longest hours allowed by law).
- 5) Eliminate any live music in hotel lobby bars and lounges.
- 6) Increase all chocolate supplies in gift shops, restaurants and room service.
- 7) Add additional staff in all outlets.
- 8) Eliminate strict dress codes in all outlets.
- 9) Open pool and jacuzzi on a 24 hour basis.
- 10) Have an elevator repairman on site during the meeting.
- 11) Have an on-site hotel engineer and executive committee member.
- 12) Provide late made service.
- 13) Provide a graveyard shift for waiters and others that are deemed necessary.
- 14) 24 hour trash pickup in affected areas.
- 15) Special trash collection for hospitality rooms midnight though 4:30 am.
- 16) Morning continental breakfast.
- 17) Afternoon and late evening soup and sandwich bars.
- 18) Increase number of towels to all rooms.
- 19) Provide a designated area for posting advertisements, etc.
- 20) Work with your security to provide total coverage.
- 21) Provide large trash cans with bags for each party.
- 22) Assist with noon reservations where possible.

At the **Marriott**, we have 1200 rooms and 100 suites blocked to accommodate the main contingent of fans. In addition, we have commitments from several of the nearby hotels for overflow space amounting to an additional 1400 rooms inside of 1/2 a mile, and an additional 2500 rooms within a mile of the main hotel. These range in price from extremely posh to very economical. Getting into the main facilities will be simple. The non-headquarters hotels are willing to provide a courtesy bus running the loop during the convention.

The **Marriott** is more than a hotel, it includes the adjacent **Yerba Buena Gardens** which features such delights as an **IMAX Theatre** and an ice skating rink.

The committee, collectively, has over 200 years of convention running experience and is committed to the international flavour of an international convention. Some of our people include:

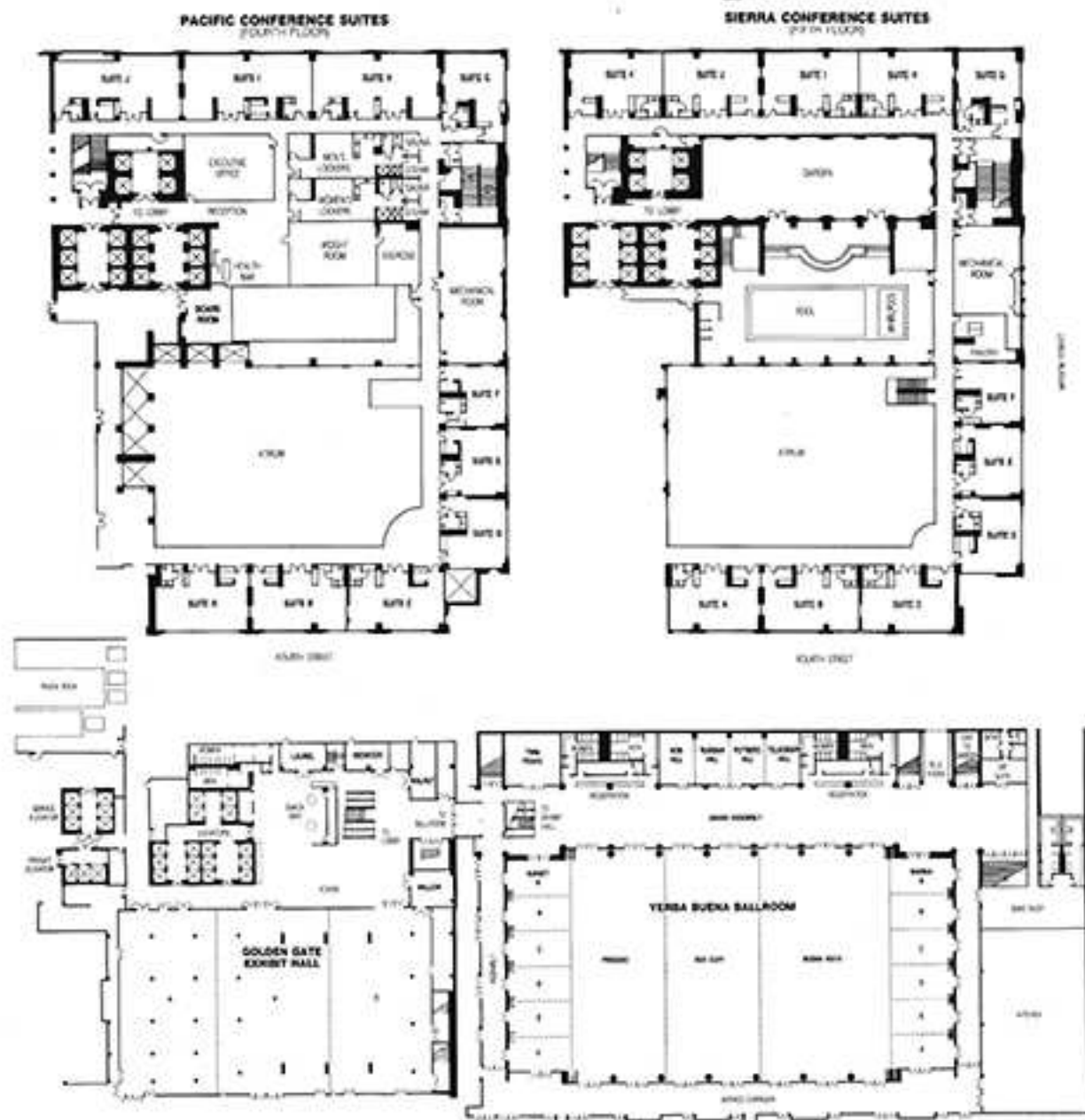
John McLaughlin as Chair, Dan Murphy as Secretary/Treasurer, Terry Biffel, Nancy Cedeno, Lynx and Kitty Crowe, Ctein, Jan Howard Finder, Steve Golden, Mary Mason, Ben and Sasha Miller, Judy Morman, Ray Faraday Nelson, Diana Paxton, Yvonne Penney, Gail Sanders, Rhea and Sue Stone, Terry, Sabre Von Brakat and Michael Wallis.

We also have support from a large number of Bay area and Northern California fans for actual duties during the convention.

If "... a convention is only as good as it's facilities ..."

San Francisco in '93

Over 350,000 sq ft



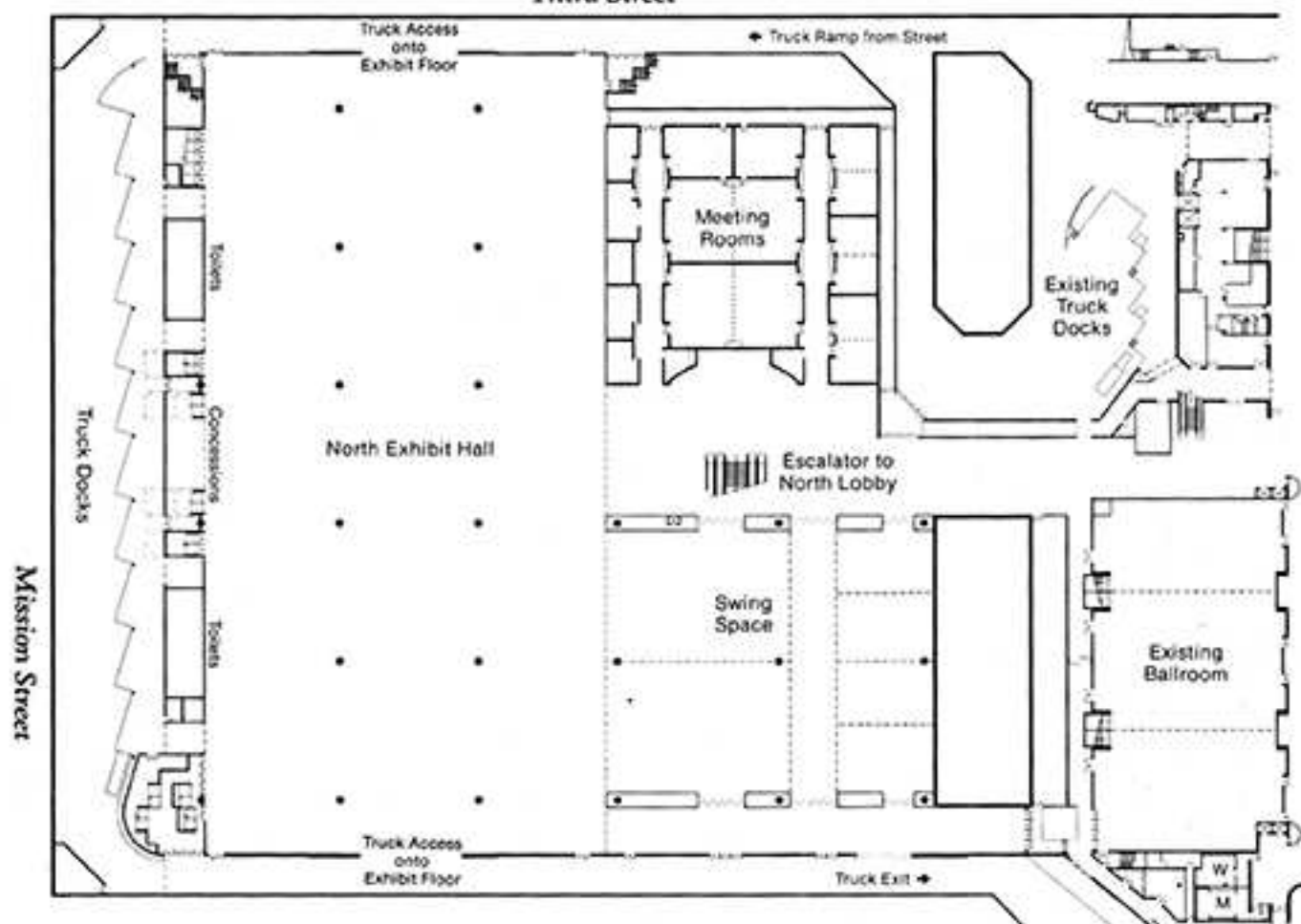
San Francisco Marriott

Golden Gate Exhibit Hall	23,400
Golden Gate Foyer	7,633
Yerba Buena Ballroom	40,000
Grand Assembly	12,543
9 "Small" Meeting Rooms	6,075
Pacific Conference Suites	7,689
Sierra Conference Suites	7,259

TOTAL	104,599

San Francisco in '93

Third Street



Moscone Center Expansion

North Exhibit Hall	138,545	Meeting Rooms	17,514
Swing Space	35,290	- 4 rooms 2,330 ea	
- 2 rooms 9,761 ea		- 2 rooms 1,472 ea	
- 4 rooms 2,667 ea		- 6 rooms 875 ea	
Reception Space	35,500	North Lobby	21,451
		TOTAL	248,300

San Francisco in '93
A Worldcon in a world class city.

Pre-Supporting Memberships: \$5.00
(Choice of kazoo . . . or ear plugs)

The SF in '93 Bidding Committee, PO Box 22097, San Francisco, CA 94122

(Worldcon is a Registered Service Mark of the World Science Fiction Society)

The Hague: the largest village in Europe



History can be as dull as ditch water but even if you're not a student of the past you may like to read about the history of The Hague, for that history is in parts very strange and decidedly unusual.

Take the way The Hague came into being. It was not a bad place to settle, but with so many better places at hand - on the coast, at a river fording, at the crossing of well-travelled roads - nobody thought of setting up a township in the middle of a dense wood - not even monks! But monarchs - they are a breed apart. Count Floris IV of Holland loved hunting. He liked the wood; and the little stream and the large shady pool suited him for his horses, so in 1230 he had a hunting lodge built there. He hedged-in a piece of woodland for a vegetable garden and when he was doing his rounds of the country with all his court in tow, he loved to spend a few days hunting at his lodge, dubbed in the course of time 's Graven Hage (the Count's hedged-in-garden, or hedge) and pompously in Latin: Haga Comitatus. And even now, 's Gravenhage is the official name of what is usually shortened to Den Haag.

Counts didn't have an official seat in those days but towards the end of the century they tended to spend more and more time in 's Graven Hage and so parts of the court moved there on a permanent basis. And Courts attract trade. Bordering the property, a settlement of farmers and tradesmen grew, living on the bounty of the Court. Some nobles

settled there as well. The Count's hunting lodge, in the meantime, had acquired a handsome Hall of Knights for feasts and receptions, the largest secular Gothic building in the world.

The Hof (Court) was built of sturdy stone, for attacks were always to be feared in those days. The ordinary people living outside the Hof had to look out for themselves as best they could. They were not allowed to build walls, nor did they get a town charter. What's more, they never acquired one afterwards, (not until Napoleon, that is...) The towns in the County of Holland, well aware of the political power centered in The Hague, did their best to keep the Counts from ever issuing such a charter, while they loudly murmured (although that was some time later in the 16th century), that The Hague was no fit seat for Government, because it was indefensible without proper walls.

And so The Hague was occasionally razed and burned by bandits, but the Hof stood. Toward the end of the Middle Ages the Low Countries passed into the possession of the Habsburg empire. But when the rule of Philip II of Spain was thrown off, and the Republic of the Nether Lands was founded, its parliament, the Staten Generaal, moved to The Hague to stay. The village-never-to-be-a-town had grown in the meantime, towards the south and east, on the sandy ribs of the old dunes, leaving the low ground in between for roads. This has given The Hague an unusual

rectangular lay-out for such an old settlement. You won't find the curving narrow streets, common in old walled towns. Later parts still show a grid of long roads running from north-east to south-west following the shallow marshy vales, with short connecting roads cutting through the former dunescape. At the end of the 16th century a rather slapdash attempt was made to establish defences at least; a number of canals were dug to enclose the built-up areas. But the 'singelgrachten' were never considered to be a serious defence. Instead of watch towers, windmills arose on the low canal dykes, doing a brisk trade with the countryside.

And so The Hague continued as a village, under the Republic, until Napoleon. When the French army marched on the Low Countries the hereditary Stadhouder (Governor) fled to England and the Dutch in time got themselves a Corsican Emperor and a Corsican King - Louis-Napoleon, the emperor's brother. And the Corsican did what nobody else had thought fit to do: he gave The Hague a formal city charter. It's possible that the Lowlanders just didn't like Corsicans. At any rate The Hague is still thought of as a village, although everybody will mention Napoleon, mumbling that it doesn't count, not really...

And at the restoration of the House of Orange in 1813, this large and rambling village became the official Residence once more, where Kings now lived, at least for part of the year. Their palaces seem modest in

style and size, and were often inherited from thrifty Orange forebears - the William & Mary palace of Noordeinde, or the delightful 17th century Huis Ten Bosch in what remains of the old woods of The Hague.

The Hague was the official Royal Residence and the Seat of Government, but not the nation's capital. That was, and still is, Amsterdam. And although there have been plans to move the whole body politic to Amsterdam this was never realised. Possibly the antagonism between proud mercantile Amsterdam and lowly political The Hague has always been too strong...

Shortly after WW II a new and curious situation evolved: Amsterdam was the capital, The Hague was the Seat of Government, but the monarch, Queen Juliana, choose to live out in the country. The palaces of The Hague stood empty or were, in one instance, rented out as

offices. This changed when in 1980 Queen Beatrix succeeded to the throne. She had Huis ten Bosch fitted up for her family to live in; the palace at the Noordeinde, right in the middle of a busy shop-ping area, has been refurbished as her working palace. Nowadays The Hague is a Royal Residence once again.

The Hague today is a sprawling town-sized village, favouring low buildings, although modern development has put modest sky scrapers right into the ancient centre. But not too many, fortunately. Of the past, medieval sturdiness remains- the Kloosterkerk, the grim prison of Gevangenpoort, the Knights' Hall - along with 17th century elegance - the mansions on Vijverberg, along the Voorhout and the Prinsengracht, and of course, part of the court of the Binnenhof with the delightful Mauritshuis set on the corner of the Court Pond.

The 19th century also saw a lot of building: The Hague boasts a great number of buildings in neo-gothic, art-deco and Jugendstil. The new housing projects in the beginning of the 20th century brought a new style of architecture into being: the School of the Hague, with low buildings, cozy squares and a loving attention to details and ornamentation.

's Gravenhage, village of Counts, Governors and Kings, of parliaments, politics and diplomacy, and at the same time a thriving industrial community, reflects all these elements in the bricks of its buildings and the green of its many parks (it is, if the record still stands, the greenest city in Europe). The Count's Hedge, the little settlement around the hunting lodge, has, in a well-tempered mixture of stateliness and cosiness, grown to become the largest village of Europe.

An alle deutschen Conteilnehmer

Bislang haben sich rund 120 deutsche Teilnehmer angemeldet. Das ist erfreulich. Nun kommt es noch besser, denn bei dieser Zahl lohnt es sich eine

Mitfahrerzentrale

zur ConFiction zu organisieren.

Wer eine Mitfahrgelegenheit sucht oder eine solche bietet, der wende sich bitte an

SFCD

2. Vorsitzender

Jürgen G. Marzi Scharnhorststr. 27
5400 Koblenz Tel. 0261/ 40 93 91



Bei entsprechendem Interesse dürfte es auch möglich sein, eine oder mehrere Pensionen für die deutschen Teilnehmer anzumieten.

Selbstredend ist dieser Service kostenlos und gilt für alle Fans.

SFCD - immer eine Idee mehr...



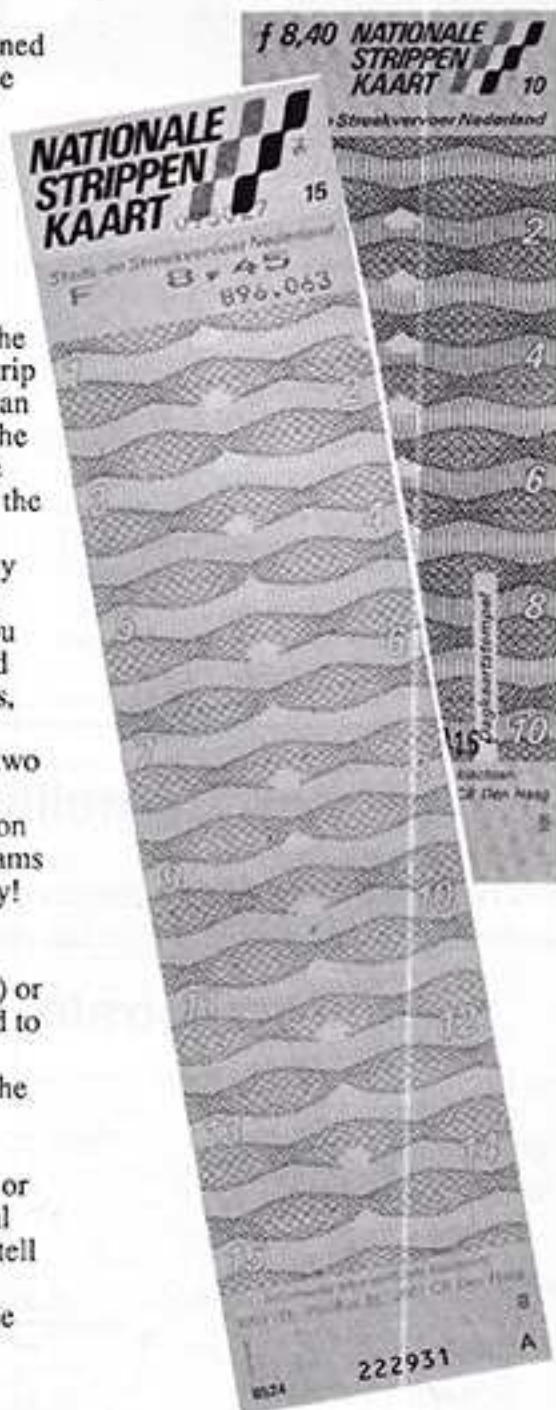
Getting Around in the Netherlands: travelling in the Twilight Zone of the Strip'n'Card



This country has one of the densest motorway networks in Europe. There's no toll (except at some tunnels) and the roads are good, so you might like to drive. But our older cities and towns were never designed for modern traffic, so on the whole you'd do well to stick to public transport while staying in The Hague. The local public transport ticket, called a 'strippenkaart' (strip'n'card), is bought from the driver or, at a discount, at post offices, railway ticket offices and most tobacconists. The strips on the card are stamped on entry - one strip for every zone you travel in, plus an extra "for the road". Going from the Congress Centre to the city centre you travel in two zones, so stamp the third strip (in the yellow ticket machine, or with the driver). Many stops have a zone map, otherwise ask your driver. Under 4 zones you can take buses and trams back and forth within your number of zones, up to one hour after the time stamped. You can also stamp for two or more passengers on one ticket. Get yourself a strippenkaart as soon as you arrive - they're valid on trams and buses anywhere in the country!

Taxi's can be found at taxi stands (and always at the railway station) or can be phoned for. It's not allowed to hail them in the street. V.A.T. is added onto the fare at the end of the ride. For those who prefer to exercise, there's walking (The Hague is a pleasantly green city), or you could rent a bicycle. The local Tourist Office, called 'VVV', can tell you where to rent them. Bicycle lanes are marked with a dotted line and a bicycle painted on the road surface. Proper bicycle roads are separated from heavy traffic by a kerb. You can recognize them by a blue round sign with a bicycle, or a sign saying "rijwielpad". Don't drive into them, car owners! And don't stroll on them, as they are used by racing bikes and mopeds as well, which could cause nasty accidents.

Many trains run from The Hague Central Station (CS) or Hollands Spoor Station (HS) to other parts of the country. Amsterdam is only 45 minutes away, from both stations, and there are trains 3-4 times an hour. Leiden (from HS) is only 10 minutes away. Delft is 5 minutes from HS, or you could go by tram!



Shopping

Keep in mind that shops close at approx. 5.00 p.m. (on Saturdays) and at 6.00 p.m. (Monday to Friday). They are never open on Sundays. In the resorts of Scheveningen and Kijkduin some (food) shops are open in the evening and on Sundays, but prices are steep. Frederik Hendriklaan, a busy shopping thoroughfare, is only 10 minutes' walk from the Congress Centre, and offers a variety of cheap and/or fresh produce shops. The larger supermarkets sell health foods (e.g. Zonnatura or Reform). They also sell beer, wine and other low-alcohol beverages (to over-16's only), and tobacco products. Beware: Dutch beer has an alcohol content of 5% vol., often higher than what foreigners are used to; this also goes for local Heineken! If you like yours weak, ask for low-alcohol "Light" beer (0.5% vol.). In supermarkets you are obliged to use the carts or baskets provided. The cashier has the right to inspect your bag at the check-out. Purchases are not packed for you, so bring a shopping bag, or pay for a plastic carrier bag. Many other shops, though, give you plastic carrier bags with anything you buy.



Tipping and haggling

We don't tip heavily in this country. Many services have a fixed price (cloak room, toilets etc.). It is more or less expected to add a 10% tip to a restaurant or cafe bill or taxi fare, but if you don't wish to, you can get away with it. In hotels you tip on the spot for extra services. Prices in shops are fixed and should be displayed; per item or, in food shops, per 1000 grammes, that is 1 kilogramme. Some amount of haggling is not unusual in lumber shops, at antiques' fairs etc.

Money

Dutch money is very colourful (rather like Monopoly money), with pictures of famous Dutch people, birds, flowers or lighthouses. There are bills of Dfl 5.00 (green), Dfl 10.00 (blue), Dfl 25.00 (red), Dfl 50.00 (yellow), Dfl 100.00 (brown) and also of Dfl 250.00 and Dfl 1,000.00. We have currently six different coins, 5 cents (brass), 10 and 25 cents, 1 guilder, and Dfl 2.50 (silver coloured) and a shiny thick brass coin of Dfl 5.00. The 10 cents piece is very small. The 25

cents and the guilder are handy for parking meters and pay telephones. Not all coins have the same design, so don't think you are being cheated. They may have Queen Beatrix or Queen Juliana on the one side, and sometimes both. 1 Cent coins are out of circulation, but goods are still priced in cents. At the checkout the total is rounded off (under 3 and 8 downwards, otherwise upwards).

You can pay in the usual manner with credit cards (shops and restaurants have signs saying which cards they take) but you cannot pay bills with travellers cheques; they'll have to be cashed first. Most hotels will cash them. Banks close at weekends (though not at The Hague Central Station and Schiphol Airport). You can pay for purchases with Eurocheques and the Giro Cheques issued in several European countries, so check the instructions.

A tip: copy this article and take it with you when travelling to ConFiction. It will help you get around in the Netherlands on the first day of your arrival. See you in 1990!

ZAGREB IN 1993



Worldcon In Zagreb
c/o SFera
Ivanićgradska 41 A
41000 Zagreb, YU

ConFiction wants You!

'cause a Worldcon needs lotsa fans to fleshen out the Programme, to help things running as a gopher, and to have fun all the way. Drop us a note if you want to offer your help!

Confiction
P.O. Box 95370
2509 CJ The Hague

See you in Holland in 1990!



A Streetcar Named Desire...

A One Hour Tour through The Hague



Some people are culture buffs. As soon as they pay for their ConFiction memberships, their minds start to work somewhat like this... The Netherlands... Aha! Rembrandt and Vermeer! Or, if more impressionistically inclined, Oho, Van Gogh! The lovers of the picturesque will have started dreaming about strolls along the 17th century Amsterdam Canals, or discovering Blue Delft China in its native setting, or shooting perfect pictures of gaily green and white painted windmills in the perspective of absolutely flat meadowland - try catching 20 of them at Kinderdijk in one colour slide! Thus the eternal travellers, art lovers and devotees of history.

But there is a different breed of convention visitors, those who come to conventions only to meet their friends, and never poke their noses out of doors for the whole duration, so that the con might just as well be held on the North Pole, as in their back yards, for all they see of the location. These fans now face a dire challenge. It's all right to go to a worldcon in your own country and ignore the local sights. But wait till your friends and relations catch on to the fact that you are going to Europe, the Ancient Continent. Before you go, they'll bore you to death with all the things you absolutely must not miss. And when you get back they'll bombard you with questions about what you have seen. And then what'll you do? You don't want to strain the relationship with your loved ones. On the other hand, you don't want to

strain yourself sight seeing for the sake of those back home... The Congress Centre concentrates all ConFiction activities in one spot, so the only time you'll be outside is travelling to and from your hotel. But that will be late at night or at dawn, and even if there were much to see, what condition will your eyes and brains be in anyway? Let us offer you an ingenious and practically painless solution. All it takes is one (1) hour away from the convention, a very little money, and a copy of this article. First buy a "strippenkaart", the universal ticket for all local transport in the country - buses, trams and underground. Strippenkaarten may be on sale at the Congress Centre. This is still under negotiation. They are available almost anywhere, though.

Ready? Right, leave the building, walk straight on to the second set of traffic lights, cross, and position yourself at the tram stop. In a few minutes a tram will arrive from your left. If it's a number 8, board it, holding your strippenkaart at the ready. You will be travelling in two zones, so stamp the third strip. Check the printed time - you now have one hour exactly to do your travelling. (Please, read also the article in this PR: The twilight zone of the Strippenkaart). Take a seat on the right hand side facing forward.

The tram is now travelling through the Scheveningen Woods, along the track of an old toll road, the first to be cut through the land that lay between The Hague with its

Court, and the fishing village of Scheveningen. It was designed in the 17th century by Constantijn Huyghens (brother to the scientist who invented the pendulum clock) - chief advisor and private Secretary to three Stadhouders in a row, town planner, composer, musician and poet.

Wait till you're clear of the trees. On your right you can see the spires of the Peace Palace, built at the beginning of this century in a fantastic mixture of neo-styles, to house the International Court of Justice. If you had the time you could stroll in the park or take a guided tour through the building, where art deco and Jugendstil strive for attention. The tram will stop right in front, very obligingly, to give you the best of views. And then goes on again, taking a few corners and rounding a monument with some statuary groups, through a stately 19th century quarter. Now the tram crosses a picturesque canal and plunges into the centre. Pay attention here. In front of you the street pinches in from the left. Here stand the remains of a medieval monastery, the Kloosterkerk, a squat, brick church but with a fine organ. Look past it quickly, to your left. This is Lange Voorhout, with beautiful 17th and 18th century noblemen's mansions. On the roads on either side the rich and noble would stroll or ride or drive out, to see and be seen. No one could drive or ride on the path beneath the trees in the old days, except the Stadhouder. Today, only the Queen has this right. But glance to your

right, fast! In the corner you're sweeping past is a gem of an 18th century town palace by Daniel Marot - now the seat of the Council of State. Now if you were to get out, but of course you don't... you could walk through the courts of the modern annexe right across from the Kloosterkerk, past the preposterous neo-gothic concert hall of King Willem II, to come out at the back of the Marot palace, where you'd find the William & Mary Noordeinde Palace right in front of you. To the left and right stretches the most fashionable but very friendly shopping street in town. But no, ride on. And look to the left. A rectangular stretch of water, once the Counts of Holland's horse pond, alongside which are ranged the Government buildings, the Binnenhof. A quick glance to your right - the brick gate with the gabled house is Prinsengate, Gevangenpoort, with its dungeons and torture chambers quite intact and well worth a visit, horror fans.

The tram plunges on, one stop, two stops and you're at the Spui. Now take a daring step. Get out! No, it's all right. Look first left and then right, and cross to the tram stop opposite. Turn, and right in front of you there is the 16th century Nieuwe Kerk, or 'New Church', the first house of Protestant worship to be built especially for that purpose in The Hague. Its beautiful proportions and lofty interior have preserved it against the onslaught of the 20th century. It is now a concert hall. It may tempt you to cross back again and have a look, but no, from your left a number 9 tram is approaching. So board it.

Remember your strippenkaart is still valid, so just take that right hand seat again. Number 9 retraces number 8's tracks till the Binnenhof, then turns right, along Vijverberg. More fine buildings to your left, another view of the Binnenhof, and of the square 17th century mansion standing out in the water at the very end - the Mauritshuis, which houses Rembrandts and Vermeers and other 17th century Dutch paintings. On the opposite side, you'll find a gigantic grey building with camera's mounted on the outside. This is the United States Embassy. The tram ambles on, past the Korte Voorhout (at straight angles to the Lange Voorhout we saw a few minutes ago). On Thursdays it houses a thriving antiques' and curiosa market. On it goes to the left. On your right across the canal, you'll see a green, the traditional fairground Malieveld, named after the wooden mallets used in an ancient game called "kolf". It may well have been the forerunner of Golf as we know it, and thus the oldest golf course in the world!

The tram rumbles on, past stately 18th and 19th century houses and modern additions. A few minutes' ride will bring you to a graceful viaduct. If you were to get out now, at the first stop, a 12 minutes' walk could take you back to the Congress Centre and the Convention. Or you could go visit the miniature city of Madurodam, a treat to children but also a very handy way to get acquainted with all the important buildings in The Netherlands, beautifully executed on scale. Saves trips to other places, right? But stay with number 9. It does a spectacular switch across the

canal and continues up a shady avenue. To your left on a side street lies a small hospital, built according to anthropo-sophical tenets, in the shape of a beached whale: the Rudolf Steiner Clinic. A bit further on, there's a nice panorama of the Westbroekpark on your left, but to see the famous roses you'll have to get out again... Don't do it. Remain glued to your seat to the end of the line. You are in Scheveningen: former fishing village, now a booming resort. The Kurhaus, in front of which you're decanted, is proper 19th century pomp and circumstance. It houses a gambling casino. Now, get out your pocket money, raid one of the many souvenir stalls and get picture postcards of all the places you have seen or might have seen. You can get stamps here too. If the trams had a fast run, there may be time left for a coffee or a quick nip across to have at least one look at the North Sea. You may even see some of the fisherwomen of Scheveningen, in their bombazine skirts and starched linnen working caps, or walking out in their finely pleated muslin caps, stretched over a frame of solid gold or silver.

All done? Seek out the number 8 tram again. (Number 7 is alright too!) It starts right here, so you can't go wrong. Your ticket is still valid, so just board and take any seat. In a while number 8 will start up, taking you smoothly and swiftly back to the stop where your tour started. The Congress Centre and ConFiction are waiting for you. Now relax; it's all over and it was worthwhile, right?

Parties during ConFiction in the Centre

As we have stated before it is our aim to make the Congress Centre really the centre of all events. This also includes parties and other large activities. As hotels are scattered throughout the city and parties are an important social element at Science Fiction conventions we have negotiated special rates with the Congress Centre. Because of this we are able to offer both soft drinks and beer as well as hard liquor at prices which are in some cases lower or comparable to prices one would have to pay in a supermarket. Distribution of space and the availability of these special prices are at the discretion of the board of ConFiction, its appointed party-liaison Hans van Zonneveld and the responsible catering manager of the Congress Centre. Due to this setup it will not be possible to bring in any sort of beverages

or food into the Congress Centre. These are strict rules which will be enforced. Should you try to bring in beverages you must be aware that you will be facing a high corkage that will be collected on the spot. If you are planning to have a large and/or open (bid)party, please let us know. Space is limited and usually there is more demand than supply of space. If you need space to throw large (bid)parties, please send us a letter. We need to know why you want the space, how many people you expect and for which nights you would need the allocated space. We will make information available to interested parties upon request. Book early, assure your group of the space and with your help, we can make this work.

Fan Programme

Fan Programming is already well on its way, but you don't suppose we'll lift the secret veil at this stage, do you? We can tell you that we'll have the usual, as usual: there'll be facilities for filking, hall costumes are encouraged, we'll have a fanzine table and a repro room for on-the-spot zine production. Fan organisations and bid committees will find a convenient soap box (or stall) at our Fan Market. And of course we'll have a relaxing Fan Lounge (what the Americans call "Con Suite" and the British "Fan Room"), with a bar, and probably some food laid on too.

In the Fan Lounge we are staging Fan Meets Fan International, your chance to find Canadian, Finnish, Belgian or Timbuctoo fans. We'll keep this as informal as possible, but we are giving a certain amount of structure to this free-for-all,

because we expect more nationalities than is usual at worldcons. We want to make sure you won't miss a fandom you particularly want to meet.

We are keeping strict silence for now on panels, shows and surprise lectures, but we are planning some tricky fan contests and silly fan games, for our Fanolympics programme. In a more serious vein, but not so serious as to dampen the fun, there's Fan Academy, a series of workshops, lectures and panels, where fans can "study" the arcane craft of fandom.

Maud and Heiko Cleton, veterans of Dutch fandom, have come back in out of the non-fannish outer darkness, to head Fan Lounge and Fan Programme. Next time there'll be some stuff under their by-line.

Drugs Policy...How but about medication?

In our previous Progress Report we told you that the Dutch customs are very keen to arrest anyone trying to smuggle drugs into our country. Don't do it!!! Don't even think of it!!! Spoiling your time in jail (gaol) and paying a stiff fine wastes your holiday and money.

You can, however, take any kind of medicine into the Netherlands. Just have a statement on you from your doctor, signed by him with his/her

name and address, stating that you are using the medicines you are carrying. A prescription in fact. This is not only necessary to import the medicines you might need, but also a sort of security for yourself. If Murphy's Law attacks your luck and anything unfortunate happens, an accident for instance, the Dutch hospitals can help you immediately, knowing that you are using special medication.

Con Diego

The 1990 NASFIC

August 30 – September 3, 1990

The Omni Hotel at Horton Plaza

San Diego, CA

Guest of Honor:

Samuel Delany

Fan Guest of Honor:

Ben Yaloz



Membership Rates:

Until Jan. 1st, 1990	\$65.00
Jan. 2nd, 1990 to July 1st, 1990	\$75.00
At the door	\$85.00
Supporting Membership	\$25.00

ConDiego/NASFIC 1990
P.O. Box 15771
San Diego, CA. 92115

No mail-in memberships after July 2nd, 1990

Financial Report ConFiction

Fiscal Year 1989 - May 1st, 1989
(all amounts in Dutch guilders)

Inventory	2548,68
Cash	125,50
Cash foreign (Dfl)	2581,80
Bank (ABN-Dfl)	7229,28
Bank (USS in Dfl)	40527,69
Bank (UK£ in Dfl)	41326,44
Bank (Can\$ in Dfl)	1571,40
Bank (DM in Dfl)	99,00
Giro account	5383,91
Accounts receivable	5324,13
Total Assets in Dfl	106617,83

Expenditures

Banking fees	591,00
Office supplies	160,00
Postage	1532,02
Printing Progress Reports	5830,00
Total	8113,02
Liabilities	
Congress reservation '85	3041,22
Congress reservation '86	19723,19
Congress reservation '87	24025,03
Congress reservation '88	26578,32

Total expenditures/liabilities 81480,78

Income

Revenues Conspiracy	68708,47
Attending members '88	35495,44
Supporting/Child members '88	11990,95
Presupporters 1985	1710,00
Presupporters 1986	9735,00
Presupporters 1987	5995,00
Presupp's via agents '85	1740,00
Presupp's via agents '86	599,71
Presupp's via agents '87	824,56
Est. Sup. members 1987	158,40
Est. Att. members 1987	18371,95
Bid loans Committee members	21372,04
Advertisements	239,20
T-shirt sales	25,00
Interests	737,39
Kruisposten	30,00
Attending members '89	9572,10
Children/babies '89	739,40

Total income 188098,61

Total expenditures 81480,78

Total assets 106617,83

Geographical Breakdown per country as of May 1, 1989

Australia	55	Ireland.....	4	Poland.....	1
Austria	3	Israel	3	Saudi -Arabia.....	1
Bahamas	1	Italy.....	10	Spain.....	2
Belgium	24	Japan.....	11	Sweden	33
Brazil	1	Malaysia	2	Switzerland.....	3
Canada.....	63	Mexico.....	1	United Kingdom.....	553
Denmark.....	12	Netherlands.....	174	United States	1,190
Finland.....	16	New Zealand	4	West-Germany.....	92
France.....	12	Norway	35	Yugoslavia	7

Total Membership 2336

Membership List from 15/10/88 until 23/05/1989

Check your name!

Please, check your membership status. Your address label (on the cover of this Progress Report) bears your membership status at the moment PR # 3 was mailed.

Status mutations

New members who joined between October 15th 1988 and May 23rd 1989 or members whose status changes between these dates. Should you find any errors or misspellings, do not hesitate to write us and we will correct this.

02751 SU Agrawal, Bobby
02758 AT Amies, Christopher
01209 AT Anderson, Rolf
02802 SU Anderson, Michael
02707 SU Andreasson, Martin
02739 SU Aulbach, Karl E.
00546 AT Baldwin, John T.
00614 AT Bartlett-Sloan, Kirby A.
00613 AT Bartlett-Sloan, Marie
02631 AT Baynes, Stephen
01169 AT Bedard, Valerie
01142 AT Bell, David
00189 AT Belty, Neil
02716 AT Birkhead, Sheryl L.
02434 AT Bjorklund, Andreas
02790 AT Boxall, Terence Alan
02788 AT Boxboro Fandom,
02668 AT Braiter, Paulina
02688 AT Breebaard, Leo C.
02776 AT Brown, Pat
02799 SU Burak, Liz
02674 AT Buyl, Gwendolyn
02717 AT Cadigan, Pat
01481 SU Cady, Kathie
02733 AT Camp, Donna
02222 AT Card, Peter
02719 SU Carey, Douglas S.
01170 AT Champetier, Joel
02627 AT Cholewa, Piotr W.
02632 AT Clark, Stuart
00579 AT Clemens, Sarah
02655 SU Cohen, Mark
02726 AT Colliander, Toomas
02651 AT Collingwood, Susan
02705 AT Cote, Jacqueline
00907 AT Council, Wendy Lou
01081 AT Counc, Georges Count
02764 AT Coxhead, Jonathan
02694 AT Cray, Paul Michael
02766 AT Crick, Simon
02689 AT Curtis, Ian
02684 AT Dam, H.F. ten
00263 AT Davies, Malcolm
02682 AT Davies, Robert Lyn
02759 SU Dawe, Maryah Leslie
02753 SU Deamaley, Roger
02774 SU Demario, Julie
02773 AT Denman, Christopher J.
02702 AT Drexler, Marc A.
02734 AT Eilhan, Peter
02741 AT Ellenmeier, Martin
00938 AT Elworthy, David
02686 AT Erhardt, Ernst
02687 AT Erhardt, Evelijn
02476 AT Evenhøj, Paul J.
02696 AT Ewing, Allison
00417 AT Falkenstein, Michael
02633 AT Feinson, A.C.
02704 AT Ferman, Audrey
02703 AT Ferman, Edward L.
02779 AT Figg, Mike
02738 AT Fischer, Brigit
02667 AT Fitzsimmons, Jon-M.
02666 AT Fitzsimmons, Michael
02695 AT Frihagen, Anders
01634 AT Garratt, Peter T.
02630 AT Gepfert, Elsbetha
00161 SU Gijzen, Wim
02652 SU Gilliam, Richard
00289 AT Glasser, Marc S.
02780 SU Gordon, Margaret C.P.
02769 AT Grier, Hendrik A.M.
02675 AT Grieves, Brian
02745 AT Groenewegen, Coets
02796 AT Groot, J.C.M.J. de
00426 AT Grossey, Eric
00425 AT Grossey, Ronald
02638 AT Grover, Steve
02657 SU Grundy, Cate
02482 AT Hahn, D. Auriette
02644 AT Hamalainen, Timo-Jussi
02777 AT Hancock, Kay
02743 AT Hanscon I,
02744 AT Hanscon II,
02746 AT Harrison, Ed
01685 AT Harrison, Moira
02767 AT Harrison, Susan
01680 AT Harrison, Todd
02665 AT Hart, M.R.
02622 AT Heal, Penelope Sans
02797 AT Helder, Michael
02641 AT Helasvuo, Antero
02642 AT Helsingius, Mika
02659 AT Hendriks, Dia
02697 AT Hepburn, Alasdair
02700 AT Hipp, Scott
02720 AT Histic Jr, James M.
02721 AT Histic, Debra M.
02664 AT Hofmeister, Rainer
02620 AT Holmes, Dave
00330 AT Holmstrom, Ahndera
02690 AT Hummel, Franklin
02677 SU Hunger, Jamie R.
02643 AT Hyvaninen, Otto
02645 AT Ijas, Jyrki
02748 AT Irving, Peter
02727 AT Isokoski, Kimmo
02762 AT James, Richard
02728 AT Jerzman, Marko
02781 AT Jewell, Samantha
01735 AT Johnson, Todd
02708 SU Jonsson, Gunilla
00368 AT Kail, M.R.
01201 AT Kasvi, Jyrki
02801 AT Key, Andrew
02195 AT King, Vicki
02712 AT Klingstrom, Ulf
00972 AT Kobe, Ray
02676 AT Kovacs, Thomas
02722 SU Kovalick Jr, Richard
02629 AT Kowalski, Andrzej
02723 SU Kube-McDowell, Michael
02496 AT Kubler, Bernhard
02639 AT Kuusimäen, Eya
02240 AT Lake, Christina
02724 AT Layman, Charles
02735 AT Lazar, Judy
02714 AT Leeper, Evelyn
02715 AT Leeper, Mark
02729 AT Lehtonen, Kimmo
02646 AT Leisti, Teemu
01145 AT Lindsay, Alex
02800 AT Lloyd, Justin
00753 AT Lockhan, M.L.
02680 SU Lockridge, Jeff
02681 SU Lockridge, Kimberly
02640 AT Loggen, M. van
01780 AT Lokketangen, Edvard
02793 AT Loon, Cor van
02782 AT Loose, Hans
02785 AT MacDonald, Brian
00190 AT MacDonald, Bruce J.H.
02768 AT Macrae, Jamie
02730 AT Maenpää, Juha
02765 AT Mainprize, John
02661 AT Maki, Kumiko
02662 AC Maki, Kyoko
02660 AT Maki, Shukichi
02754 AT Marriot, Chris

02771 AT Maikens, P.
02750 AT Maughan, Robert
02752 AT McCafferty, Anne
02736 AT McCurry, Sharane
02706 AT McIntyre, Vonda N.
02786 AT Mee, Lawrence
02663 AT Miklis, Franz H.
02618 AT Milner, Rod
00578 AT Miranda, Vincent
02784 AT Mittenhaw Hodge,
Anthony Neale Gerald
02626 AT Molloy, Michael
02650 AT Moor, David
02224 AT Moxey, Simon
02636 AT Muisen-v. Blitterswijk,
Carla
02635 AT Muisen, Rob
02775 AT Nanson, Philip
02757 SU Newman, Joan
02756 SU Newman, John
00762 AT Newton, Barry L.D.
00677 AT Newton, Judith
02725 AC Newton, Meridel H.
00718 SU Niebuhr, W. David
02737 AT Nijerhuis, Paul P.
01044 AT Nolin, Jody
00957 AT Nooyens, C.A.J.
00195 AT North, Gytha
02791 AT Olsa, Jaroslav
02656 SU Parisi, John
02623 SU Parkin, Linda
02634 AT Parkins, Richard E.J.
02778 AT Pearson, Nigel
02654 AT Pentland, Alison E.
02305 AT Percival, Maggie
02304 AT Percival, Mike
02678 SU Perkins Jr, Frank
02709 SU Petersen, Michael
02619 AT Peyton, Arlene
02621 AT Peyton, Roger
02718 SU Piero Carry, Mary
02789 AT Plumpton, Norman
02787 AT Poe, Stephen D.
02760 SU Porter, Jean
02761 SU Porter, Jim
02798 SU Reed, Martin
02223 AT Reen, Nicola
02683 AT Rees, Mandy Louise
02720 AT Richards, Anthony D.
00117 SU Rittenhouse, Jim
02772 AT Robinson, Gay
00455 AT Robson, Nigel
02329 AT Rooy, T. van
02692 AT Rotenacker, Gerd
02658 AT Russell, Simon
02794 AT Ryder, Brendan J.
01177 AT Ryder, Helen
02647 AT Salminen, Harri
02731 AT Salminen, Juha
02732 AT Saren, Ari-Matti
02742 AT Schnabel, Uwe
02693 AT Schweizer, Hubert
02036 AT Shibano, Sachiko
02035 AT Shibano, Takumi
02701 AT Shinya, Kibe
02637 AT Sidoli, Edward
00945 AT Simpson, M.J.
02435 AT Skyt, Carina
02672 AT Sptael, Marc
02673 AT Sptael, Rene Marc
02679 AT St-Pierre, Sylvain
00277 AT Steeg, P.F.
02685 AT Sullivan, Alan J.
02806 AT Suter, Francois
02163 AT Swiatek, Erik H.
00327 AT Sykora, I. Dougal
02628 AT Sylwanowicz, Agnieszka
01973 AT Szczepaniak, Eibel
01974 AT Szczepaniak, Timothy P.
02710 AT Tapper, Siv
02699 SU Testa Jr, John P.
02698 SU Testa, Emily Jo
02740 AT Thadewald, Wolfgang
02763 AT Thane-Clarke, Paul
02624 AT Thompson, Peter
02749 AT Thurston-Irving, Susan
02653 AT Tibbets, J.R.
02755 AT Trasker, John
02343 AT Tucker, Mark
02648 AT Turunen, Tarmo
02691 AT Tyma, Marshall B.
02803 AT Uhlin, Lennart
02649 AT Vanhala, Harri
00424 AT Vanhecke, Johan
02671 AC Vanoppen, Annelies
02783 AT Vine, Richard
02670 AT Vollenberg, Harrie
00858 AT Voikamp, E.
00924 AT Waggott, John 'The Wag'
01261 AT Wagner, Roland
01243 AT Watkins, Lynne
01242 AT Watkins, Simon
02792 AT Waugh, Brian
00541 AT Weigh, C.M.G.
02795 AT Wensche, Leonard J.
00906 AT Westervelt, Bradley D.
02625 AT Wheeler, Elza
02669 SU Willey, Carol A.
02713 AT Williams, Edith
02747 AT Williams, Mar
02711 AT Zanderisson, Jan-Erik
02770 AT Zijl, Desiree van
00304 AT d'Antonio, David

The Flying Dutchman Strikes Again

The following persons have been taken hostage by the Flying Dutchman. Please, help us find them or they will be lost in all eternity, desperately roaming the Seven Seas. If you see him or her at conventions or meetings, or if you spot one (or more) of them in fanzines, or if you are acquainted with them, tell him or her to get in touch with us. ConFiction wishes all persons below a speedy return to his rightful place on board the Mouse That Roared.

2218 AT Bradley, Jill
2219 AT Bradley, Phil
2527 AT Dunlop, Kathryn
976 AT Farmer, Andrew D.
1150 AT Gravelle, Lisa
2259 AT Jardine, Lewis Diane
353 AT Macaran, Melora
2174 AT Monk, Tina
1921 SU Payne, Katherine
1325 AT Kencaly,

From its beautiful full color cover, to over 20,000 names, addresses and telephone numbers, the **FANDOM DIRECTORY** is one of the handiest source books available!



ISBN 0-933215-11-8

Cover by Steve Martin



FANDATA Computer Services
7761 Asterella Court
Springfield, VA 22152-3133
(703)644-7354

ELEVENTH ANNUAL EDITION

\$12.95 plus shipping

**COMPLETELY
UPDATED AND
REVISED**

Friends, organizations and new customers from ALL OVER THE WORLD are in the pages of the **FANDOM DIRECTORY**, with over 500 pages of information, including indexes to fan clubs, fanzines, and fan gatherings.

If you are a dealer, Publisher, Publicity agent, collector, or a fan looking for fellow enthusiasts, the **FANDOM DIRECTORY** is for you! Whether you are interested in nuts-and-bolts Science Fiction, comics, media, or pure fantasy, you cannot afford to be without this valuable tool.

COVERING: Science Fiction, Fantasy, Horror, Humor, Comics, Star Trek, Star Wars, Animation, Space Interests, Costumes, Filking, Props, Superheroes, Fantasy Games, Pulp, Sword & Sorcery, Dr. Who, Fan Art, Movie Material, Darkover, Old Time Radio, Collecting and many related fandoms!

PLUS: A listing of Research Libraries of Interest to Fandom — where all those manuscripts and rare published works have been donated, and a **RETAIL STORES INDEX** which lists over 3500 retail outlets which cater to fans and collectors.

FANDATA Publications 7761 Asterella Ct Springfield VA 22152-3133

_____ Fandom Directory 11 ('89)	\$12.95	_____
_____ Fandom Directory 10 ('88)	\$7.95	_____
_____ Fandom Directory 9 ('87)	\$5.95	_____
_____ Fandom Directory 8 ('06)	\$5.95	_____
_____ Writer's Yellow Pages (H)	\$19.95	_____
_____ Trek Memor. Price Guide	\$14.95	_____
_____ Overstreet Guide #18 (H)	\$17.95	_____
_____ Overstreet Guide #18 (P)	\$12.95	_____
_____ Overstreet Guide #17 (P)	\$5.95	_____
_____ Price Guide Companion #1	\$4.95	_____

Shipping (\$3.00 outside U.S.) **\$2.00**
TOTAL _____

NAME _____

Address _____

City _____ State _____ Zip _____



CHARGE TO MY: (Please Check One)

MASTERCARD VISA

ACCOUNT NUMBER _____
MASTERCARD INTERBANK NUMBER _____
CARD EXPIRES _____ MO _____ YR _____

Signature _____