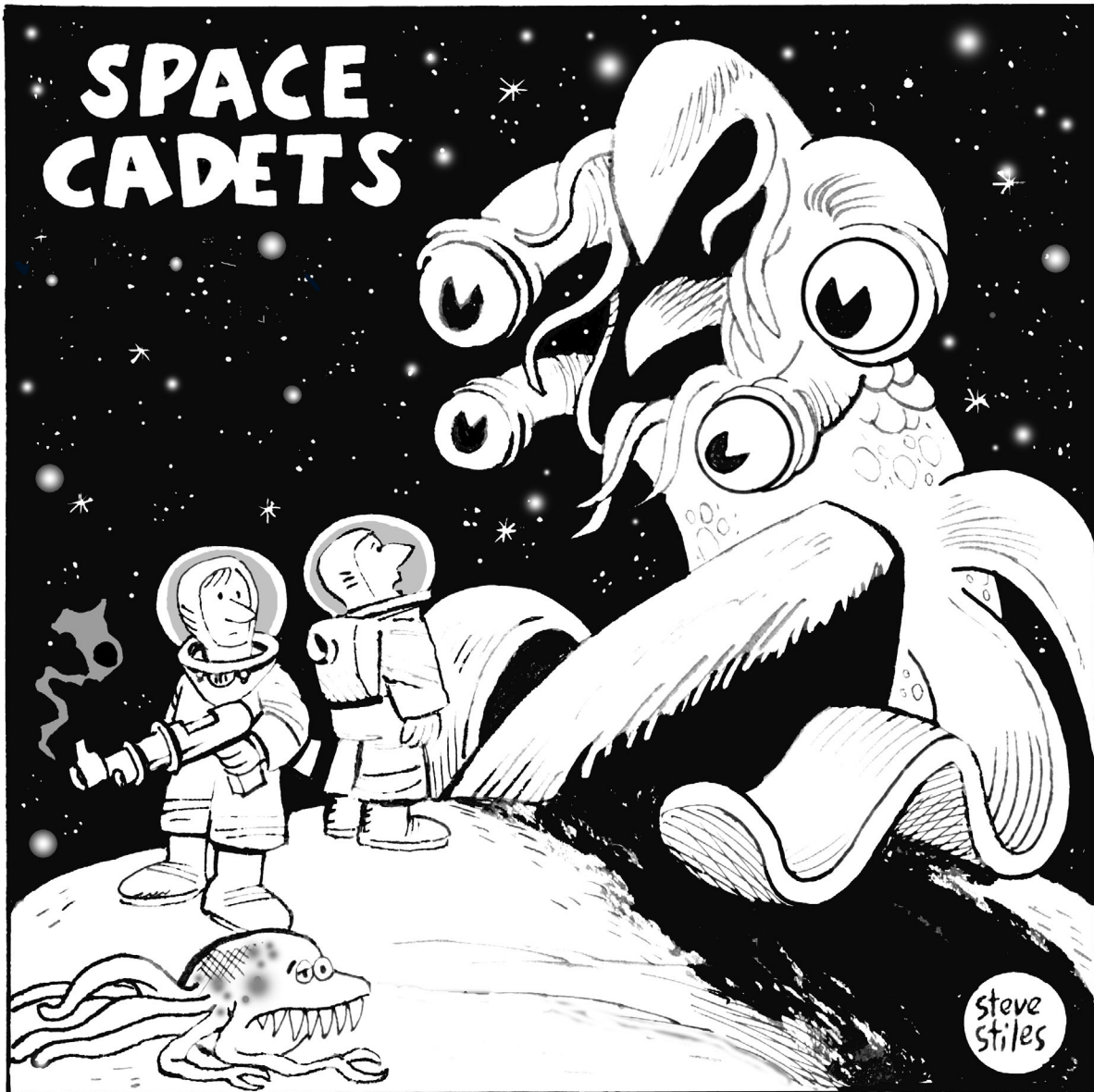


L.A.con IV

64th World Science Fiction Convention

Wednesday, August 23 to

Sunday, August 27, 2006



Typical: one crisis fixed, another raises its ugly head.

Progress Report #5

July 2006

the 65th World Science Fiction Convention & the 46th Japan Science Fiction Convention

Nippon 2007

the first Worldcon in Japan

Nippon2007 Aug30 - Sep3,2007

YOKOHAMA
at Pacifico Yokohama



Our Agents

North America:
Peggy Rae Sapienza

Nippon2007
Post Office Box 314
Annapolis Junction, MD 20701
peggyraes@comcast.net

U K:
Mike (Sparks) Rennie

68 Crichton Avenue
Burton Stone Lane
York, GREAT BRITAIN YO30 6EE
sparks@lspace.org

Europe:
Vincent Docherty

Koninginnegracht 75a
2514AH Den Haag
Netherlands
vj1709@hotmail.com

Australia and NZ:
Craig Macbride

PO Box 274
World Trade Centre, Vic, 8005
Australia
nippon07@f8d.com

AuthorGoH

Sakyo Komatsu
小松左京

David Brin
デビット・ブリン

ArtistGoH

Yoshitaka Amano
天野喜孝

Michael Whelan
マイケル・ウイラン

FanGoH

Takumi Shibano
柴野拓美



Illustrations by Eiji Yokoyama,



Nippon2007/JASFIC

4-20-5-604, Mure, Mitaka,
Tokyo 181-0002 JAPAN
info@nippon2007.org

COME ON!

"Worldcon" and "World Science Fiction Convention" are Service Marks of the World Science Fiction Society, an unincorporated literary society.
"Nippon2007" is a service mark of Japanese Association for Science Fiction International Communication(JASFIC), a registered non-profit organization in Japan.

RATES (until Jun 30, 2007)

Credit Card memberships will be charged in Japanese Yen. Cash and Checks may be paid in US\$, UK£ and EU€ to local agents.

| | Supporting | | | | Attending | | | |
|--------------------|------------|-----|-----|--------|-----------|------|------|---------|
| Adult(20~) | \$55 | £31 | €50 | ¥6,500 | \$220 | £125 | €186 | ¥26,000 |
| Voted | \$0 | £0 | €0 | ¥0 | \$110 | £63 | €90 | ¥13,000 |
| Young Adult(13~19) | \$39 | £22 | €32 | ¥4,500 | \$165 | £83 | €124 | ¥17,000 |
| Child(7~12) | -- | -- | -- | -- | \$80 | £44 | €65 | ¥9,000 |

E-Mail: info@nippon2007.org **http://www.Nippon2007.org/**

L.A.CON IV

64TH WORLD SCIENCE FICTION CONVENTION
 23 - 27 AUGUST 2006
 ANAHEIM, CALIFORNIA



L.A.con IV
 P.O.Box 8442
 Van Nuys, CA 91409-8442
www.laconiv.org
info@laconiv.org

Guests of Honor

Connie Willis
James Gurney
Howard DeVore
Frankie Thomas

Author
Artist
Fan
Special

L.A.con IV regrets to announce the deaths of Fan Guest of Honor Howard DeVore and Special Guest Frankie Thomas. For more details, please see www.laconiv.org. Both men will be fully honored at the convention

Facilities

Anaheim Convention Center
www.anaheim.net/conventioncenter

The Anaheim Hilton
www.anaheim.hilton.com
 1-800-HILTONS

SPECIAL RATES FOR L.A.con IV MEMBERS

| Rooms | Main Building | Lanai |
|---------------|---------------|----------|
| Single/Double | \$109.00 | \$119.00 |
| Triple | \$129.00 | \$139.00 |
| Quad | \$149.00 | \$159.00 |
| Rollaway | \$ 20.00 | \$ 20.00 |

The Anaheim Marriott
www.anaheim.marriott.com
 1-800-228-9290

SPECIAL RATES FOR L.A.con IV MEMBERS

| | |
|---------------------------|---------|
| Single/Double/Triple/Quad | \$99.00 |
| Rollaway | \$20.00 |

Table of Contents

| | |
|---|-----------|
| Guests of Honor | 3 |
| Contact Information | 3 |
| Facilities | 3 |
| Staff and Committee | 4 |
| Describing Connie Willis: Queens, Mittens, and Gladiators by Nancy Kress | 8 |
| Registration | 9 |
| Getting Here | 9 |
| Cadets Guide to the Academy | 13 |
| Celebrate Star Trek's 40th | 14 |
| Confirmed Guests | 17 |
| Childcare | 20 |
| Brewster Rokit Contest | 20 |
| WSFS Business Meeting | 22 |
| Transferring a Membership | 22 |
| Kaffeeklatsches | 22 |
| Handicapped Services | 22 |
| Filking | 23 |
| Blood Drive | 23 |
| Art Show | 24 |
| Calling All Darkover Fans | 24 |
| Book Exhibit | 24 |
| Tablesetting Contest | 24 |
| Masquerade | 25 |

Art Credit:
Steve Stiles: Cover

"Worldcon," "World Science Fiction Convention," and "Hugo Awards" are registered service marks of the World Science Fiction Society, an unincorporated literary society.

Staff and Committee

| | | | |
|----------------------------|------------------------------|--------------------------------|--------------------|
| Chairman's Division | Christian B. McGuire | Photography Tech | Danny Low |
| Convention Secretary | Sherri Benoun | | Harold Stein |
| Chairman's Staff | Deb Geisler | Ad Hoc Party Hospitality | Joyce Sperling |
| Chairman's Flying Monkeys | Joyce Sperling | | Michael Thorsen |
| | Michael 'Lynx' Molisani | 2005 Hugo Nominees Party | Liz Mortensen |
| | Elisa Sheets | Interaction Party | Sandra Childress |
| | Casey Bernay | | |
| | Michael McConnell | | |
| Advisers to Chairman | Ben Yalow | Administration Division | Elayne Pelz |
| | Drew Sanders | Membership | Elayne Pelz |
| | Mike Glycer | Registration | Jordan Brown |
| | | Staff | Gary Agin |
| Publications | | | Kris Bauer-Exline |
| Progress Reports | Milt Stevens | | Tony Benoun |
| PR Cover Artist | Steve Stiles | | Tammy Coxen |
| Souvenir Book | Joe Siclari | | Peter De Weerd |
| | Edie Stern | | Laura Korp |
| Staff | Geri Sullivan | | Matthew B. Tepper |
| | Mike Glycer | | Sandy Cohen |
| | Marah Searle-Kovacevic | Postmaster | Elayne Pelz |
| Restaurant Guide | Richard Nordrum | Treasury | Cheri Kaylor |
| Staff | Marcia Starke | Staff | James Daugherty |
| | Steve Condrey | | Mary Morman |
| GoH Publications | Craig Miller | | Stacy Hallman |
| Daily Newszine | Chaz Boston Baden | | T. R. Smith |
| Staff | Zara Baxter | Consular Advisor | |
| | Darcee Cashman | International Agents | |
| | Vanessa Van Wagner | Canada | Lloyd Penney |
| Apprentices | Paul Fischer | Canada | Yvonne Penney |
| | Martha Holloway | Europe | John Harold |
| Pan-Galactic Express | Pearl Newton | Europe | Robbie Bourget |
| Publicity | Joyce Hooper | Australia | Edwin Scribner |
| | Chaz Boston Baden | | Chaz Boston Baden |
| | Elayne Pelz | Webmaster | Scott Beckstead |
| | Ed Green | Staff | Elayne Pelz |
| Military Publicity | Gregg Reynante | | Michael Bernstein |
| Staff | Kevin Standlee | | Steven Chalker |
| WSFS Business Meeting | Donald Eastlake III | | Tony Cratz |
| Deputy Presiding Ofcr. | Pat McMurray | | Susan de Guardiola |
| Secretary | Deb Geisler | | Diane M. Kurlec |
| Timekeeper | Sparks | | Leane Verhulst |
| Sergeant-at-Arms | Jeff Orth | Website Advisory Team | Darrel K. Exline |
| Site Selection | Steve Francis | LiveJournal Community | Joan Steward |
| Staff | Jim Murray | | Katt Thornton |
| | Paula Murray | Staff Website | Scott Beckstead |
| | Richard Spelman | Merchandising | Scott Dennis |
| | John Lorentz | | Jane Dennis |
| Hugo Administration | | Office | Sheri Taylor |
| Sponsorship | Genny Dazzo | Staff | Janet Baernstein |
| and Commercial Exhibits | Ed Green | | Joyce Sperling |
| Fan Sponsorships | Milt Stevens | Ops | John Harold |
| Fanzine Lounge | Erwin 'Filthy Pierre' Straus | | Robbie Bourget |
| Filthy Fan Communications | Charles Mohapel | Staff | Mike Korp |
| Chief Photographer | Leonard J. Provenzano | | Jon Mann |
| Deputy Chief Photographer | Jack Krolak | | John Mansfield |
| Asst. Chief Photographers | Danny Low | | Michael McConnell |
| | Stan Burns | Logistics | Tadao Tomomatsu |
| Photographers | David W. Clark | Staff | Mike Galloway |
| | Ken Grimes | | George Mulligan |
| | Deborah A. King | Bob | Bob Null |
| | Ernest Lilley | Ribbons | Sharon Sbarsky |
| | Christine Mak | Ad Solicitation--Professional | Eve Ackerman |
| | Rodford E. Smith | Ad Solicitation--Fan | Judy Bemis |

| | | | |
|--|--|---|--|
| Communications | Bert Boden Gina Palmer | Lisa Hertel, Judy Kindell, Jenny Krause, Mary Jane Jewell, Danny Lieberman, Michelle Liguori, Theresa Mather, Sally Mayer, Pat McMurray, Chris Moriondo, Margaret Organ-Kean, Lynne Perkins, Sheila Perry, Dr. Karen Purcell, Julie Rigby, Anne Rudolph, Deb Ruh, Barry Short, Harold Stein | |
| Sign Shop | Bert Boden Katt Thorntin Evan James Wendy Newton Gina Palmer | Set-up/Tear Down Only | Michael Nelson |
| Sign Distribution Staff | Tadao Tomomatsu Coleen Burrows David Coltessa Susan Gleason Andrew Tisbert | Fun Fan Gallery Pro Gallery Costume Repair Station Space Port Lounge MiMo Mama Layout Safety Consultant Quartermaster | Mark Hertel Geri Sullivan Chaz Boston Baden Tom Veal Maria Rodriguez Sandra Childress Elaine Brennan Kurt Siegel Allison Hershey |
| Insurance and Licenses Staff | Elayne Pelz Gary Feldbaum | | |
| Exhibits Division Staff | Bobbi Armbruster Nancy Cobb Jan Price | | |
| Deputy Division Head | Glenn Glazer | Facilities Division | Kim Marks Brown |
| Aide d'Bobbi | Margene Bahm | Deputy Division Head | Ben Yalow |
| Fan History Exhibits | Joe Siclari Laurie Mann | Facilities Staff | Stephen Boucher Melissa Campbell |
| Fan/Bid Tables Staff | Ed Hooper Emily Christensen | Contracts | Craig Miller Bobbi Armbruster Glenn Glazer |
| Special Exhibits | Jerome Scott | Convention Center | Patty Wells Sue Mohn Aaron Curtis Bill Parker Tom Whitmore |
| Space Toy Exhibit | Justin Pinchot | | Mark Herrup Dave Gallaher |
| Connie Willis Exhibit | Kathi Overton John Pomeranz Joyce Scrivner Max Cervantes Ron Ontell Val Ontell | Hotel Function Space | Ben Yalow Kurt Siegel Grant Kruger Naomi Fisher T.R. Smith |
| Howard DeVore Exhibit | Mark Olson | Suites | |
| Star Trek Exhibit | Kim Gottlieb Walker | Safety Officer | |
| Book Exhibit | Tadao Tomomatsu Bert Boden Craigie Howlett Chris Marble Elizabeth Klein-Lebbink | Party Mavens | |
| Wall of History | Larry Smith | Housing | |
| L.A.con I Photo Exhibit | Joe Berlant Todd Dashoff Chris Logan Edwards | Member Services Division | Ed Green |
| History of Loscons | Chris Logan Edwards | Deputy Division Head | Sharon Sbarsky |
| Cadet Yearbook Photos | Joni Brill Dashoff Bonnie Atwood Shirley Avery | Administrative Support | Joe Zeff |
| Decorator Liaison | Bonnie Atwood | Con Suite | Liz Mortensen |
| Dock Manager Staff | Shirley Avery Bruce Miller Elizabeth Klein-Lebbink Deb Atwood Beth Zipser Mike Zipser | Staff | Joyce Hooper Suze Campagna Karl Lembke Beckie Barber Eylat Poliner Mark Poliner Bruce Rowan Joan Steward |
| Dealers Room Staff | Tina Klein-Lebbink Elizabeth Klein-Lebbink | Staff Lounge Staff | Arlene Satin Cathy Mullican Becky Thompson Ed Hooper Melanie Herz Sharon Pierce Gary Hoff |
| Art Show Staff | Gay Ellen Dennett Gay Ellen Dennett Andrea Senchy Pamelina Hovnatanian Jerome Scott Charles Matheny | Information Coordination Information On-Site Staff Information Technology Volunteers Staff | Susan Franzblau Heide Nichols Sally Woehrle Joe Zeff Scott Busman Bobbie DuFault Greg Bilan |
| Artist Check-In/Out | Ted Atwood Martin Deutsch Kevin Allen Bob Hranek | Tourism | |
| Mail-In Art | | Handicapped Services | |
| Print Shop | | Sales to Members Load Masters | |
| Sales | | Freebie Solicitation | |
| Auction | | Freebie Tables Coordination | |
| Art Show Reception | | | |
| Artist GoH Liaison | | | |
| ASFA Liaison | | | |
| Computer Support | | | |
| Construction and Layout | | | |
| Art Show Staff: Adina Adler, Judy Bemis, Ann Catelli, Laura Domitz, Mark Dulcey, Irene Harrison, | | | |

Staff and Committee Continued

| | | | |
|--|----------------------|------------------------------------|-------------------------|
| Program Division | Craig Miller | Program Software | Adam Tilghman |
| Deputy Division Head | Noel Wolfman | Tech Services | Mike Donahue |
| Program Development | Craig Miller | Staff | Chuck Shimada |
| Staff | Arthur Byron Cover | Plays Tech | Mark Gordon |
| | Kathryn Daugherty | Program Tech | John Maizels |
| | Genny Dazzo | Films | Charlie Hoff |
| | Lorien Gray | Anime | Kathi Overton |
| | John Hertz | Asian Cinema | John Pomeranz |
| | Becky Lilienfeld | Dances | Mike Donahue |
| | Shaun Lyon | Regency | Brett Achorn |
| | Arlene Satin | Rock | Brad Achorn |
| | Bill Warren | Adrenachrome South | Ric Myers |
| | Tom Whitmore | Pocket Program | Christian McGuire |
| | Noel Wolfman | Filking | John Hertz |
| | | Staff | Scott Beckstead |
| Space and Science | | Babel Conf. | Michael 'Lynx' Molisani |
| Program Advisors | Steve Bartlett | Ambassadorial Reception | Shaun Lyon |
| | Tina Beychok | Masquerade | Lee Gold |
| | Mike Willmoth | Staff | Rick Weiss |
| Academic Program | Brian Burns | | Barry Gold |
| | Kim Knight | Hugo Ceremony | John and Bjo Trimble |
| Children's Program/ Adventurer's Club | Amelia K. Sefton | Staff | Martin Jaquish |
| Director, Actors | Dana Ginsberg | Hugo Nominee Reception | Robin Donlan |
| | Tammy Olsen | House Manager, Arena | Vance Donlan |
| Crafts Mistress | Alison Stern | Gaming | Anastasia Hunter |
| Ramrod and Wrangler | Liza Neville-Olson | Space Academy LARP | Kathryn Daugherty |
| Advisor and Publications | Karen Wilson | Press | Laurie Mann |
| Young Adult Program | James Bacon | Staff | Gay Ellen Dennett |
| | Melissa Campbell | Autograph Sessions | Tom Veal |
| Costume Program | Zelda Gilbert | Staff | Ira Ham |
| Furry Program | Rod O'Riley | Opening Ceremonies | Aaron Vanek |
| GOH/VIP Liaison | Genny Dazzo | Closing Ceremonies | Elise Toth |
| Staff | Rick Katze | Tablesetting Contest | Beverly Widder |
| Fan Fund Liaison | Marty Cantor | Blood Drive | Chris Barkley |
| | | Staff | Regina Reynante |
| Green Room | Sandy Cohen | | Jim Dennis |
| Staff | Kelly Green | SFWA Liaison | Pat Nelson |
| | Peggy Little | Writers Workshops | Ariel Reynante |
| | Heide Nichols | Kaffe Klatsches/ Lit Beers/Etc. | Gregg Reynante |
| | Drew Sanders | Staff | Corliss Robe |
| Program Ops | Jim Mann | Spaceport Lounge | Gary Robe |
| Staff | Ian Stockdale | Stage Manager | Sue Mohn |
| | Eve Ackerman | Plays and Performances | Sue Mohn |
| | Mary Ann Anthony | Docent Tours | Fuzzy Niven |
| | James Briggs | Art Show | Dennis Cherry |
| | Stewart Capewell | | Kristine Cherry |
| | Ann Cecil | | Dora Carder |
| | Linda Deneroff | | Kathy Carder |
| | David Evans | | Jennifer Cole |
| | Terry Fong | | Pamela DuPuy |
| | Lynn E Cohen Koehler | | Sheila Finch |
| | Ruth Leibig | | Adrienne Foster |
| | Eric V. Olson | | Alex von Thorn |
| | | | Lisa Garrison-Ragsdale |
| | | | Marah Searle-Kovacevic |
| | | | Nick Smith |
| | | | Cathy Beckstead |
| | | | John Hertz |

SCIENCE vs. CHAOS

Peak Oil and the blatant disregard for the after effects of Katrina are symptoms of an uncontrollable economic system that is ruled solely by the profit motive. Physical, social and environmental safeguards are an impediment and are sacrificed in the quest for profit. Because of this unrelenting dictum, our planet and its inhabitants are in peril.

Using science exclusively to satisfy the requirement for exponential economic growth in a finite world is tantamount to social and environmental suicide.

North America's only option is scientific functional government.

INVESTIGATE TECHNOCRACY INC.



No Wars – No Poverty – Clean Environment

www.technocracyinc.org – www.technocracyvan.ca – www.technocracy.ca

CHQ111@aol.com
360-366-1012

DESCRIBING CONNIE WILLIS: QUEENS, MITTENS, AND GLADIATORS

by Nancy Kress

Connie Willis is funny. As a writer, panel member, toastmaster, and dinner companion, she can be hilariously, side-splittingly funny. Everyone agrees on that, just as they agree on her unsurpassed number of awards (six Nebulas and eight Hugos). Many of the awards are for such witty stories as “Even the Queen,” perhaps SF’s only humorous story about menstruation. Connie has managed to find humor not only in tampons but also in quantum physics (“At the Rialto”), paleontology (“In the Late Cretaceous”) and censorship (“Ado.”) What many people don’t realize is how many other things Connie Willis is besides funny.

First, she is an accomplished time traveler. In much of her work, from the early short story “Fire Watch” (1982) to her forthcoming novel *All Clear*, she sends contemporary characters back into the past. They go to the fourteenth century, the Civil War, and – often – to World War II England. But to say that “her characters go into the past” is to say too little. Connie seems to go there, too. A part of her lives, for months or years, in another temporal reality.

I once called her to ask how *Doomsday Book* was coming along. “It’s not,” she sighed.

“It’s not?”

“No. It’s the mittens.”

“Mittens?” I said, starting to feel like an echo.

“Yes – mittens. I can’t write this scene until I know what kind of mittens they wore in 1348.”

“Can’t you just write ‘mittens’ and let it go at that?”

“No!” she said, shocked. “I have to see them, and I can’t find any good pictures or descriptions of those damn mittens anywhere!”

Eventually, she did. She saw the mittens, heard the sound of incoming bombs on the roof of St. Paul’s Cathedral, felt the texture of a Confederate uniform, smelt the buboes of the Black Death. And because she did, so do we when we read her stories.

There is a deeply serious side to Connie. Her work can be funny, yes, but it can also be remarkably attuned to the world’s pain. Eminent critic John Clute called the climax of *Doomsday Book* one of “intensely moving

gravity...rarely found in SF.” Connie mourns the human inevitabilities – plague, death, heartache – whether they occur in the past, the present, or the imagined future. She is after the whole of life, not merely its entertaining surface, and this gives her work far more depth than the merely funny could attain. I know of no story more elegiac than one of her early successes, “Daisy, in the Sun.”

Finally, Connie is a generous teacher. Having had the privilege of co-teaching a writing class with her, I can attest to the insight, care, and concern she brings to the manuscripts of aspiring writers. This is true even when the story is gaspingly dreadful, as with the young man that wrote about the gladiator who...No. Connie wouldn’t mock that misguided author, and so neither will I.

Comedienne, time traveler, mourner, teacher, friend. Find Connie Willis at L.A.con IV. Ask her about her early days writing confession stories. Ask her why a real-life paleontologist objected to “In the Late Cretaceous.” Ask her when we can expect *All Clear*. But even if you don’t get a chance to speak to her personally at Worldcon, do read her. You’ll be in for a genuine and unique pleasure.



Getting Here Is... Really Not Half The Fun

By Air

Anaheim, our site for the 2006 Worldon, is served by four or five airports. Los Angeles International Airport (LAX), by far the largest, and Ontario Airport (ONT) are the farthest away at about 35 miles. Much closer are Long Beach (LGB) and John Wayne/Orange County (SNA) at approximately 18 and 11 miles, respectively. Between these four, you can get here from pretty much anywhere. In addition, Burbank-Glendale-Pasadena (BUR) has the unique distinction of being the only airport in L.A. or Orange County with a train station next to it, which may be of interest to some members.

By Train

The American passenger railroad, Amtrak (no 'c' in Amtrak) offers short and long-distance service. It is important to note that taking the train will not necessarily be cheaper than flying or faster than driving/taking the bus, but it may be less stressful, and probably more scenic. You will need to educate yourself on how Amtrak works, and/or get yourself a travel agent that is experienced in booking train tickets.

Anaheim-area Train Stations

If you call Amtrak, (800-USA-RAIL, or 800-762-7245) and ask how to get to Disneyland, they will tell you to take the train to Fullerton. The Anaheim Stadium (Edison Field) station is actually closer to Disneyland, but getting off at Fullerton may save you a dollar on the railfare. Both stations are served by Amtrak (also known as the National Rail Passenger Corporation) and Metrolink (aka the Southern California Regional Rail Authority).

The Amtrak and Metrolink, Anaheim Stadium (Edison Field) Station is at 2150 E. Katella Ave., Anaheim CA, at St. College, 714-385-1448. The Orange County Transportation Authority (OCTA) bus route 50 runs down Katella Avenue outside the stadium parking lot, and will take you straight to the hotel for \$1. MapQuest says it's 2.1 miles from the Anaheim station to the Hilton.

The Amtrak/Metrolink Fullerton Station is at 120 E. Santa Fe Ave., Fullerton CA, one block south of Harbor & Commonwealth. Again, one \$1 OCTA bus (Route 43) will take you down Harbor Blvd. to the hotel (but it will be a longer bus ride). MapQuest says it's about 5.1 miles from the Fullerton station to the Hilton.

By Cross Country Bus

Greyhound Bus Lines, 100 W. Winston Rd. (at Anaheim Blvd.), Anaheim. CA 92805. (714) 999-1256 Check their website for special discounts. The Anaheim bus depot is on other side of the freeway from our site. You might be able to get the hotel to send a van to pick you up, or take a local bus. MapQuest says it's about 1.8 miles from the bus station to the Hilton.

Registration

Registration will be located in the Anaheim Convention Center, outside Hall A.

Planned registration hours are:

- Monday, Aug. 21 3:00 pm – 6:00 pm**
- Tuesday, Aug. 22 9:00 am – 6:00 pm**
- Wednesday, Aug. 23 9:00 am – 8:00 pm**
- Thursday, Aug. 24 9:00 am – 8:00 pm**
- Friday, Aug. 25 9:00 am – 8:00 pm**
- Saturday, Aug. 26 9:00 am – 8:00 pm**
- Sunday, Aug. 27 9:00 am – 2:00 pm**

Please bring some picture form of ID with you.

Getting Here Is...Continued

By Car

From points south, take the I-5 North, exit Katella Avenue and turn left. Turn left on Harbor Blvd, then right on Convention Way. The Hilton is on the right, the Marriott is on the left.

From LAX and points north, take the I-405 south to the 22 East. Exit Harbor Blvd. North. Travel 4 miles to Convention Way and turn left. The Hilton is on the right, the Marriott is on the left.

From central/northern California. take I-5 south. Exit Harbor Blvd. South. Travel about 2 miles to Convention Way and turn right. The Hilton is on the right, the Marriott is on the left.

By Taxi

Numerous taxicab services serve the airports. Many of them will quote a flat rate from the airport to the Anaheim hotels. (Note that it's usually more expensive to be picked up at the airport than to be dropped off there, because of fees imposed on the taxicab companies by the airports.)

Anaheim Yellow Cab Company (714) 535-2211, (800) 535-2211. Ask for "Airport V.I.P. Reservation Discount" for your return to the airport, reserve at least 30 minutes before cab is to pick you up. ("V.I.P. Discount" rates from Anaheim hotels to airports, per cab load: SNA \$25, LAX \$64, Long Beach \$25, Burbank \$72, ONT \$64.) [Info as of Sep. 2003]

South Coast Cab Company (714) 750-8294, (949) 497-2308, (800) -582-9422 (5TAXICAB).

By Shuttle

Our site in Anaheim is located approximately 20 minutes from John Wayne/Orange County Airport, 45 minutes from Los Angeles International Airport, and 45 minutes from Ontario Airport. Super Shuttle, Airport Coach, and other shuttle bus services offer service from these facilities to the Hilton and Anaheim Marriott.

You should make a reservation in advance, and then call them again after you pick up your bags. Call or check their website to determine rates for the airport you're using.

(Note that for three people traveling together, a taxi may be cheaper.)

Advantage Ground Transportation (714) -557-2465, (800) 752-5211. Serving Orange, Los Angeles, Riverside/San Bernardino Counties.

Alternative Transportation (714) 630-3367, fax:(714) -630-2535. Based in Anaheim, serves Orange County.

Best Limosines and Transportation (714) 375-9128, (800) 827-7411, fax: (714) 848-2539. Sedans, limosines, vans, mini coaches, motor coaches.

Disneyland Resort Express (714) 978-8855. Scheduled service between the Anaheim hotels and Orange County Airport, every half hour during the summer. Fares from Orange County Airport \$14 one-way, \$24 roundtrip, children (3-11) \$12/\$16 rt. Scheduled service to LAX, almost all day, \$19 one-way, \$28 round-trip for adults and children 12 and over; children (3-11) \$16/\$20 rt. Call or check website for hours of operation. Pick-up is on same level as baggage claim, no reservation required. Groups of 10 or more can get a discount. Tickets can be bought with case or Visa/Mastercard. (Grey Line, Airport Bus, Coach USA have merged; they operate this shuttle.) [Info as of Mar. 2006]

Karmel Shuttle (888) 995-7433. Headquarters in Buena Park, serves Orange, L.A., San Bernardino and San Diego Counties, also Northern California.

Prime Time Shuttle (800) 733-8267 (RED-VANS), (310) 342-7200

Super Shuttle SNA: (714) 517-6600, (949) -766-6601. LAX: (310) 782-6600, (213) 775-6600, (562) 498-6670. BUR: (818) -556-6600. ONT: (909)-467-9600, (626) 443-6600.

Xpress Shuttle SNA/Anaheim: (888) 800-6543. LAX: (800) 427-7483 (800-I-ARRIVE). ONT: (800) 644-7433.

(For further information on travel as well as other stuff, refer to www.laconiv.org.)

Worldcon? In Hollister?

There's a lot more to Hollister than trendy clothing, motorcycle gangs terrorizing the citizenry and... something...

Hollister is home to **Casa de Fruta**, an enduring California landmark fruit stand and event center, celebrating its 100th anniversary in 2008. What better place could host the 2008 Worldcon?

Nestled in the beautiful Pacheco Pass, only 30 minutes from San Jose Mineta International Airport, and on a major route between the SF Bay Area and Los Angeles, Casa de Fruta's 14-room *Casa de Motel* and 300 space *Casa de RV Park* will provide a convenient and unique Worldcon experience. You won't be lining up for an elevator at our facilities.

Conference facilities are just as unique. Casa de Fruta's Country Park, Music Hall, Carousel (for round-robin discussions) and Train (Casa de Choo-Choo) offer opportunities unequaled.

Vote Hollister in 2008. Vote *Casa de Worldcon!* Join, and be fruitful!

Bid Chair: Andy Trembley • **Mayor of Casa de Worldcon City:** Chris Garcia
Kevin Roche • Barbara Johnson-Haddad • Kevin Standlee • Dave Gallaher
Spring Schoenhuth • Fred C. Moulton • Lisa Deutsch Harrigan • Cheryl Morgan
Casey Swan (Dailey Swan Publishing) • Adrienne Foster • Jay Lake

Website: <<http://hollister2008.livejournal.com/>>

E-mail: hollister2008@bovil.com

"Hollister in 2008" is a committee of the *Bay Area Science Fiction Association*
"We do these things not because they are easy, but because they are weird!"

VOTE EARLY

VOTE OFTEN

VOTE CHICAGO IN 2008!!



My kind of town, Chicago is...

Chicago, Chicago, that toddlin' town...

I'm making my way back to Chicago...

It's 106 miles to Chicago, we've got a full tank of gas, half a pack of cigarettes, it's dark and we're wearing sunglasses.

If it gets around in Chicago that I went to a prayer meeting, no decent person will talk to me!

You ain't seen Chicago, you ain't seen nothin'.

Welcome to Chicago.

CHICAGO: FAMED IN SONG AND STORY

Fees

| | |
|-------------|------|
| | US\$ |
| Pre-support | \$20 |
| Corn Dog | \$50 |
| Top Dog | \$75 |

Make Checks Payable to
Chicago Worldcon Bid
P.O. Box 13
Skokie, IL 60076

www.chicagoworldcon7.org



"Worldcon," "WSFS," "World Science Fiction Convention," and "World Science Fiction Society" are service marks of the World Science Fiction Society, an unincorporated literary society.

Committee: **Chair:** Dave McCarty, **Treasurer:** Tom Veal, **Secretary:** Helen Montgomery, **Membership:** Dina Krause / Leane Verhulst, **Publications:** Steven H Silver, **Corresponding Secretary:** Shelly Rhoades. **Corporate President:** Jill Eastlake. Charissa Bihl, Elizabeth Bishop, Madrene Bradford, Shannon Clark, Tammy Coxen, Todd Dashoff, Donald Eastlake, kT FitzSimmons, Glenn Glazer, Alexia Hebel, Mark Herrup, Angela Karash, Sherry Katz-Karp, George Krause, Sydnie Krause, Ben Liberman, Barry Lyn-Waitsman, Marcy Lyn-Waitsman, Kathleen Meyer, Ron Oakes, Laura Paskman-Syms, Phoenix, Kurt Sakeada, Marah Searle-Kovacevic, Joseph "Uncle Vlad" Stockman, John Syms, Barb Van Tilburg, Ray Van Tilburg, Alex von Thorn, Brent Warren.



Cadets' Guide to the Academy

Special Summer Session 2006 Edition
Planet Earth: Anaheim, CA, USA

Attention, Space Cadets!

We're delighted you will be attending the Space Academy's special session being offered this summer in Anaheim, CA. Your thorough review of this Cadets' Guide will help you settle in and know your way around from the moment you arrive on the Academy grounds in August.

The Academy is located in the Anaheim Convention Center. All cadets must pass through **ADMISSIONS (Registration)** in the Convention Center lobby upon arrival.

After admission to the Space Academy is complete, cadets are encouraged to head to **CADET CENTRAL (Hall A)**, where they will find the:

- **ARTS CENTRE (Art Show)**

In the Arts Centre, cadets can view, bid on, and buy artwork from across the galaxy — original paintings and sculptures, jewelry, prints, and more. Talk with artists one-on-one in Artists Alley. Resale area available for cadets looking to fund advanced Academy studies or to make room in their homes and budgets for new art.

- **ACADEMY BOOK STORE (Dealers Room).**

The Book Store carries volumes discussed in Academy classes, gifts to send to family and friends on your home planet, apparel that can be worn during your stay at the Academy as well as after you leave, and other souvenirs of your time there.

- **QUAD (Exhibits)** The Quad is filled with interesting, informative, instructional, and terribly worthwhile exhibits. Study displays honoring present and past Academy dignitaries. Refresh your memory about Academy events throughout time and space. Bask in the reflected glory of the awards secured by Academy sports teams. Celebrate the wondrous accomplishments of the Space Academy!

Most Classrooms (Main programming rooms) are on the second floor of the Academy. Individualized class schedules are the responsibility of every cadet. The Academy offers its cadets nearly 1,000 sessions to choose from. There will be plenty to delight, amaze, and challenge cadets as they build their core competencies and study specialized fields. With graduation only a few days away, most cadets will find themselves spending long hours in the Classrooms, soaking up the considerable wisdom and insight presented by hundreds of renowned Faculty members.

Before each session, presenters and panelists are welcome to stop by the Faculty Lounge (Green Room) as needed to pick up class materials and discuss specifics of the session.

Cadets can relax between and after classes at the Spaceport Lounge and Under Belly Bar (Arena Lobby), located between Cadet Central (Hall A) and The Rocket Field (Arena) on the first floor of the Academy.

The Rocket Field (Arena) is the site for major Academy events such as the Masquerade on Friday night, and the Hugo Awards Ceremony on Saturday night.

Cadets have two housing options adjacent to the Academy: H Dorm (Hilton) and M Dorm (Marriott). Staying on campus puts cadets a moment's walk from the Academy halls. (We're checking city and county ordinances regarding the use of personal jet-packs; at the time this Guide was prepared, it appears that only grounded, wheeled assistance devices are allowed on the Academy grounds.)

Both dorms offer private sleeping areas. In addition, H Dorm will be home to some Classrooms as well as several focused interest areas, such as filk music and gaming.

Staying in the dorms also maximizes cadets' enjoyment of hospitality events hosted each night by their fellow cadets on H Dorm's lanai deck. Each dorm room includes a private bathroom, daily housekeeping service, and many other amenities to enhance the comfort of your stay.

Cadets staying off campus and commuting to the Academy are of course also welcome to enjoy the classes, hospitality events, and other focused interest areas in H Dorm. We look forward to your arrival on the Academy grounds in August!

Celebrate Star Trek's 40th

Forty years ago, on September 8th, 1966, Star Trek debuted on television screens across America, forever changing the landscape of television and science fiction. But days earlier, the show's creator, Gene Roddenberry, flew to Cleveland, Ohio and the 24th World Science Fiction Convention to preview his new series for the science fiction fans gathered there.

He came, along with Sam Peeples, a writer for the series, and screened two episodes: the original pilot, "The Cage," and "What Little Girls Are Made Of." They spoke, extolling the wonders of their series. They also brought three women's costumes and models to wear them.

With that association, how could L.A.con IV, the 64th World Science Fiction Convention, not commemorate and celebrate the 40th anniversary of Star Trek? A small but significant portion of this year's program and exhibits will be dedicated to Star Trek, the people who crafted it, and the fans who love it.

The entire program is still in the works and the convention is still contacting people involved with Star Trek in all of its incarnations, but already scheduled are:

- Appearances by stars from the original Star Trek series Walter Koenig and BarBara Luna as well as Star Trek: The Next Generation's Marina Sirtis, Star Trek: Voyager's Robert Picardo and Richard Herd, Star Trek: Deep Space Nine's Andy Robinson, and Suzie Plakson, who appeared on Next Generation, Voyager, and Enterprise, and J.G. Herzler from Star Trek: Deep Space Nine, Voyager and Enterprise. More stars expected but not yet confirmed.
- Writers from the original series including DC Fontana, David Gerrold, and Robert Sabaroff, talking about crafting a legend.
- A display of costumes actually used on the series.
- Writers and producers from Star Trek: The Next Generation, Star Trek: Deep Space Nine, Star Trek: Voyager, and Enterprise.
- Star Trek's Future Plans — Come hear about all the new Star Trek projects, from video games to travelling exhibits to the first ever Star Trek "communicator" cell phone from the people involved with making them happen, Paula Block, John Van Citters, and others. All questions welcome.

Graphics, miniatures, and props.

- A slide presentation on Star Trek: Phase 2, the first planned revival of Star Trek, from 1977, which was dropped at the very last minute in order to bring Star Trek to the motion picture screen instead.
- A slide show by John & Bjo Trimble on the history of Star Trek Fandom.
- Panels with fans of Star Trek, talking about the first fan-run conventions, keeping Star Trek alive between its cancellation in 1968 and the debut of Star Trek: The Motion Picture.
- A show by Star Trek designer Mike Okuda, showing behind-the-scenes graphics from various versions of Star Trek.
- Rick Sternbach — long time production illustrator/designer for Star Trek: The Next Generation, Voyager, and Deep Space Nine — will present a slide show of some of his art for the various series.
- A presentation by Star Trek: The Next Generation, Voyager, and Enterprise Special Effects Supervisor Ronald B. Moore.
- "Star Trek: Behind The Camera From Behind A Camera": A slide show of crew-taken photos of behind-the-scenes moments on Star Trek Enterprise.
- A lesson in speaking Klingon from the director of the Klingon Language Institute.
- The creators behind Star Trek: New Voyages and Hidden Frontier, the two internet series continuing the adventures of the Starship Enterprise and the Federation.
- A screening of Free Enterprise, followed by a talk by Mark A. Altman and Robert Meyer Burnett, the film's writers, producer, and director.

A screening of Galaxy Quest, followed by a talk by Robert Gordon, the film's writer.

The convention's traditional first-night welcome reception, this year themed to the Babel Conference Ambassadorial Reception, hosted by John and Bjo Trimble with David Gerrold as Master of Ceremonies

And much, much more. Keep checking our website for more details and future announcements.

COLUMBUS

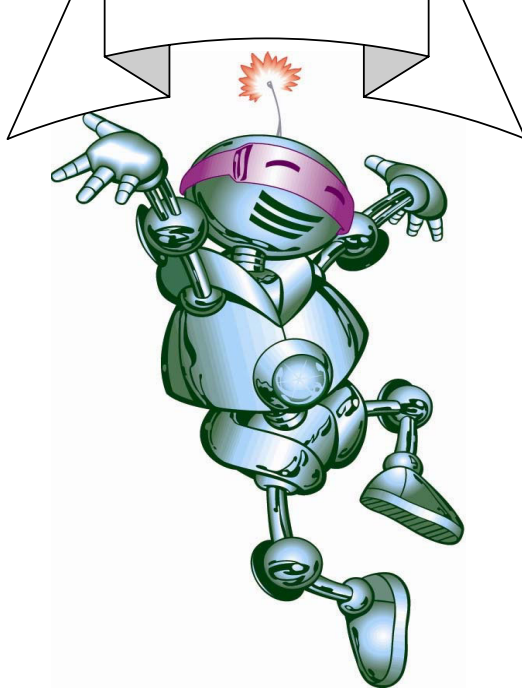
A Bid to host the 66th World Science Fiction Convention

Labor Day Weekend

August 28 – September 1, 2008

See What Columbus Has To Offer!

**It's Time For
Someplace
NEW!**



Premier Convention Facilities

- 3 Hotels and Convention Programming all interconnected – you don't have to be outside unless you want to
- Reasonable room rates (\$99 to \$105)
- Inexpensive parking options
- "Fan Friendly" hotel & convention staff

Our proposed site includes

- The Hyatt Regency
- The Drury Inn
- The Crowne Plaza
- The *Newly Expanded* Convention Center
- A Fabulous 24-hour Food Court!

Experienced Convention Staff

Central Ohio is home to

- MARCON
- OVFF (Ohio Valley Filk Fest)
- Context

**For more information visit our website at
www.bidcolumbus.org**

Worldcon is a service mark of the World Science Fiction Society, an unincorporated literary society.

The time has come! The time is now!

To Vote for Denver!

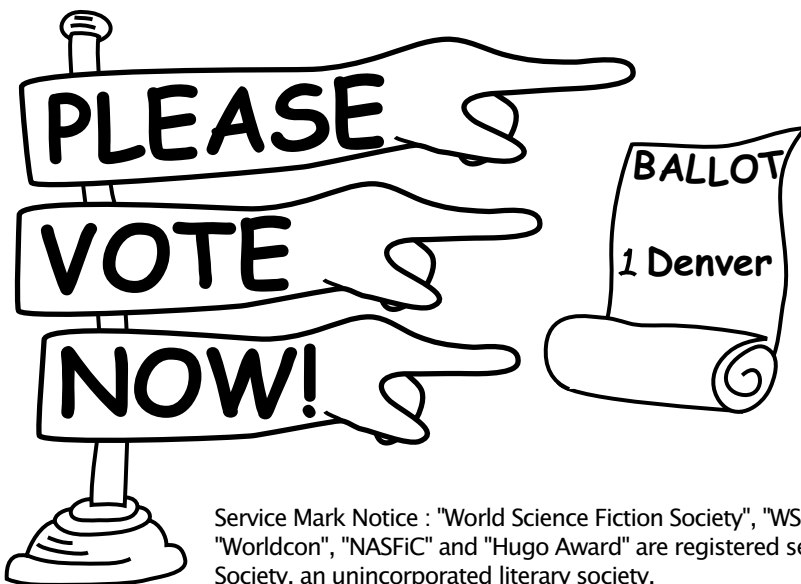
How? How? How?

You can vote by mail, you can stand in line,
 But vote for Denver, our bid is fine!
 Our Bidcom's experienced with Worldcons many,
 And Denver is fun, with diversions plenty!

Hotels we've got, both close and far,
 Great public transit, no need for cars.
 The convention center has lots of space,
 With restaurants nearby, to feed your face!

Downtown is filled with lots to do,
 Six Flags, Coors Field, and brew pubs too!
 Tattered Cover has thousands of books in print,
 There're also museums, and the Denver Mint!

So the time has come, the time is now,
 Denver Supporters will you



Service Mark Notice : "World Science Fiction Society", "WSFS", "World Science Fiction Convention", "Worldcon", "NASFiC" and "Hugo Award" are registered service marks of the World Science Fiction Society, an unincorporated literary society.

Who can vote?

Members of Interaction (the 63rd Worldcon, held in Glasgow in 2005), or LACon IV (the 64th Worldcon, being held in Los Angeles in 2006) can vote at <http://www.laconiv.org>

Worldcon Denver 2008 will participate in Passalong Funds.

Pre-Support \$20
Pre-Opnose \$40
Friends \$100

Please send pre-supports, along with your name, address, email, phone number and suggestions to: Denver 2008 Bid, 1245 Allegheny Drive, Colorado Springs, CO 80919.

For offers of assistance, questions, or suggestions please email: info@denver2008.com Or see our website at: <http://www.denver2008.com>.

Confirmed Guests as of June 1, 2006

| | | |
|-----------------------|----------------------------|--------------------------------|
| Forrest J Ackerman | John DeChancie | J.G. Hertzler |
| Andrew Adams | Mike DeMeritt | Bill Higgins |
| Mark Altman | Linda Deneroff | P. C. Hodgell |
| Lou Anders | Juls Denton | Eric L. Hoffman |
| Janet Wilson Anderson | Buzz Dixon | James P. Hogan |
| Karen Anderson | Cory Doctorow | Nancy Holder |
| Kevin J. Anderson | John R. Douglas | Robert B Hole, Jr. |
| Margaret Austin | Gardner Dozois | John-Henri Holmberg |
| Fiona Avery | Kevin Drum | Gillian Horvath |
| James Bacon | Margaret Ann Durocher | Alma Aleksandra Hromic Deckert |
| Chaz Boston Baden | Martin Easterbrook | Elizabeth Anne Hull |
| Lenny Bailes | Scott Edelman | Sara Hyman |
| Robin Wayne Bailey | Bob Eggleton | Aleta Jackson |
| Chris M. Barkley | Alex Eisenstein | Charles Lee Jackson II |
| Wayne Barlowe | Phyllis Eisenstein | Steve Jackson |
| John Barnes | Harlan Ellison | MaryAnn Johanson |
| Steven Emory Barnes | Edward Richard Endres | Bob Kanefsky |
| Jean-Noel Bassior | Michael Engleberg | Jordin T. Kare |
| Peter S Beagle | Jane Espenson | Mary Kay Kare |
| Greg Bear | Lawrence Evans | Keith G. Kato |
| Jerry Beck | William B. Fawcett | Jerry Kaufman |
| Hilari Bell | Cynthia Felice | James Patrick Kelly |
| Gregory Benford | Sheila Finch | Kay Kenyon |
| Joe Bergeron | James W. Fiscus | John Kessel |
| Jeff Berkwits | Dr. John L. Flynn | Thomas Kidd |
| Dr. Bob Blackwood | Michael F. Flynn | James P. Killus |
| Fr. John Blaker | Phil Foglio | Rosemary Kimble |
| Margaret W Bonanno | D.C. Fontana | Sarah Elizabeth Kindred |
| Steven R. Boyett | Richard Foss | Ellen Klages |
| David Bratman | Alan Dean Foster | Louise M Kleba |
| Jon L. Breen | Jane Frank | Elizabeth Klein-Lebbink |
| David Brin | Laura Frankos | Walter Koenig |
| Charles N. Brown | James Frenkel | Victor Koman |
| Rachel Manija Brown | David Fury | Nancy Kress |
| Ginjer Buchanan | Tom Galloway | George Krstic |
| Rob Burnett | Christopher J. Garcia | Grant P Kruger |
| Bob Burns | David Gerrold | Ellen Kushner |
| Michael A. Burstein | Nat Gertler | Jay Lake |
| Pat Cadigan | Zelda Gilbert | Geoffrey A. Landis |
| David Cake | Mel Gilden | Bridget Landry |
| Scott Campbell | ElizaBeth "Lace" Gilligan | Devra Langsam |
| Susan Casper | Laura Anne Gilman | Joseph Lazzaro |
| Michael Cassutt | Diana Glycer | Evelyn C. Leeper |
| Rob Caves | Mike Glycer | Mark R. Leeper |
| Robert J. Cesarone | Lynn Gold | Fred Lerner |
| Dave Clements | Robert Gordon | David D. Levine |
| Jack Cohen | Robert Gounley Lorien Gray | Jacqueline Lichtenberg |
| Steve Collins | Ashley Darlington Grayson | Guy H. Lillian III |
| Melissa Conway, PhD | Scott E. Green | Brad Linaweaver |
| Glen Cook | Simon R. Green | Steven Lopata |
| Brenda Jean Cooper | Hugh S. Gregory | Jean Lorrach, Ph.D. |
| Paul Cornell | Gay Haldeman | BarBara Luna |
| Ctein | Joe W. Haldeman | Perrienne Lurie |
| Tad Daley | Barbara Hambly | Nicki Lynch |
| Jack Dann | Harry Harrison | Rich Lynch |
| Ellen Datlow | David Hartwell | Shaun Lyon |
| Sheryl Jean Davis | James Hay | Dana MacDermott |
| Genevieve Dazzo | John G. Hemry | John P Maizels |
| Keith R.A. DeCandido | Richard Herd | John Mansfield |

Confirmed Guests Continued

Lydia C. Marano
 Darlene Marshall
 George R.R. Martin
 Lee Martindale
 Theresa Mather
 Anne McCaffrey
 Todd McCaffrey
 Shawna McCarthy
 Bear McCreary
 Thomas R. McDonough
 Christian B. McGuire
 Bridget McKenna
 Loretta McKibben
 David F. McMahon, MD
 Sean McMullen
 Beth Meacham
 Peter W. Merlin
 Ric Meyers
 Craig Miller
 Jess Miller
 Betsy Mitchell
 Rebecca Moesta
 G. Patrick Molloy
 Ronald B. Moore
 Ronald D. Moore
 Tony Moore
 Cheryl Morgan
 Vera Nazarian
 Larry Nemecek
 Craig Newmark
 Bill Nicholls
 Patrick Nielsen Hayden
 Teresa Nielsen Hayden
 Larry Niven
 Garth Nix
 Gerald David Nordley
 Lee Nordling
 Lisanne Norman
 Naomi Novik
 Marti Noxon
 Jody Lynn Nye
 Rockne S. O'Bannon
 John O'Halloran
 Denise L. Okuda
 Michael H. Okuda
 Mark Olson
 Priscilla Olson
 Greg Pak
 Spike Parsons
 Fred Patten
 Fiona Patton
 Lawrence Person
 Pierre E. Pettinger
 Sandra G. Pettinger
 John Picacio
 Robert Picardo
 Justin Pinchot

Richard Pini
 Wendy Pini
 Phil Plait
 Suzie Plakson
 Frederik Pohl
 John Pomeranz
 Andrew I. Porter
 Jerry Pournelle
 Tim Powers
 Christopher Priest
 Eric S. Raymond
 Michael Reaves
 Gar Reeves-Stevens
 Judith Reeves-Stevens
 Hank Reinhardt
 Mike Resnick
 Chris Roberson
 Jennifer Roberson
 John Maddox Roberts
 Madeleine E. Robins
 Andy Robinson
 Kim Stanley Robinson
 Kevin Patrick Roche
 Alan Rodgers
 Scott Rogers
 Deborah J Ross
 Josef Rubenstein
 Kevin Rubio
 Kristine Kathryn Rusch
 Bob Sabaroff
 Fred Saberhagen
 Steve Saffel
 Don Sakers
 Brandon Sanderson
 Steve Sansweet
 Anne M.C. Saunders
 Robert J. Sawyer
 John Scalzi
 Tom Schaad
 Samuel Scheiner
 Stanley Schmidt
 Dr. Lawrence M. Schoen
 Darrell Schweitzer
 Eric Shanover
 Robert Shearman
 Delia Sherman
 Josepha Sherman
 John Shirley
 Barry Short
 Bob Short
 William Shunn
 Lance Sibley
 Joe Siclari
 Karen Haber Silverberg
 Robert Silverberg
 Helen Simmins-McMillin
 Roger Sims
 Bradley H. Sinor
 Marina Sirtis
 John Skipp
 Dennis Skotak
 Dave Smeds

Dean Wesley Smith
 Randy Smith
 Catherine Smyth-McMullen
 Melinda M. Snodgrass
 Jack Speer
 Rodney Stansfield
 Allen M. Steele
 Edie Stern
 Rick Sternbach
 Milt Stevens
 Joseph Michael Straczynski
 Jonathan Strahan
 Edwin L. Strickland III
 John (Jr.) K. Strickland
 Diana P. Studebaker
 Geri Sullivan
 Dr. Isaac Szpindel
 Takayuki Tatsumi
 Bill Thomasson
 Amy Thomson
 Adam Tilghman
 Tadao Tomomatsu
 Suzanne Tompkins
 Andrew T Trembley
 Bjo Trimble
 Harry Turtledove
 Mary Turzillo
 M. Christine Valada, Esq.
 Gordon Van Gelder
 Mark L. Van Name
 Vernor Vinge
 Robert Vogel
 Mark von Schlegell
 John Vornholt
 Jeff Walker
 Michael J. Walsh
 Bill Warren
 Len Wein
 Dave Weingart
 Toni Weisskopf
 Gary Westfahl
 Ken Wharton
 Lee Whiteside
 Tom Whitmore
 Art Widner
 Sheila Williams
 Connie Willis
 Cordelia Willis
 Courtney Willis
 Mike Willmoth
 Robert Charles Wilson
 Marv Wolfman
 Eleanor Wood
 Frank Wu
 William F. Wu
 Ben Yalow
 Chris Young
 James Young
 Janine Ellen Young

KANSAS CITY IN 2009

A BID FOR THE 67TH

WORLD SCIENCE FICTION CONVENTION

LABOR DAY WEEKEND—SEPTEMBER 3-7, 2009

We're back, and ready to bring you a Worldcon with:



Phoenix Logo by Joe Myers

- ✈ *Great Facilities*
- ✈ *A Convenient Midwest Location*
- ✈ *Attractions for Everyone*
- ✈ *Hot and Cold Running Redheads*
- ✈ *The Best Barbecue in the Known Universe*

Come to Our Parties at L.A.con IV for Kansas City Barbecue, Music and much more!

Service Mark notice: "World Science Fiction Society," "WSFS," "World Science Fiction Convention," "NASFiC," "Hugo" and "WorldCon" are registered service marks of the World Science Fiction Society, an unincorporated literary society.

THE BENEFITS LISTED BELOW WILL BE RECEIVED IF YOU VOTE FOR SITE SELECTION IN 2007 AND WE WIN.

Presupport: \$20 US
 supporting membership
 1/2 credit for conversion

Friend of the Library: \$50 US
 attending membership
 listing in program book

Preoppose: \$25 US
 supporting membership
 1/2 credit for conversion

Patron: \$100 US
 attending membership
 listing in program book; a bid t-shirt & more

For Up to Date Information on All Aspects of the Bid, see our Website: www.midamericon.org

Questions? Comments? Just want to chat? Our email address is: masffc@kc.rr.com

Make checks (in U.S. funds) payable to Kansas City in 2009 and mail to:
 Kansas City 2009, P.O. Box 414175, Kansas City, MO 64141-4175

Childcare

A few quick notes about childcare. L.A.con IV is please to be able to offer childcare for those wishing a little while away from their little ones. We have contracted with KiddieCorp to provide an exciting space themed environment for them while away from mom and dad. KiddieCorp is a professional service with many years of experience. They will be on site through the entirety of the convention and will take advance reservations through their web site at: <https://www.kiddiecorp.com/laconivkids.htm>. L.A.con IV is pleased to be able to offer this service at a subsidized cost of \$12.00. Adults must be members of the convention to register their children.

The hours of service will be:

| | | |
|---------------------------|------------------|------------------------|
| Wednesday | August 23 | 9:30am-6:00pm |
| Thursday | August 24 | 9:30am-6:00pm |
| Friday | August 25 | 9:30am-midnight |
| (Masquerade Night) | | |
| Saturday | August 26 | 9:30am-midnight |
| (Hugo Night) | | |
| Sunday | August 27 | 9:30am-4:00pm |

Please note that there are a limited number of spaces and when they are full, KiddieCorp will be unable to take any more children until a space frees up. Payment will be made directly to KiddieCorp. Please also note that this service does NOT include meals. Light snacks may be provided but they will NOT be substantial enough to take the place of a meal. Please make sure that you schedule your time to include picking up your children for meals.

The following is a brief description of what awaits your children when they come to childcare.

Childcare: Space Explorer Camp

Five, Four, Three, Two, One, Blast off! It's time to go to Space Explorer Camp. We'll pitch our space dome tents and chairs on the 'moon's surface' and investigate our galaxies' stars, planets, and constellations. Let's discover what zero gravity feels like when we make our own pair of moon boots. The

masterpieces we create will include wishing stars, celestial windsocks, and paper spaceships. Before we reach the earth's atmosphere, we can play with our spectacular sports centers and make some intergalactic moon bubbles. We'll also have a chance to play astronaut ring toss, musical planets, and moon, moon, star (our version of duck, duck, goose). So let's buckle our seat belts, prepare for countdown, and blast off to Space Explorer Camp.

Brewster Rokit Contest Name That Rocket

When you walk into the center of the exhibit hall you will see a 10-foot high paper mache rocket erected in tribute by fans of Brewster Rokit, the hysterical space adventure comic strip created by Tim Rickard. Brewster Rokit is an unlikely captain. He's woefully ill-prepared to lead, and that's part of his charm. Orbiting the stars in the space station R.U. Sirius and taking shuttle trips by rocket, Brewster and his crew of misfits encounter a constantly challenging set of interplanetary anomalies, pushing the limits of space, time and humor.

Tim Rickard is an award-winning cartoonist, illustrator and graphic artist. Rickard has worked as a freelance artist and cartoonist for newspapers, books, magazines and Web sites. After writing a popular "Star Wars" parody, he was inspired to create a comic strip that combined the best elements of space adventure and humor. Tim's humorous illustrations have appeared in numerous popular publications, including Better Homes and Gardens and The Washington Post. The Brewster Rokit comic strip is syndicated by Tribune Media Services (www.comicspage.com/brewster/brewster.html).

Tim is very excited about the "Name the Rocket" contest at the convention. Fill out an entry form at the rocket to win a chance to earn a place in both science-fiction and comic history. The winning name will appear in the Brewster Rokit comic strip. Along with that a prize will be awarded to the winner. You can fill out an entry form next to the exhibit or email Tim Rickard at brewrokit@yahoo.com. The winner will be announced at the rocket on August 27th. You do not need to be present to win.

Anticipation

Montréal in 2009

T h e W o r l d c o n B i d



August 6-10, 2009

w w w . a n t i c i p a t i o n s f . c a

YES!

Montréal has the facilities:

The Palais des congrès (convention centre) is large enough to host the entire convention on two convenient floors connected by elevators, escalators and stairs. One floor has 198 820 sq.ft. of exhibit space and the other up to 65 meeting rooms totaling 131 700 sq.ft. giving a total rental space of 330 520 sq.ft. Everything is located right in the middle of downtown Montréal and a stone's throw away from Old Montréal.

The convention centre is directly connected to the Montréal Metro and the underground city giving you access to countless other restaurants, stores, and attractions.

YES!

You can get there from here:

Montréal is accessible by all the usual forms of transportation.

Montréal has a major airport with over 500 flights per day bringing over 25 000 passengers from all over the world.

Montréal connects by rail through New York City and through Detroit.

Montréal is on the Interstate. Well, practically: a mere 45-minute drive from the border, where interstate 87 ends and highway 15 starts. Same road, different name.

And once you've arrived, getting to the convention site is easy. Both the train and bus stations are connected directly to the metro and are a few stops away from the convention centre, while shuttle services are available from the airport to most major hotels.

YES!

You can buy great food here:

Not only do Montréal and Québec have their own unique cuisine, Montréal also has one of the widest varieties of restaurants in any city, from Afghan to Vietnamese, you can find it here.

There are over 300 restaurants of all kinds within 1 km (approx 0.6 miles) of the convention centre and over 800 within 2 km (approx 1.2 miles) of it.

Our committee:

Robbie Bourget, Brian Davis, Bruce Farr, Terry Fong, Eugene Heller, Peter Jarvis, John Mansfield, Linda Ross-Mansfield, MrShirt (Michael McConnell), Nicholas Shectman (Phi), Marie-Astrid Walling, René Walling

Contact us:

C.P. 505, Succursale NDG, Montréal, Québec, Canada H4A 3P8 – info@anticipationsf.ca

"Worldcon" is a service mark of the World Science Fiction Society

WSFS Business Meeting

Every member of Worldcon is a member of the World Science Fiction Society (WSFS) and Worldcon is the annual convention of the Society. WSFS has no “home office,” no Board of Directors, no shadowy Central Committee of Secret Master of Fandom governing it. WSFS is a direct democracy, governed through an annual Business Meeting held at each Worldcon. Every member of L.A.con IV can attend the annual Business Meeting of WSFS, propose changes to the WSFS Constitution (published in PR 3 and available on the L.A.con IV web site.), and debate and vote on those changes. This is where the rules for the Hugo Awards and the selection of future Worldcons are made. This year, there is one change to the Hugo Awards (splitting the Best Editor Hugo Award into two categories, short and long fiction) pending a final vote. If you’ve ever thought that there should be a rule about something to do with Worldcons, you should attend the Business Meeting and see how the “town meeting” of the Society works.

This year, the Business Meetings will be on Thursday, Friday, Saturday, and (if required) Sunday mornings of the convention, at 10 AM (location to be announced in the convention schedule). Business Meeting veterans please note that, because L.A.con IV runs Wednesday-Sunday, the Preliminary Business Meeting is 10 AM Thursday, and all deadlines apply accordingly. The deadline for submitting new business is two hours after the Opening Ceremonies (or 4 PM Wednesday, whichever is later). There are two ways to submit new business to the meeting, a hard way and an easy way. The hard way is to submit 200 identical copies (including an original signed by at least two members of L.A.con IV) to the Business Meeting (probably through the Convention Office; expect an announcement in an early issue of the at-convention newsletter for details). The easy way is to submit your proposal electronically to the Secretary of the Business meeting by e-mailing wsfs@laconiv.org; however, the Secretary must receive any electronic proposals at least a week before the convention.

As we get closer to the convention, check the L.A.con IV web site for updates to information about the Business Meeting and the draft agenda. If you have questions about the Business Meeting, e-mail wsfs@laconiv.org.

Transferring a Membership

To transfer a membership, all you need do is send a letter to the address below telling us that you wish to transfer your membership, your name, your address and to whom you wish to transfer it to. Please include the new person’s name and address and, if you know it, your membership number.

LACON IV
PO Box 8442
Van Nuys, CA 91409

Kaffeeklatsches

Kaffeeklatsches (alternately known as “literary teas” or “literary bheers” depending on the preferences of the host) are your chance to meet your favorite author. Check the program schedule to see who will be doing kaffeeklatsches at what time during the convention.

The sign-up for each kaffeeklatsch will be available at the Information desk 24 hours before the scheduled event. Based on past history, about one in four kaffeeklatsches will fill up, and about one in ten will fill up immediately as soon as the sign-up sheet becomes available at the Info desk, so if you’d like to attend one with a very popular author, be sure to sign up early! Comments or questions posted to laconiv.livejournal.com will reach informed parties.

Handicapped Services

Emails to most of the people who rented scooters at Noreascon IV. If you did not hear from us, and want a scooter please contact us at <mailto:handicap@laconiv.org> The date to have your information to us is June 30.

We have had one person volunteer to be an emergency part-time ASL interpreter. If you know of anyone who might be willing to help with the major events please contact me through handicapped services.

The pocket program in large print will be available. Again, please contact us if this is something you will be needing. We need your input to know how many copies to print.

Filking

Filk, the folk music (in the literal sense) of SF Fandom, will occur in the Anaheim Hilton during LACon IV. Filk has come a long way since the word was invented and adopted by Fandom in the early 1950's.

Filk has a dedicated suite of rooms in the Hilton for the duration of the con. There will be concerts, one-shots, theme circles, panel discussions on aspects of filking, e.g. filk history, running a filk circle, recording and publishing, techno-filk (use of computers), songwriting workshops, lots of open filking, and more. Lady Colleen Savitzky will be operating the Filk Lounge, a place to rest between gigs, tune your guitar, and recover from the travails of live performance.

Leslie Fish has consented to a performance of the infamous "Banned From Argo." Look for it in the schedule. This unique event will not be repeated!

Open CASTING CALL for new productions of "H.M.S. Trek-A-Star" by Filbert and Sullivan (Dorothy Jones Heydt and Karen Anderson), music by Arthur Sullivan, and for "The Kamikaze Moron" by Jolly Éclair (Jane Mailander). All parts are open, and a keyboard accompanist is needed.

Advance sign-ups for Insta-Bands will be accepted. Bands will be assembled on Wednesday for a live performance on Saturday, or on Thursday for a live performance on Sunday. All bands will have rehearsal times scheduled. Sign-ups will also be accepted at the convention.

Anyone able and willing to host/lead an instrument or songwriting workshop, a themed filk circle, or a drum (percussion) circle, please contact us and indicate the area of your expertise or thematic interest.

A limited number of concert slots may be open, but if we don't know you're coming, it's difficult to invite you. If you think you may deserve a concert slot, contact us. (But no promises that everyone will fit into the schedule.)

The more observant of you will have noticed a new name on the Committee list for Filking. Rick Weiss, who ran the filk track at LACon III in 1996, has come in to substitute for Lee Gold through this critical pre-convention time. Lee has had to step aside due to health reasons. She is expected to attend LACon IV, although the extent of her participation and leadership role will depend on her state of recovery.

Just because you're a Space Cadet does not mean you safe from the...

ALIEN ABDUCTION BLOOD DRIVE



PREPARE TO BE PROBED

Hosted by www.earthdaughterarts.com

Aliens have invaded our solar system. And they have come to probe your veins and abduct your blood! Cadets are warned to use extreme caution when exploring the Marriott Hotel on Friday, August 25 and Saturday, August 26. Our galactic intelligence indicates that Aliens, disguised as American Red Cross nurses, will be scanning for potential abductees between the hours of 11:00 a.m. and 5:00 p.m.

Do not be taken in by their promise of cookies and juice after the "procedure", nor by the raffle for a \$100.00 American Express gift card. These aliens will not release you until they have drained you of a unit of your blood – and who knows what they will do with your DNA after that!

If you are abducted, it is suggested that you cooperate with the aliens until rescue forces can reach you. You may find the following phrases useful:

"Utee yor nix?" – *Do you know my Uncle Martin?*

"Nooknook utae nana!" – *Just wait 'till I tell my big brother Kal El about this!*

"Barhu noma nik robu?" – *May I phone home?*

"Oooh, deka ba ruhte?" – *Oooh, are those oatmeal?*

ART SHOW

The L.A.con IV Art Show will be centrally located in Hall A of the convention center, with the dealers' room, exhibits, etc. Artwork will be displayed on pegboard panels, tables, print shop and an artist alley.

Special exhibits in the art show will include our Artist Guest of Honor James Gurney, artists nominated for the 2006 Hugo awards, artwork nominated for the Chesley art awards presented by ASFA, fanzine art organized by John Hertz, Illustrators of the Future, Student Contest artwork, artwork by our friends from Japan, items for the charity auction to benefit ASFA, and an anniversary display of jewelry by Laurie Edison.

We have decided to allow previously-purchased art to be entered for resale by the owner. The entry rules, panel fees, and sales commission are the same as for an artist, except that an additional 5% of sales on any individual piece sold for over \$1,000 will be sent to the Arts Council to comply with California law. To take advantage of the resale program, please use the "agent" area of the reservation form, and write "resale" in the "artist" area.

Please remember that L.A.con IV will be held from Wednesday to Sunday. Artists will need to check in on Wednesday. The art show will open to our members on late Wednesday afternoon. Artwork will be sold by a combination of written bidding and voice auction. Potential buyers should remember to register with the art show staff before bidding. The close of written bidding and the voice auction will be on Saturday. Buyers will be able to pick-up and pay for their artwork late Saturday afternoon or on Sunday morning.

We've gotten a good response to our initial announcements, but we still have room left in the art show. If you haven't sent in your reservation form yet, the deadline is June 30. The complete rules for artists and a reservation form are available on the LACon IV website. You can contact us via email to artshow@laconiv.org.

Calling All Darkover Fans

Chieri Council invites you to join us at our final meeting, to be held at the 2006 worldcon. This meeting will be a celebration of the Darkover Tradition and salute to the past, remembering those who have left us and an opportunity to renew or make new friendships among those of us left behind. Diana L. Paxson will lead a ceremony to formally disband the Council. Our archives will be presented to the Worldcon Fan Archivists.

Art Show Schedule

| | |
|---------------------|---|
| Tuesday, Aug. 22 | |
| 10:00 AM to 8:00 PM | Set-up of hangings |
| Wednesday, Aug. 23 | |
| 10:00 AM to 6:00 PM | Artist Check-in |
| 7:00 PM to 10:00 PM | Open to Convention Members |
| Thursday, Aug. 24 | |
| 10:00AM to 8:00PM | Open to Convention Members Artist Check-In with permission |
| Friday, Aug. 25 | |
| 10:00 AM to 8:00 PM | Open to Convention Members |
| Saturday, Aug. 26 | |
| 10:00 AM to 2:00 PM | Open to Convention Members |
| 2:00 PM to 5:00 PM | Closeout and set-up for sales |
| 4:00 PM to 7:00 PM | Voice Auction |
| 5:00 PM to 7:30 PM | Pick-up and Pay; Print Shop open |
| Sunday, Aug. 27 | |
| 10:00 AM to 2:00 PM | Pick-up and Pay; Print Shop open Artist Check-out |
| 2:00PM to 6PM | Tear-down of hangings |

Book Exhibit

As we did at LACon III, LACon IV will be sponsoring a book exhibit and raffle to benefit Reading is Fundamental (RIF) and the Los Angeles Public Library (LAPL). Books, magazine subscriptions, games, and other SF and Science-related materials will be on display during the convention. Raffle tickets will be sold for packets created from the materials on display, with the drawing held as a program item on Sunday (you must be present to win, as packet choice occurs immediately after the drawing). Each packet is likely to be worth several hundred dollars, so the raffle could be the best investment you make at the con - and you help RIF and the LAPL in the process.

Tablesetting Contest

YOU can help show that Space Cadets have grace under pressure (no matter how many atmospheres of pressure). The Space Academy Tablesetting Contest can show off your talents: just set a table for any circumstance in which Academy members may find themselves called upon to entertain: alien guests, unusual circumstances (free fall, high gravity, etc.). See the write-up in the Program Division at the laconiv.org site, and if you're interested, contact Fuzzy Niven through the link there. If you don't have internet access, you can get information by writing to the L.A.con address.

The Masquerade: Friday Evening, 8:00 PM

Complete information on the largest and most elaborate event of the convention was included in Progress Report 3, and is also found on the L.A.con IV website, but here is a brief summary of the details, plus the latest news.

We are pleased to announce that our Masquerade Master of Ceremonies will be the highly entertaining writer, artist, and two-time Hugo Award winner Phil Foglio, of Studio Foglio. Phil has M.C.'d many masquerades, but this will be his first Worldcon show. As he is a special guest at two other large conventions this summer, we are very appreciative of him donating his time and talents for our event.

We are also very pleased to announce that our halftime entertainment will be the Lux Theater's presentation of "Lux After Dark". This talented group has performed at other conventions to much applause and rave reviews, and we are fortunate to have them bring their creativity, costumes, and singing and dancing talent to our stage. (www.luxtheater.com)

In addition to the Worldcon trophies presented in Master, Journeyman, Novice, and Junior divisions, and show ribbons bestowed in various categories, the following awards are being generously donated for the show:

% **Nippon 2007**, next year's Worldcon in Yokohama, Japan, is providing a special prize at L.A.con IV. The Best In Show winner will receive a beautiful Japanese wedding kimono (uchikake), presented by a representative of the Nippon 2007 committee.

% **Lucasfilm Ltd.** will present to the best *Star Wars* entry in the Masquerade a special award of their own. The costume or costumes deemed the best recreation from the *Star Wars* galaxy will receive a very special limited-edition collectible from the Lucas Licensing Archives.

% **Anime:** There will be a \$50 cash prize presented to the best anime entry, donated by a member of the L.A.con IV committee who wishes their identity to remain a shadowy mystery at this time.

While awards may be a feature of the show, the point of the event is to have fun, and if you have a costume you've created, you are invited to take a turn on the stage and share your work with the largest audience at

the convention. Reserving a contestant spot now is strongly encouraged, but you may also sign-up at the convention itself until our maximum number of entries is reached. **Deadline for entries is 10:00 AM on the Friday of the show.** The Masquerade will be in the Convention Center Arena, and the stage dimensions will be 36' wide by 26' deep by 48" high, and will include theater-style lighting and spotlights.

Due to contestant requests, we have made a change in one of the rules: Children as young as age 3 are now allowed in the show, but only if a parent is with them at ALL times. No children under age 8 are allowed on stage by themselves. Any child under age 8 **MUST** be a part of an adult entry. This is a safety issue, as the elevated stage and the backstage areas are not especially safe places for the small of stature.

If you are just planning on being in the audience, all you need to do is show up with your member badge. The Arena has plenty of seating, but expect that there will be a line forming well before the doors open. There will be reserved sections for the disabled and for special guests of the convention, and for Press. Disabled persons should make arrangements through Handicapped Services, and there will be a signer for the hearing-impaired. Photographers interested in reserving a spot in the Masquerade Photo Area, where the contestants will pose after their stage appearance, should write to the show director beforehand, as spaces will be limited. No flash photography is allowed of the show itself. Other inquiries may be made at the Masquerade Desk at the convention.

For complete information, rules, diagrams, and an advance entry form, visit the www.laconiv.org website. If you lack Internet access, you may also write to the Masquerade Director in care of the L.A.con mailing address, and the information will be mailed to you. He can also be reached via e-mail at: masquerade@laconiv.org

Whether you have lots of experience with convention costuming, or are new to it, whether you create recreations from film, TV, anime, comic books, fantasy art, or completely original designs from your imagination, whether you make heroes, monsters, robots, fairies, or things that defy description, you are welcome in the show. Our very experienced show crew is dedicated to you having a great time!

ARCHON 31

9th NASFiC

August 2-5, 2007

Currently
confirmed Guests of
Honor:

Featured Guest
Barbara Hambly

Artist
Darrell K. Sweet

Gaming
James Ernest
(Cheapass Games)

Costuming
Elizabeth Covey

Media
Mira Furlan

Fan
**Nancy "Cleo"
Hathaway**

Toastmaster
Roger Tener

Masquerade MC
Vic Milán



For information, write to

Archon 31/2007 NASFiC, P.O. Box 8387, St. Louis, MO 63132-8387
nasfic_info@archonstl.org <http://www.archonstl.org/31/>

Archon 31– The 9th Occasional NASFiC!!! 2-5 August 2007

Another Experiment in Terror!! (For the Committee, anyway.)

The Board of Directors of Saint Louis Science Fiction, Limited is proud to announce that Archon has won the right to host the 2007 North American Science Fiction Interim Convention (NASFiC). NASFiCs are held any time the World Science Fiction Convention (Worldcon) is held outside the North American continent and in 2007 it will be in Yokohama, Japan. This is the first Japanese Worldcon ever, so it is very difficult to determine just exactly how many people will be attending Archon that year, but regardless, now is the time to get your membership!

Full Attending Adult memberships are currently \$60, Young Adults (11-16) are \$45 and Children (6-10) are \$35 (prices good through at least 3/31/06). Young Adult and Children's prices are for the age at the time of the con. Supporting (non-attending) memberships are \$35. Single day memberships will be announced at a later date. If you pre-supported the bid (gave us money during the bidding process) and/or voted, the attending membership prices will be adjusted accordingly (see the Archon website [www.archonstl.org/31/] for all the gory details). We're taking memberships via snail-mail and web registration. **MasterCard, Visa, Diners Club, & American Express accepted.** (Did I mention you should get your membership today?)

And what do you get for all this money that you wouldn't get at a normal Archon? Stick with us, kid, we'll show you! We plan to have all your favorite things plus stuff that even we haven't thought of, yet! So hold onto your propeller beanies – we plan to show you the best time possible!

We'll be holding the con in our favorite place – The Gateway Center and Holiday Inn in Collinsville, IL, plus any additional space we can scrounge up to make sure we have enough room for everyone and everything we're planning.

We are also excited to announce our currently confirmed Guests of Honor – GoH, Barbara Hambly; Artist GoH, Darrell K. Sweet; Gaming GoH James Ernest; Costuming GoH Elizabeth Covey; Fan GoH, Nancy "Cleo" Hathaway; Media GoH, Mira Furlan; Toastmaster, Roger Tener, and Masquerade MC, Vic Milán. The Filk GoH will be announced as soon as possible.

So, now that you know about the NASFiC, why haven't you already gotten your membership?

Trust us, we know what we're doing!

World Science Fiction Society (WSFS) – <http://www.wsfs.org/>
WSFS Constitution, Bylaws, Rules, etc. – <http://www.wsfs.org/bm/rules.html>

"World Science Fiction Society", "WSFS", "World Science Fiction Convention", "Worldcon", and "NASFiC" are service marks of the World Science Fiction Society, an unincorporated literary society. You can contact the WSFS Mark Protection Committee at mpe@wsfs.org.

**LACON IV
C/O SCIFI, Inc.
PO Box 8442
Van Nuys, CA 91409
USA**

**FIRST-CLASS
MAIL
US POSTAGE
PAID
PERMIT 843
VAN NUYS, CA**